

MCCC2 Antibody (Center)
Affinity Purified Rabbit Polyclonal Antibody (Pab)
Catalog # AP6924c

Specification

MCCC2 Antibody (Center) - Product Information

Application	WB, IHC-P, FC,E
Primary Accession	O9HCC0
Reactivity	Human, Rat
Host	Rabbit
Clonality	Polyclonal
Isotype	Rabbit IgG
Calculated MW	61333
Antigen Region	163-189

MCCC2 Antibody (Center) - Additional Information

Gene ID 64087

Other Names

Methylcrotonoyl-CoA carboxylase beta chain, mitochondrial, MCCase subunit beta, 3-methylcrotonyl-CoA carboxylase 2, 3-methylcrotonyl-CoA carboxylase non-biotin-containing subunit, 3-methylcrotonyl-CoA:carbon dioxide ligase subunit beta, MCCC2, MCCB

Target/Specificity

This MCCC2 antibody is generated from rabbits immunized with a KLH conjugated synthetic peptide between 163-189 amino acids from the Central region of human MCCC2.

Dilution

WB~~1:1000
IHC-P~~1:10~50
FC~~1:10~50
E~~Use at an assay dependent concentration.

Format

Purified polyclonal antibody supplied in PBS with 0.09% (W/V) sodium azide. This antibody is purified through a protein A column, followed by peptide affinity purification.

Storage

Maintain refrigerated at 2-8°C for up to 2 weeks. For long term storage store at -20°C in small aliquots to prevent freeze-thaw cycles.

Precautions

MCCC2 Antibody (Center) is for research use only and not for use in diagnostic or therapeutic procedures.

MCCC2 Antibody (Center) - Protein Information

Name MCCC2

Synonyms MCCB

Function Carboxyltransferase subunit of the 3-methylcrotonyl-CoA carboxylase, an enzyme that catalyzes the conversion of 3- methylcrotonyl-CoA to 3-methylglutaconyl-CoA, a critical step for leucine and isovaleric acid catabolism.

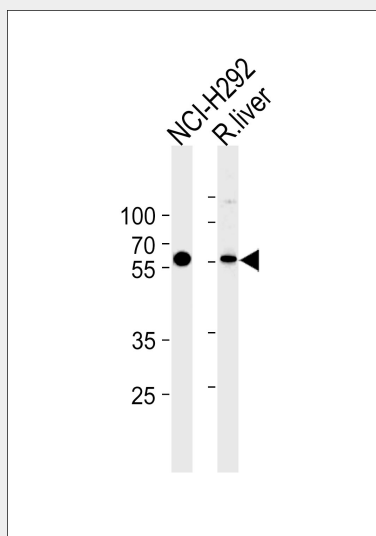
Cellular Location
Mitochondrion matrix

MCCC2 Antibody (Center) - Protocols

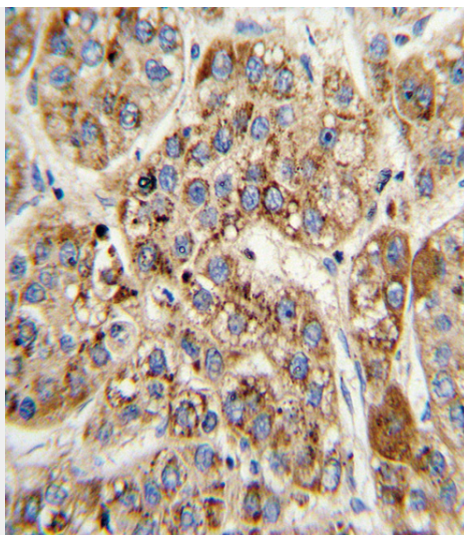
Provided below are standard protocols that you may find useful for product applications.

- [Western Blot](#)
- [Blocking Peptides](#)
- [Dot Blot](#)
- [Immunohistochemistry](#)
- [Immunofluorescence](#)
- [Immunoprecipitation](#)
- [Flow Cytometry](#)
- [Cell Culture](#)

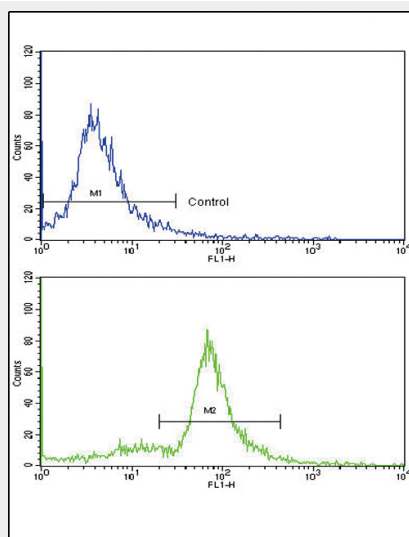
MCCC2 Antibody (Center) - Images



MCCC2 Antibody (Center) (Cat. #AP6924c) western blot analysis in NCI-H292 cell line and rat liver tissue lysates (35ug/lane). This demonstrates the MCCC2 antibody detected the MCCC2 protein (arrow).



Formalin-fixed and paraffin-embedded human hepatocarcinoma with MCCC2 Antibody (Center), which was peroxidase-conjugated to the secondary antibody, followed by DAB staining. This data demonstrates the use of this antibody for immunohistochemistry; clinical relevance has not been evaluated.



Flow cytometric analysis of ATDC5 cells using MCCC2 Antibody (Center) (bottom histogram) compared to a negative control cell (top histogram). FITC-conjugated goat-anti-rabbit secondary antibodies were used for the analysis.

MCCC2 Antibody (Center) - Background

MCCC2 is the small subunit of 3-methylcrotonyl-CoA carboxylase. This enzyme functions as a heterodimer and catalyzes the carboxylation of 3-methylcrotonyl-CoA to form 3-methylglutaconyl-CoA.

MCCC2 Antibody (Center) - References

Uematsu,M., et.al., J. Hum. Genet. 52 (12), 1040-1043 (2007)