

CPM Polyclonal Antibody
Catalog # AP69271**Specification**

CPM Polyclonal Antibody - Product Information

Application	WB
Primary Accession	P14384
Reactivity	Human
Host	Rabbit
Clonality	Polyclonal

CPM Polyclonal Antibody - Additional Information**Gene ID** 1368**Other Names**

CPM; Carboxypeptidase M; CPM

Dilution

WB~~Western Blot: 1/500 - 1/2000. ELISA: 1/40000. Not yet tested in other applications.

Format

Liquid in PBS containing 50% glycerol, 0.5% BSA and 0.09% (W/V) sodium azide.

Storage Conditions

-20°C

CPM Polyclonal Antibody - Protein Information**Name** CPM**Function**

Specifically removes C-terminal basic residues (Arg or Lys) from peptides and proteins. It is believed to play important roles in the control of peptide hormone and growth factor activity at the cell surface, and in the membrane-localized degradation of extracellular proteins.

Cellular Location

Cell membrane; Lipid-anchor, GPI-anchor

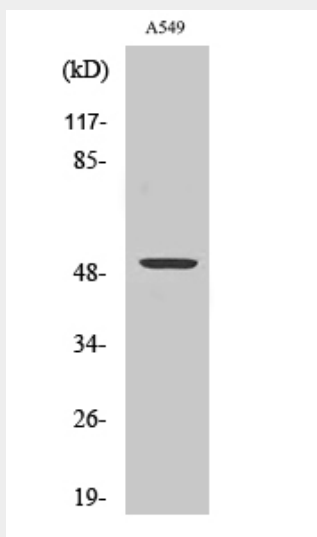
CPM Polyclonal Antibody - Protocols

Provided below are standard protocols that you may find useful for product applications.

- [Western Blot](#)
- [Blocking Peptides](#)
- [Dot Blot](#)

- [Immunohistochemistry](#)
- [Immunofluorescence](#)
- [Immunoprecipitation](#)
- [Flow Cytometry](#)
- [Cell Culture](#)

CPM Polyclonal Antibody - Images



CPM Polyclonal Antibody - Background

Specifically removes C-terminal basic residues (Arg or Lys) from peptides and proteins. It is believed to play important roles in the control of peptide hormone and growth factor activity at the cell surface, and in the membrane-localized degradation of extracellular proteins.