

CREM Polyclonal Antibody
Catalog # AP69289**Specification**

CREM Polyclonal Antibody - Product Information

Application	WB, IHC-P
Primary Accession	Q03060
Reactivity	Human, Mouse, Rat
Host	Rabbit
Clonality	Polyclonal

CREM Polyclonal Antibody - Additional Information**Gene ID** 1390**Other Names**

CREM; cAMP-responsive element modulator; Inducible cAMP early repressor; ICER

Dilution

WB~~Western Blot: 1/500 - 1/2000. Immunohistochemistry: 1/100 - 1/300. ELISA: 1/20000. Not yet tested in other applications.

IHC-P~~N/A

Format

Liquid in PBS containing 50% glycerol, 0.5% BSA and 0.09% (W/V) sodium azide.

Storage Conditions

-20°C

CREM Polyclonal Antibody - Protein Information**Name** CREM ([HGNC:2352](#))**Function**

Transcriptional regulator that binds the cAMP response element (CRE), a sequence present in many viral and cellular promoters. Isoforms are either transcriptional activators or repressors. Plays a role in spermatogenesis and is involved in spermatid maturation (PubMed:10373550).

Cellular Location

Nucleus.

Tissue Location

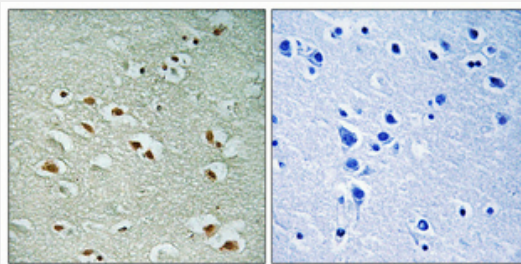
Expressed in testes (round spermatids) (at protein level). Isoform 14 is the major activator form in testes

CREM Polyclonal Antibody - Protocols

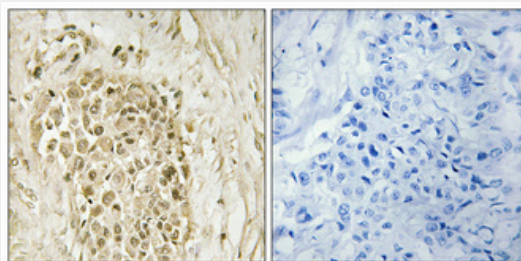
Provided below are standard protocols that you may find useful for product applications.

- [Western Blot](#)
- [Blocking Peptides](#)
- [Dot Blot](#)
- [Immunohistochemistry](#)
- [Immunofluorescence](#)
- [Immunoprecipitation](#)
- [Flow Cytometry](#)
- [Cell Culture](#)

CREM Polyclonal Antibody - Images



Immunohistochemical analysis of paraffin-embedded Human brain. Antibody was diluted at 1:100(4°,overnight). High-pressure and temperature Tris-EDTA,pH8.0 was used for antigen retrieval. Negative contrl (right) obtaned from antibody was pre-absorbed by immunogen peptide.



Immunohistochemical analysis of paraffin-embedded Human breast cancer. Antibody was diluted at 1:100(4°,overnight). High-pressure and temperature Tris-EDTA,pH8.0 was used for antigen retrieval. Negative contrl (right) obtaned from antibody was pre-absorbed by immunogen peptide.

CREM Polyclonal Antibody - Background

Transcriptional regulator that binds the cAMP response element (CRE), a sequence present in many viral and cellular promoters. Isoforms are either transcriptional activators or repressors. Plays a role in spermatogenesis and is involved in spermatid maturation (PubMed:10373550).