

**Crk II Polyclonal Antibody**  
**Catalog # AP69295****Specification**

---

**Crk II Polyclonal Antibody - Product Information**

Application	WB, IHC-P, IF
Primary Accession	<a href="#">P46108</a>
Reactivity	Human, Mouse, Rat, Monkey
Host	Rabbit
Clonality	Polyclonal

**Crk II Polyclonal Antibody - Additional Information****Gene ID** 1398**Other Names**

CRK; Adapter molecule crk; Proto-oncogene c-Crk; p38

**Dilution**

WB~~Western Blot: 1/500 - 1/2000. Immunohistochemistry: 1/100 - 1/300. Immunofluorescence: 1/200 - 1/1000. ELISA: 1/5000. Not yet tested in other applications.

IHC-P~~N/A

IF~~1:50~200

**Format**

Liquid in PBS containing 50% glycerol, 0.5% BSA and 0.09% (W/V) sodium azide.

**Storage Conditions**

-20°C

**Crk II Polyclonal Antibody - Protein Information****Name** CRK**Function**

Involved in cell branching and adhesion mediated by BCAR1- CRK-RAPGEF1 signaling and activation of RAP1.

**Cellular Location**

Cytoplasm. Cell membrane. Note=Translocated to the plasma membrane upon cell adhesion.

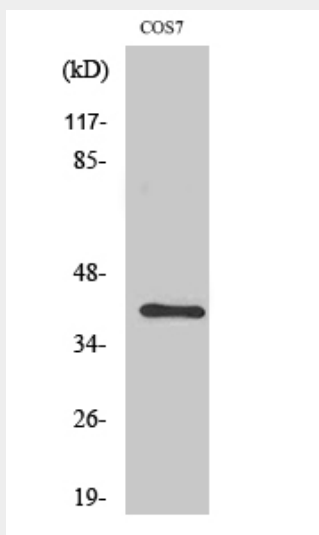
**Crk II Polyclonal Antibody - Protocols**

Provided below are standard protocols that you may find useful for product applications.

- [Western Blot](#)

- [Blocking Peptides](#)
- [Dot Blot](#)
- [Immunohistochemistry](#)
- [Immunofluorescence](#)
- [Immunoprecipitation](#)
- [Flow Cytometry](#)
- [Cell Culture](#)

### Crk II Polyclonal Antibody - Images



Western Blot analysis of various cells using Crk II Polyclonal Antibody

### Crk II Polyclonal Antibody - Background

Isoform Crk-II: Regulates cell adhesion, spreading and migration. Mediates attachment-induced MAPK8 activation, membrane ruffling and cell motility in a Rac-dependent manner. Involved in phagocytosis of apoptotic cells and cell motility via its interaction with DOCK1 and DOCK4. May regulate the EFNA5-EPHA3 signaling.