

**PAX6 Antibody (Center)**  
**Affinity Purified Rabbit Polyclonal Antibody (Pab)**  
**Catalog # AP6929c**

**Specification**

---

**PAX6 Antibody (Center) - Product Information**

Application	WB, FC, IF, IHC-P,E
Primary Accession	<a href="#">P26367</a>
Other Accession	<a href="#">P55864</a> , <a href="#">P63016</a> , <a href="#">P63015</a> , <a href="#">Q1LZF1</a>
Reactivity	Human
Predicted	Bovine, Mouse, Rat, Xenopus
Host	Rabbit
Clonality	Polyclonal
Isotype	Rabbit IgG
Antigen Region	183-210

**PAX6 Antibody (Center) - Additional Information**

**Gene ID** 5080

**Other Names**

Paired box protein Pax-6, Aniridia type II protein, Oculorhombin, PAX6, AN2

**Target/Specificity**

This PAX6 antibody is generated from rabbits immunized with a KLH conjugated synthetic peptide between 183-210 amino acids from the Central region of human PAX6.

**Dilution**

WB~~1:1000  
FC~~1:10~50  
IF~~1:10~50  
IHC-P~~1:10~50  
E~~Use at an assay dependent concentration.

**Format**

Purified polyclonal antibody supplied in PBS with 0.09% (W/V) sodium azide. This antibody is purified through a protein A column, followed by peptide affinity purification.

**Storage**

Maintain refrigerated at 2-8°C for up to 2 weeks. For long term storage store at -20°C in small aliquots to prevent freeze-thaw cycles.

**Precautions**

PAX6 Antibody (Center) is for research use only and not for use in diagnostic or therapeutic procedures.

**PAX6 Antibody (Center) - Protein Information**

**Name** PAX6

**Synonyms** AN2

**Function** Transcription factor with important functions in the development of the eye, nose, central nervous system and pancreas. Required for the differentiation of pancreatic islet alpha cells (By similarity). Competes with PAX4 in binding to a common element in the glucagon, insulin and somatostatin promoters. Regulates specification of the ventral neuron subtypes by establishing the correct progenitor domains (By similarity). Acts as a transcriptional repressor of NFATC1- mediated gene expression (By similarity).

**Cellular Location**

Nucleus {ECO:0000250|UniProtKB:P63015}. [Isoform 5a]: Nucleus {ECO:0000250|UniProtKB:P63016}

**Tissue Location**

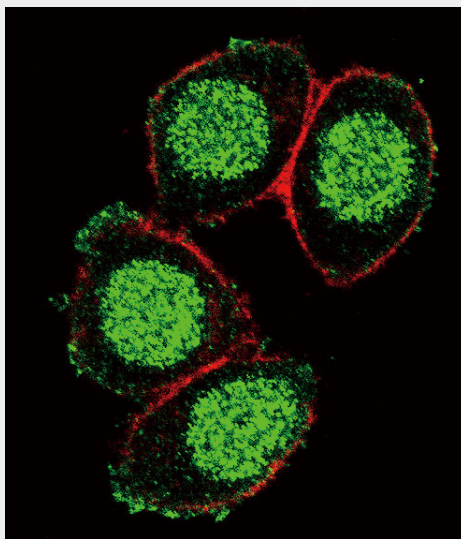
[Isoform 1]: Expressed in lymphoblasts.

**PAX6 Antibody (Center) - Protocols**

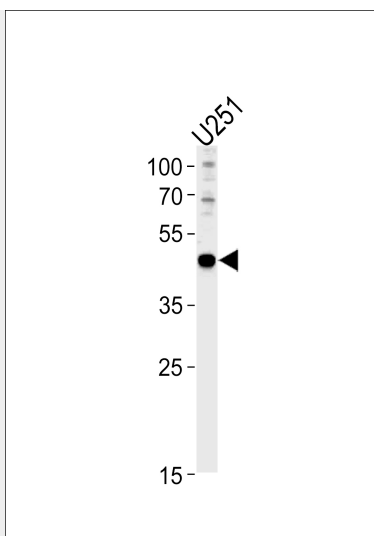
Provided below are standard protocols that you may find useful for product applications.

- [Western Blot](#)
- [Blocking Peptides](#)
- [Dot Blot](#)
- [Immunohistochemistry](#)
- [Immunofluorescence](#)
- [Immunoprecipitation](#)
- [Flow Cytometry](#)
- [Cell Culture](#)

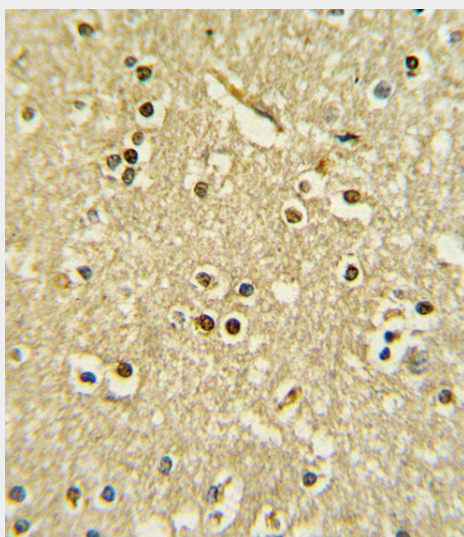
**PAX6 Antibody (Center) - Images**



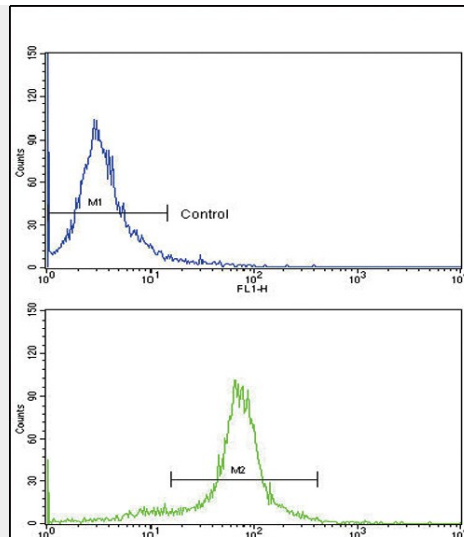
Confocal immunofluorescent analysis of PAX6 Antibody (Center)(Cat#AP6929c) with HeLa cell followed by Alexa Fluor 488-conjugated goat anti-rabbit IgG (green). Actin filaments have been labeled with Alexa Fluor 555 phalloidin (red).



PAX6 Antibody (Center) (Cat.# AP6929c) western blot analysis in U251 cell line lysates (35ug/lane). This demonstrates the PAX6 antibody detected the PAX6 protein (arrow).



Formalin-fixed and paraffin-embedded human brain tissue with PAX6 Antibody (Center), which was peroxidase-conjugated to the secondary antibody, followed by DAB staining. This data demonstrates the use of this antibody for immunohistochemistry; clinical relevance has not been evaluated.



Flow cytometric analysis of hela cells using PAX6 Antibody (Center)(bottom histogram) compared to a negative control cell (top histogram). FITC-conjugated goat-anti-rabbit secondary antibodies were used for the analysis.

#### **PAX6 Antibody (Center) - Background**

PAX6 is paired box gene 6, one of many human homologs of the *Drosophila melanogaster* gene *prd*. In addition to the hallmark feature of this gene family, a conserved paired box domain, the encoded protein also contains a homeo box domain. Both domains are known to bind DNA, and function as regulators of gene transcription.

#### **PAX6 Antibody (Center) - References**

Firsova, N.V., et.al., Dokl. Biol. Sci. 426, 264-266 (2009)