

TPH1 Antibody (N-term)
Affinity Purified Rabbit Polyclonal Antibody (Pab)
Catalog # AP6930a

Specification

TPH1 Antibody (N-term) - Product Information

Application	IF, FC, IHC-P, WB,E
Primary Accession	P17752
Other Accession	O92142 , P09810 , P17290 , P70080
Reactivity	Human
Predicted	Chicken, Rabbit, Rat, Xenopus
Host	Rabbit
Clonality	Polyclonal
Isotype	Rabbit IgG
Calculated MW	50985
Antigen Region	35-62

TPH1 Antibody (N-term) - Additional Information

Gene ID 7166

Other Names

Tryptophan 5-hydroxylase 1, Tryptophan 5-monooxygenase 1, TPH1, TPH, TPRH, TRPH

Target/Specificity

This TPH1 antibody is generated from rabbits immunized with a KLH conjugated synthetic peptide between 35-62 amino acids from the N-terminal region of human TPH1.

Dilution

IF~~1:10~50
FC~~1:10~50
IHC-P~~1:50~100
WB~~1:500
E~~Use at an assay dependent concentration.

Format

Purified polyclonal antibody supplied in PBS with 0.09% (W/V) sodium azide. This antibody is purified through a protein A column, followed by peptide affinity purification.

Storage

Maintain refrigerated at 2-8°C for up to 2 weeks. For long term storage store at -20°C in small aliquots to prevent freeze-thaw cycles.

Precautions

TPH1 Antibody (N-term) is for research use only and not for use in diagnostic or therapeutic procedures.

TPH1 Antibody (N-term) - Protein Information

Name TPH1

Synonyms TPH, TPRH, TRPH

Function Oxidizes L-tryptophan to 5-hydroxy-L-tryptophan in the rate- determining step of serotonin biosynthesis.

Tissue Location

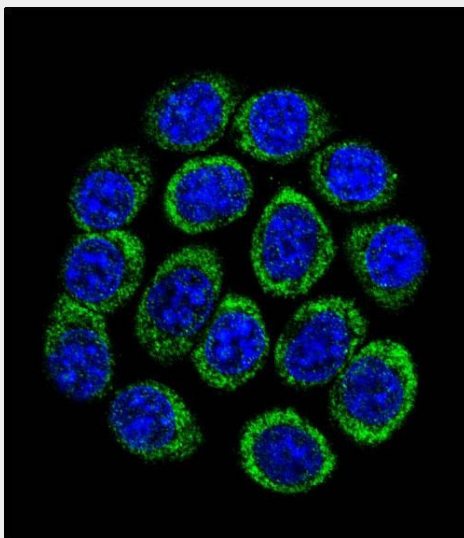
[Isoform 2]: Seems to be less widely expressed than isoform 1.

TPH1 Antibody (N-term) - Protocols

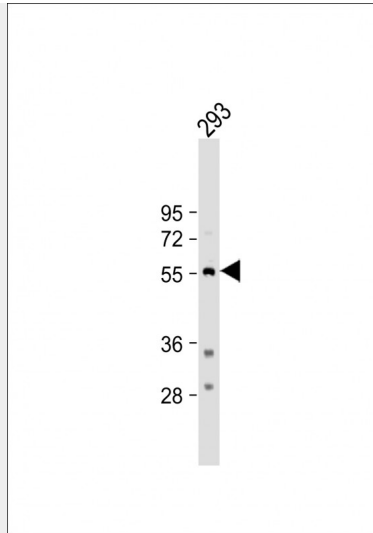
Provided below are standard protocols that you may find useful for product applications.

- [Western Blot](#)
- [Blocking Peptides](#)
- [Dot Blot](#)
- [Immunohistochemistry](#)
- [Immunofluorescence](#)
- [Immunoprecipitation](#)
- [Flow Cytometry](#)
- [Cell Culture](#)

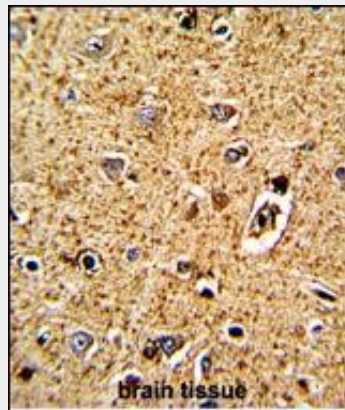
TPH1 Antibody (N-term) - Images



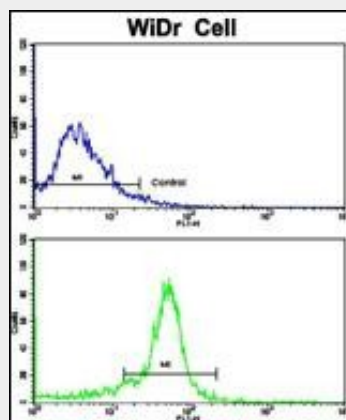
Confocal immunofluorescent analysis of TPH1 Antibody (N-term)(Cat#AP6930a) with 293 cell followed by Alexa Fluor 488-conjugated goat anti-rabbit IgG (green). DAPI was used to stain the cell nuclear (blue).



Anti-TPH1 Antibody (N-term) at 1:500 dilution + 293 whole cell lysate Lysates/proteins at 20 μ g per lane. Secondary Goat Anti-Rabbit IgG, (H+L), Peroxidase conjugated at 1/10000 dilution. Predicted band size : 51 kDa Blocking/Dilution buffer: 5% NFDM/TBST.



Formalin-fixed and paraffin-embedded human brain tissue with TPH1 Antibody (N-term), which was peroxidase-conjugated to the secondary antibody, followed by DAB staining. This data demonstrates the use of this antibody for immunohistochemistry; clinical relevance has not been evaluated.



Flow cytometric analysis of widr cells using TPH1 Antibody (N-term)(bottom histogram) compared to a negative control cell (top histogram). FITC-conjugated goat-anti-rabbit secondary antibodies were used for the analysis.

TPH1 Antibody (N-term) - Background

TPH1 is a member of the aromatic amino acid hydroxylase family. This protein catalyzes the first and rate limiting step in the biosynthesis of serotonin, an important hormone and neurotransmitter.

TPH1 Antibody (N-term) - References

Johansson, T.A., et.al., BMC Cancer 9, 321 (2009)
Kuhn, D.M., et.al., J. Neurochem. 68 (5), 2220-2223 (1997)