

CSP Polyclonal Antibody
Catalog # AP69318**Specification**

CSP Polyclonal Antibody - Product Information

Application	WB
Primary Accession	Q9H3Z4
Reactivity	Human, Mouse, Rat
Host	Rabbit
Clonality	Polyclonal

CSP Polyclonal Antibody - Additional Information**Gene ID** 80331**Other Names**

DNAJC5; CSP; DnaJ homolog subfamily C member 5; Cysteine string protein; CSP

Dilution

WB~~Western Blot: 1/500 - 1/2000. ELISA: 1/10000. Not yet tested in other applications.

Format

Liquid in PBS containing 50% glycerol, 0.5% BSA and 0.09% (W/V) sodium azide.

Storage Conditions

-20°C

CSP Polyclonal Antibody - Protein Information**Name** DNAJC5 ([HGNC:16235](#))**Function**

Acts as a general chaperone in regulated exocytosis (By similarity). Acts as a co-chaperone for the SNARE protein SNAP-25 (By similarity). Involved in the calcium-mediated control of a late stage of exocytosis (By similarity). May have an important role in presynaptic function. May be involved in calcium-dependent neurotransmitter release at nerve endings (By similarity).

Cellular Location

Cytoplasm, cytosol {ECO:0000250|UniProtKB:Q29455}. Membrane {ECO:0000250|UniProtKB:Q29455}; Lipid-anchor {ECO:0000250|UniProtKB:Q29455}. Cytoplasmic vesicle, secretory vesicle, chromaffin granule membrane {ECO:0000250|UniProtKB:Q29455}. Melanosome. Cell membrane. Note=The association with membranes is regulated by palmitoylation (By similarity). Identified by mass spectrometry in melanosome fractions from stage I to stage IV (PubMed:17081065). {ECO:0000250|UniProtKB:Q29455, ECO:0000269|PubMed:17081065}

Tissue Location

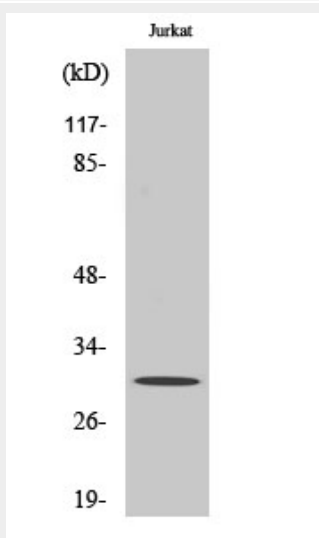
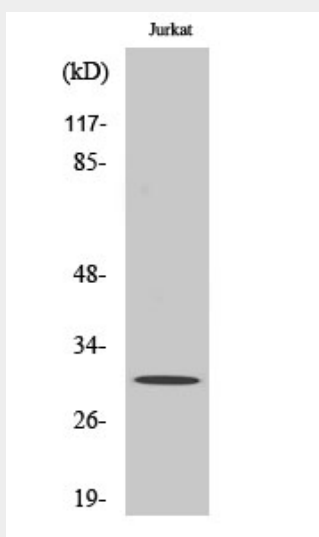
Expressed in pancreas, kidney, skeletal muscle, liver, lung, placenta, brain and heart.

CSP Polyclonal Antibody - Protocols

Provided below are standard protocols that you may find useful for product applications.

- [Western Blot](#)
- [Blocking Peptides](#)
- [Dot Blot](#)
- [Immunohistochemistry](#)
- [Immunofluorescence](#)
- [Immunoprecipitation](#)
- [Flow Cytometry](#)
- [Cell Culture](#)

CSP Polyclonal Antibody - Images



CSP Polyclonal Antibody - Background

Acts as a general chaperone in regulated exocytosis (By similarity). Acts as a co-chaperone for the SNARE protein SNAP-25 (By similarity). Involved in the calcium-mediated control of a late stage of exocytosis (By similarity). May have an important role in presynaptic function. May be involved in calcium-dependent neurotransmitter release at nerve endings (By similarity).