

**CstF-64 Polyclonal Antibody**  
Catalog # AP69328**Specification**

---

**CstF-64 Polyclonal Antibody - Product Information**

Application	WB, IHC-P, IF
Primary Accession	<a href="#">P33240</a>
Reactivity	Human, Mouse
Host	Rabbit
Clonality	Polyclonal

**CstF-64 Polyclonal Antibody - Additional Information****Gene ID** 1478**Other Names**

CSTF2; Cleavage stimulation factor subunit 2; CF-1 64 kDa subunit; Cleavage stimulation factor 64 kDa subunit; CSTF 64 kDa subunit; CstF-64

**Dilution**WB~~Western Blot: 1/500 - 1/2000. Immunohistochemistry: 1/100 - 1/300. Immunofluorescence: 1/200 - 1/1000. ELISA: 1/5000. Not yet tested in other applications.  
IHC-P~~N/A  
IF~~1:50~200**Format**

Liquid in PBS containing 50% glycerol, 0.5% BSA and 0.09% (W/V) sodium azide.

**Storage Conditions**

-20°C

**CstF-64 Polyclonal Antibody - Protein Information****Name** CSTF2**Function**

One of the multiple factors required for polyadenylation and 3'-end cleavage of mammalian pre-mRNAs. This subunit is directly involved in the binding to pre-mRNAs.

**Cellular Location**

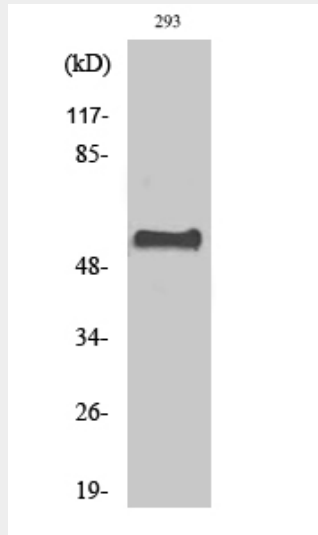
Nucleus. Note=Localized with DDX1 in cleavage bodies.

**CstF-64 Polyclonal Antibody - Protocols**

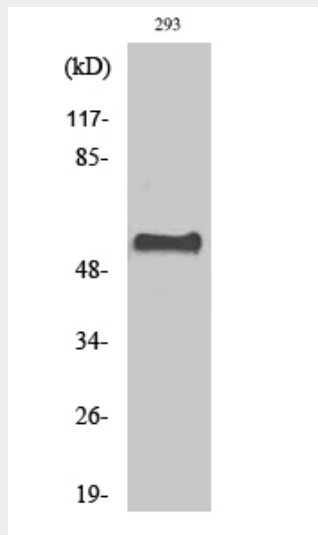
Provided below are standard protocols that you may find useful for product applications.

- [Western Blot](#)
- [Blocking Peptides](#)
- [Dot Blot](#)
- [Immunohistochemistry](#)
- [Immunofluorescence](#)
- [Immunoprecipitation](#)
- [Flow Cytometry](#)
- [Cell Culture](#)

### CstF-64 Polyclonal Antibody - Images



Western Blot analysis of various cells using CstF-64 Polyclonal Antibody diluted at 1:1000 cells nucleus extracted by Minute TM Cytoplasmic and Nuclear Fractionation kit (SC-003, Invent biotech, MN, USA).



Western Blot analysis of various cells using CstF-64 Polyclonal Antibody diluted at 1:1000 cells nucleus extracted by Minute TM Cytoplasmic and Nuclear Fractionation kit (SC-003, Invent biotech, MN, USA).

### CstF-64 Polyclonal Antibody - Background

One of the multiple factors required for polyadenylation and 3'-end cleavage of mammalian

pre-mRNAs. This subunit is directly involved in the binding to pre-mRNAs (By similarity).