

**CtBP1 Polyclonal Antibody**  
**Catalog # AP69331****Specification**

---

**CtBP1 Polyclonal Antibody - Product Information**

Application	WB, IHC-P
Primary Accession	<a href="#">Q13363</a>
Reactivity	Human, Mouse, Rat
Host	Rabbit
Clonality	Polyclonal

**CtBP1 Polyclonal Antibody - Additional Information****Gene ID** 1487**Other Names**

CTBP1; CTBP; C-terminal-binding protein 1; CtBP1

**Dilution**

WB~~Western Blot: 1/500 - 1/2000. Immunohistochemistry: 1/100 - 1/300. ELISA: 1/20000. Not yet tested in other applications.

IHC-P~~N/A

**Format**

Liquid in PBS containing 50% glycerol, 0.5% BSA and 0.09% (W/V) sodium azide.

**Storage Conditions**

-20°C

**CtBP1 Polyclonal Antibody - Protein Information****Name** CTBP1**Synonyms** CTBP**Function**

Corepressor targeting diverse transcription regulators such as GLIS2 or BCL6. Has dehydrogenase activity. Involved in controlling the equilibrium between tubular and stacked structures in the Golgi complex. Functions in brown adipose tissue (BAT) differentiation.

**Cellular Location**

Cytoplasm. Nucleus

**Tissue Location**

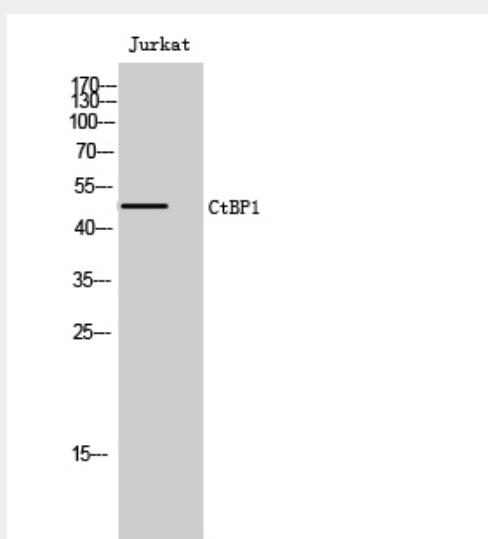
Expressed in germinal center B-cells.

## CtBP1 Polyclonal Antibody - Protocols

Provided below are standard protocols that you may find useful for product applications.

- [Western Blot](#)
- [Blocking Peptides](#)
- [Dot Blot](#)
- [Immunohistochemistry](#)
- [Immunofluorescence](#)
- [Immunoprecipitation](#)
- [Flow Cytometry](#)
- [Cell Culture](#)

## CtBP1 Polyclonal Antibody - Images



Western Blot analysis of Jurkat cells using CtBP1 Polyclonal Antibody

## CtBP1 Polyclonal Antibody - Background

Corepressor targeting diverse transcription regulators such as GLIS2 or BCL6. Has dehydrogenase activity. Involved in controlling the equilibrium between tubular and stacked structures in the Golgi complex. Functions in brown adipose tissue (BAT) differentiation.