

Cyclin A1 Polyclonal Antibody
Catalog # AP69351**Specification**

Cyclin A1 Polyclonal Antibody - Product Information

Application	WB, IHC-P
Primary Accession	P78396
Reactivity	Human, Mouse, Rat
Host	Rabbit
Clonality	Polyclonal

Cyclin A1 Polyclonal Antibody - Additional Information**Gene ID** 8900**Other Names**

CCNA1; Cyclin-A1

Dilution

WB~~Western Blot: 1/500 - 1/2000. Immunohistochemistry: 1/100 - 1/300. ELISA: 1/40000. Not yet tested in other applications.

IHC-P~~N/A

Format

Liquid in PBS containing 50% glycerol, 0.5% BSA and 0.09% (W/V) sodium azide.

Storage Conditions

-20°C

Cyclin A1 Polyclonal Antibody - Protein Information**Name** CCNA1**Function**

May be involved in the control of the cell cycle at the G1/S (start) and G2/M (mitosis) transitions. May primarily function in the control of the germline meiotic cell cycle and additionally in the control of mitotic cell cycle in some somatic cells.

Cellular Location

Nucleus {ECO:0000250|UniProtKB:P20248}.

Tissue Location

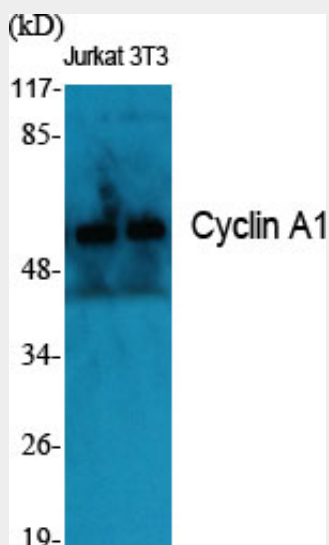
Very high levels in testis and very low levels in brain. Also found in myeloid leukemia cell lines

Cyclin A1 Polyclonal Antibody - Protocols

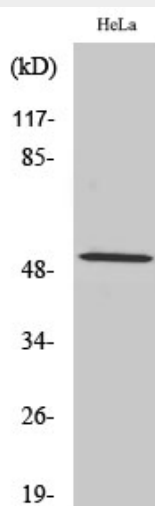
Provided below are standard protocols that you may find useful for product applications.

- [Western Blot](#)
- [Blocking Peptides](#)
- [Dot Blot](#)
- [Immunohistochemistry](#)
- [Immunofluorescence](#)
- [Immunoprecipitation](#)
- [Flow Cytometry](#)
- [Cell Culture](#)

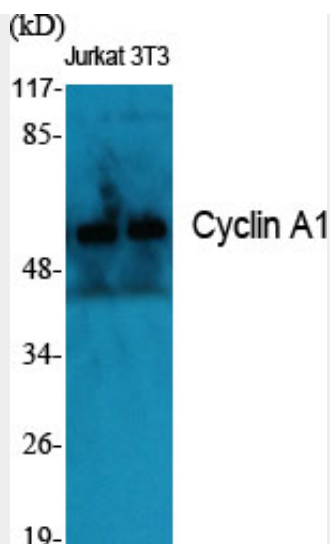
Cyclin A1 Polyclonal Antibody - Images



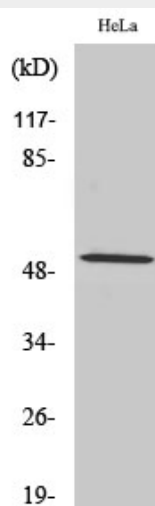
Western Blot analysis of various cells using Cyclin A1 Polyclonal Antibody diluted at 1:2000



Western Blot analysis of HeLa cells using Cyclin A1 Polyclonal Antibody diluted at 1:2000



Western Blot analysis of various cells using Cyclin A1 Polyclonal Antibody diluted at 1:2000



Western Blot analysis of HeLa cells using Cyclin A1 Polyclonal Antibody diluted at 1:2000

Cyclin A1 Polyclonal Antibody - Background

May be involved in the control of the cell cycle at the G1/S (start) and G2/M (mitosis) transitions. May primarily function in the control of the germline meiotic cell cycle and additionally in the control of mitotic cell cycle in some somatic cells.