

**Cyclin G Polyclonal Antibody**  
**Catalog # AP69364****Specification**

---

**Cyclin G Polyclonal Antibody - Product Information**

Application	WB, IHC-P
Primary Accession	<a href="#">P51959</a>
Reactivity	Human, Mouse, Rat
Host	Rabbit
Clonality	Polyclonal

**Cyclin G Polyclonal Antibody - Additional Information****Gene ID** 900**Other Names**

CCNG1; CCNG; CYCG1; Cyclin-G1; Cyclin-G

**Dilution**

WB~~Western Blot: 1/500 - 1/2000. Immunohistochemistry: 1/100 - 1/300. ELISA: 1/40000. Not yet tested in other applications.

IHC-P~~N/A

**Format**

Liquid in PBS containing 50% glycerol, 0.5% BSA and 0.09% (W/V) sodium azide.

**Storage Conditions**

-20°C

**Cyclin G Polyclonal Antibody - Protein Information****Name** CCNG1**Synonyms** CCNG, CYCG1**Function**

May play a role in growth regulation. Is associated with G2/M phase arrest in response to DNA damage. May be an intermediate by which p53 mediates its role as an inhibitor of cellular proliferation (By similarity).

**Cellular Location**

Nucleus. Note=DNA replication foci after DNA damage

**Tissue Location**

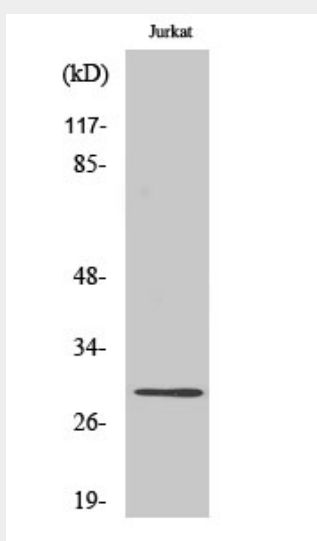
High levels in skeletal muscle, ovary, kidney and colon

## Cyclin G Polyclonal Antibody - Protocols

Provided below are standard protocols that you may find useful for product applications.

- [Western Blot](#)
- [Blocking Peptides](#)
- [Dot Blot](#)
- [Immunohistochemistry](#)
- [Immunofluorescence](#)
- [Immunoprecipitation](#)
- [Flow Cytometry](#)
- [Cell Culture](#)

## Cyclin G Polyclonal Antibody - Images



## Cyclin G Polyclonal Antibody - Background

May play a role in growth regulation. Is associated with G2/M phase arrest in response to DNA damage. May be an intermediate by which p53 mediates its role as an inhibitor of cellular proliferation (By similarity).