

**TMPRSS3 Antibody (Center)**  
**Affinity Purified Rabbit Polyclonal Antibody (Pab)**  
**Catalog # AP6936C****Specification**

---

**TMPRSS3 Antibody (Center) - Product Information**

Application	IF, WB,E
Primary Accession	<a href="#">P57727</a>
Reactivity	Human
Host	Rabbit
Clonality	Polyclonal
Isotype	Rabbit IgG
Calculated MW	49405
Antigen Region	272-300

**TMPRSS3 Antibody (Center) - Additional Information****Gene ID** 64699**Other Names**

Transmembrane protease serine 3, 3421-, Serine protease TADG-12, Tumor-associated differentially-expressed gene 12 protein, TMPRSS3, ECHOS1, TADG12

**Target/Specificity**

This TMPRSS3 antibody is generated from rabbits immunized with a KLH conjugated synthetic peptide between 272-300 amino acids from the Central region of human TMPRSS3.

**Dilution**

IF~~1:10~50

WB~~1:1000

E~~Use at an assay dependent concentration.

**Format**

Purified polyclonal antibody supplied in PBS with 0.09% (W/V) sodium azide. This antibody is purified through a protein A column, followed by peptide affinity purification.

**Storage**

Maintain refrigerated at 2-8°C for up to 2 weeks. For long term storage store at -20°C in small aliquots to prevent freeze-thaw cycles.

**Precautions**

TMPRSS3 Antibody (Center) is for research use only and not for use in diagnostic or therapeutic procedures.

**TMPRSS3 Antibody (Center) - Protein Information****Name** TMPRSS3

**Synonyms** ECHOS1, TADG12

**Function** Probable serine protease that plays a role in hearing. Acts as a permissive factor for cochlear hair cell survival and activation at the onset of hearing and is required for saccular hair cell survival (By similarity). Activates ENaC (in vitro).

**Cellular Location**

Endoplasmic reticulum membrane; Single-pass type II membrane protein

**Tissue Location**

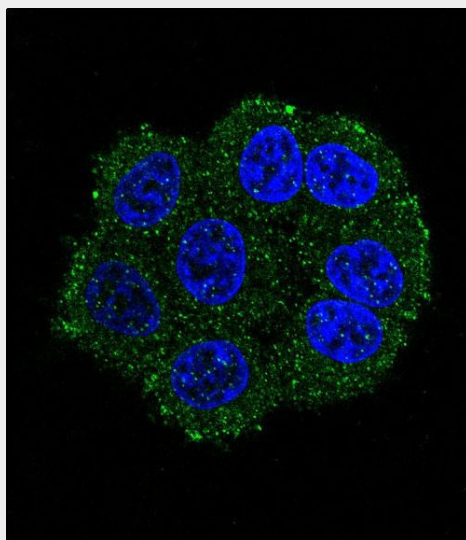
Expressed in many tissues including fetal cochlea. Isoform T is found at increased levels in some carcinomas

**TMPRSS3 Antibody (Center) - Protocols**

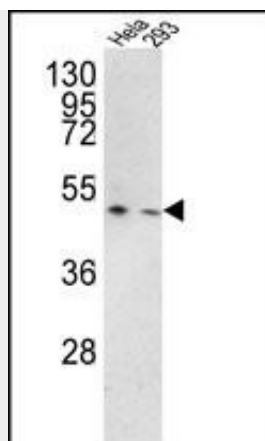
Provided below are standard protocols that you may find useful for product applications.

- [Western Blot](#)
- [Blocking Peptides](#)
- [Dot Blot](#)
- [Immunohistochemistry](#)
- [Immunofluorescence](#)
- [Immunoprecipitation](#)
- [Flow Cytometry](#)
- [Cell Culture](#)

**TMPRSS3 Antibody (Center) - Images**



Confocal immunofluorescent analysis of TMPRSS3 Antibody (Center)(Cat#AP6936c) with HeLa cell followed by Alexa Fluor 488-conjugated goat anti-rabbit IgG (green). DAPI was used to stain the cell nuclear (blue).



Western blot analysis of TMPRSS3 Antibody (Center) (Cat. #AP6936c) in HeLa, 293 cell line lysates (35ug/lane). TMPRSS3 (arrow) was detected using the purified Pab.

#### **TMPRSS3 Antibody (Center) - Background**

TMPRSS3 belongs to the serine protease family. This protein contains a serine protease domain, a transmembrane domain, a LDL receptor-like domain, and a scavenger receptor cysteine-rich domain. Serine proteases are known to be involved in a variety of biological processes, whose malfunction often leads to human diseases and disorders.

#### **TMPRSS3 Antibody (Center) - References**

Elbracht,M., et.al., J. Med. Genet. 44 (6), E81 (2007)