

**CYP2S1 Polyclonal Antibody**  
**Catalog # AP69406****Specification**

---

**CYP2S1 Polyclonal Antibody - Product Information**

Application	WB, IHC-P, IF
Primary Accession	<a href="#">Q96SQ9</a>
Reactivity	Human, Mouse
Host	Rabbit
Clonality	Polyclonal

**CYP2S1 Polyclonal Antibody - Additional Information****Gene ID** 29785**Other Names**

CYP2S1; Cytochrome P450 2S1; CYP11S1

**Dilution**

WB~~Western Blot: 1/500 - 1/2000. Immunohistochemistry: 1/100 - 1/300. Immunofluorescence: 1/200 - 1/1000. ELISA: 1/5000. Not yet tested in other applications.

IHC-P~~N/A

IF~~1:50~200

**Format**

Liquid in PBS containing 50% glycerol, 0.5% BSA and 0.09% (W/V) sodium azide.

**Storage Conditions**

-20°C

**CYP2S1 Polyclonal Antibody - Protein Information****Name** CYP2S1 {ECO:0000303|PubMed:11181079, ECO:0000312|HGNC:HGNC:15654}**Function**

A cytochrome P450 monooxygenase involved in the metabolism of retinoids and eicosanoids (PubMed:<a href="http://www.uniprot.org/citations/12711469" target="\_blank">12711469</a>, PubMed:<a href="http://www.uniprot.org/citations/21068195" target="\_blank">21068195</a>). In epidermis, may contribute to the oxidative metabolism of all-trans- retinoic acid. For this activity, uses molecular oxygen inserting one oxygen atom into a substrate, and reducing the second into a water molecule, with two electrons provided by NADPH via cytochrome P450 reductase (NADPH--hemoprotein reductase) (PubMed:<a href="http://www.uniprot.org/citations/12711469" target="\_blank">12711469</a>). Additionally, displays peroxidase and isomerase activities toward various oxygenated eicosanoids such as prostaglandin H2 (PGH2) and hydroperoxyeicosatetraenoates (HPETEs) (PubMed:<a href="http://www.uniprot.org/citations/21068195" target="\_blank">21068195</a>). Independently of cytochrome P450 reductase, NADPH, and O<sub>2</sub>, catalyzes the breakdown of PGH2 to hydroxyheptadecatrienoic acid (HHT) and malondialdehyde (MDA), which is known to act as a

mediator of DNA damage (PubMed:<a href="http://www.uniprot.org/citations/21068195" target="\_blank">21068195</a>).

#### Cellular Location

Endoplasmic reticulum membrane; Peripheral membrane protein. Microsome membrane; Peripheral membrane protein

#### Tissue Location

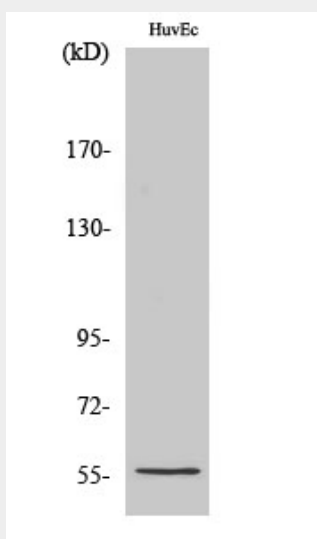
Expressed at higher levels in extrahepatic tissues including trachea, lung, stomach, small intestine, colon, kidney, breast, placenta and spleen (PubMed:11181079, PubMed:12711469) Expressed in peripheral blood leukocytes (PubMed:11181079) Constitutively expressed in skin (at protein level) (PubMed:12711469)

### CYP2S1 Polyclonal Antibody - Protocols

Provided below are standard protocols that you may find useful for product applications.

- [Western Blot](#)
- [Blocking Peptides](#)
- [Dot Blot](#)
- [Immunohistochemistry](#)
- [Immunofluorescence](#)
- [Immunoprecipitation](#)
- [Flow Cytometry](#)
- [Cell Culture](#)

### CYP2S1 Polyclonal Antibody - Images



Western Blot analysis of various cells using CYP2S1 Polyclonal Antibody diluted at 1:2000

### CYP2S1 Polyclonal Antibody - Background

Has a potential importance for extrahepatic xenobiotic metabolism.