

CYP2U1 Polyclonal Antibody
Catalog # AP69407**Specification****CYP2U1 Polyclonal Antibody - Product Information**

Application	WB, IHC-P, IF
Primary Accession	Q7Z449
Reactivity	Human, Mouse, Rat
Host	Rabbit
Clonality	Polyclonal

CYP2U1 Polyclonal Antibody - Additional Information

Gene ID 113612

Other Names

CYP2U1; Cytochrome P450 2U1

Dilution

WB~~Western Blot: 1/500 - 1/2000. Immunohistochemistry: 1/100 - 1/300. Immunofluorescence: 1/200 - 1/1000. ELISA: 1/20000. Not yet tested in other applications.

IHC-P~~N/A

IF~~1:50~200

Format

Liquid in PBS containing 50% glycerol, 0.5% BSA and 0.09% (W/V) sodium azide.

Storage Conditions

-20°C

CYP2U1 Polyclonal Antibody - Protein Information**Name** CYP2U1 {ECO:0000303|PubMed:14660610, ECO:0000312|HGNC:HGNC:20582}**Function**

A cytochrome P450 monooxygenase involved in the metabolism of arachidonic acid and its conjugates (PubMed:14660610, PubMed:24563460). Mechanistically, uses molecular oxygen inserting one oxygen atom into a substrate, and reducing the second into a water molecule, with two electrons provided by NADPH via cytochrome P450 reductase (CPR; NADPH- ferrihemoprotein reductase) (PubMed:14660610, PubMed:24563460). Acts as an omega and omega-1 hydroxylase for arachidonic acid and possibly for other long chain fatty acids. May modulate the arachidonic acid signaling pathway and play a role in other fatty acid signaling processes (PubMed:14660610, PubMed:24563460). May down-regulate the biological activities of

N-arachidonoyl-serotonin, an endocannabinoid that has anti-nociceptive effects through inhibition of fatty acid amide hydrolase FAAH, TRPV1 receptor and T-type calcium channels. Catalyzes C-2 oxidation of the indole ring of N-arachidonoyl-serotonin forming a less active product 2-oxo-N-arachidonoyl-serotonin (PubMed:24563460).

Cellular Location

Endoplasmic reticulum membrane; Multi-pass membrane protein. Microsome membrane; Multi-pass membrane protein. Mitochondrion inner membrane; Multi-pass membrane protein

Tissue Location

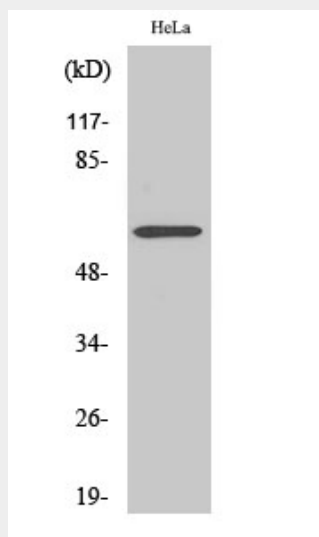
Widely expressed with stronger expression in thymus, heart and cerebellum.

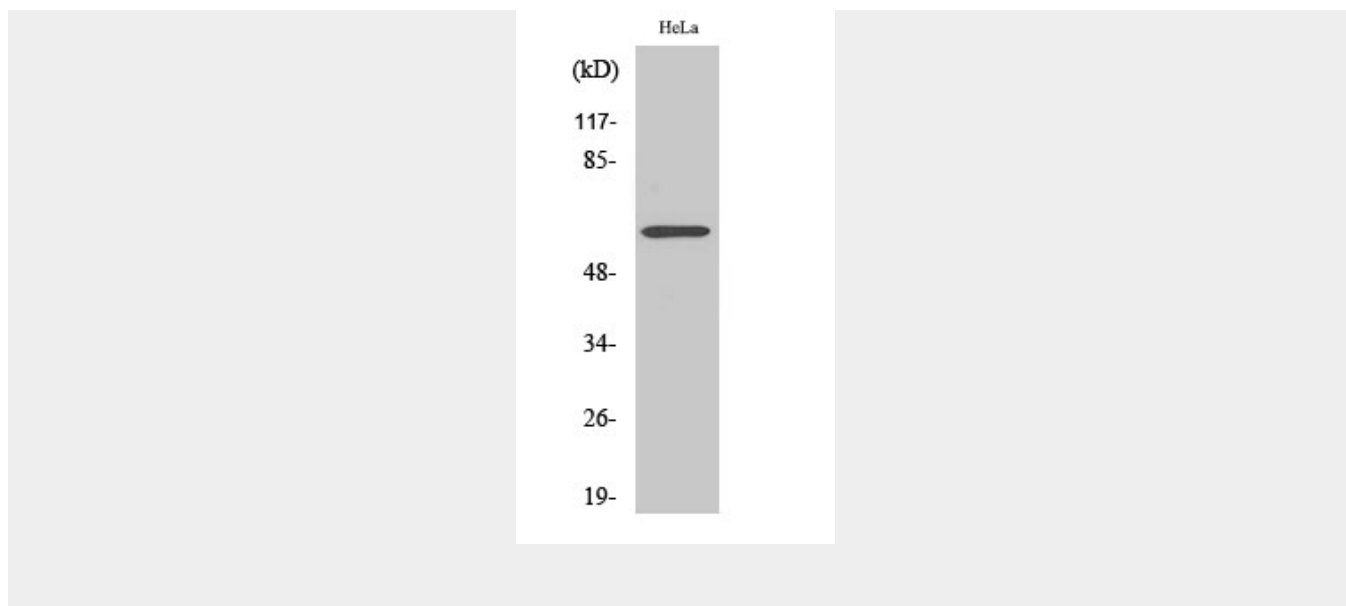
CYP2U1 Polyclonal Antibody - Protocols

Provided below are standard protocols that you may find useful for product applications.

- [Western Blot](#)
- [Blocking Peptides](#)
- [Dot Blot](#)
- [Immunohistochemistry](#)
- [Immunofluorescence](#)
- [Immunoprecipitation](#)
- [Flow Cytometry](#)
- [Cell Culture](#)

CYP2U1 Polyclonal Antibody - Images





CYP2U1 Polyclonal Antibody - Background

Catalyzes the hydroxylation of arachidonic acid, docosahexaenoic acid and other long chain fatty acids. May modulate the arachidonic acid signaling pathway and play a role in other fatty acid signaling processes.