

**IGFBP4 Antibody (Center)**  
**Affinity Purified Rabbit Polyclonal Antibody (Pab)**  
**Catalog # AP6941c****Specification**

---

**IGFBP4 Antibody (Center) - Product Information**

Application	IHC-P, WB,E
Primary Accession	<a href="#">P22692</a>
Other Accession	<a href="#">P24854</a> , <a href="#">Q05716</a> , <a href="#">NP_001543.2</a> , <a href="#">Q28893</a>
Reactivity	Human, Mouse
Predicted	Bovine, Pig, Sheep
Host	Rabbit
Clonality	Polyclonal
Isotype	Rabbit IgG
Calculated MW	27934
Antigen Region	96-124

**IGFBP4 Antibody (Center) - Additional Information****Gene ID** 3487**Other Names**

Insulin-like growth factor-binding protein 4, IBP-4, IGF-binding protein 4, IGFBP-4, IGFBP4, IBP4

**Target/Specificity**

This IGFBP4 antibody is generated from rabbits immunized with a KLH conjugated synthetic peptide between 96-124 amino acids from the Central region of human IGFBP4.

**Dilution**

IHC-P~~1:10~50

WB~~1:1000

E~~Use at an assay dependent concentration.

**Format**

Purified polyclonal antibody supplied in PBS with 0.09% (W/V) sodium azide. This antibody is purified through a protein A column, followed by peptide affinity purification.

**Storage**

Maintain refrigerated at 2-8°C for up to 2 weeks. For long term storage store at -20°C in small aliquots to prevent freeze-thaw cycles.

**Precautions**

IGFBP4 Antibody (Center) is for research use only and not for use in diagnostic or therapeutic procedures.

**IGFBP4 Antibody (Center) - Protein Information****Name** IGFBP4

**Synonyms IBP4**

**Function** IGF-binding proteins prolong the half-life of the IGFs and have been shown to either inhibit or stimulate the growth promoting effects of the IGFs on cell culture. They alter the interaction of IGFs with their cell surface receptors.

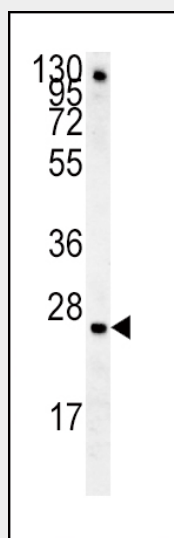
**Cellular Location**

Secreted.

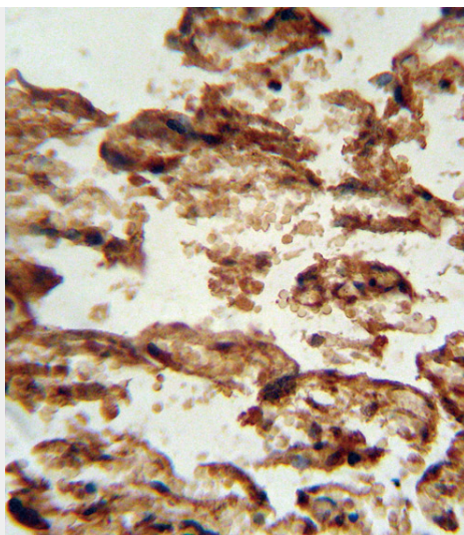
**IGFBP4 Antibody (Center) - Protocols**

Provided below are standard protocols that you may find useful for product applications.

- [Western Blot](#)
- [Blocking Peptides](#)
- [Dot Blot](#)
- [Immunohistochemistry](#)
- [Immunofluorescence](#)
- [Immunoprecipitation](#)
- [Flow Cytometry](#)
- [Cell Culture](#)

**IGFBP4 Antibody (Center) - Images**

IGFBP4 Antibody (Center) (Cat. #AP6941c) western blot analysis in mouse lung tissue lysates (15ug/lane). This demonstrates the IGFBP4 antibody detected IGFBP4 protein (arrow).



IGFBP4 antibody (Center) (Cat. #AP6941c) immunohistochemistry analysis in formalin fixed and paraffin embedded human placenta tissue followed by peroxidase conjugation of the secondary antibody and DAB staining. This data demonstrates the use of the IGFBP4 antibody (Center) for immunohistochemistry. Clinical relevance has not been evaluated.

#### **IGFBP4 Antibody (Center) - Background**

This gene is a member of the insulin-like growth factor binding protein (IGFBP) family and encodes a protein with an IGFBP domain and a thyroglobulin type-I domain. The protein binds both insulin-like growth factors (IGFs) I and II and circulates in the plasma in both glycosylated and non-glycosylated forms. Binding of this protein prolongs the half-life of the IGFs and alters their interaction with cell surface receptors.

#### **IGFBP4 Antibody (Center) - References**

Giroux, S., et al. Bone 47(5):975-981(2010)  
Canzian, F., et al. Hum. Mol. Genet. 19(19):3873-3884(2010)  
Bartling, B., et al. Int. J. Mol. Med. 25(1):89-96(2010)  
Johnatty, S.E., et al. PLoS Genet. 6 (7), E1001016 (2010) :  
Yerges, L.M., et al. J. Bone Miner. Res. 24(12):2039-2049(2009)