

Cystatin 11 Polyclonal Antibody
Catalog # AP69430**Specification**

Cystatin 11 Polyclonal Antibody - Product Information

Application	WB
Primary Accession	Q9H112
Reactivity	Human
Host	Rabbit
Clonality	Polyclonal

Cystatin 11 Polyclonal Antibody - Additional Information**Gene ID** 140880**Other Names**

CST11; CST8L; Cystatin-11

Dilution

WB~~Western Blot: 1/500 - 1/2000. ELISA: 1/40000. Not yet tested in other applications.

Format

Liquid in PBS containing 50% glycerol, 0.5% BSA and 0.09% (W/V) sodium azide.

Storage Conditions

-20°C

Cystatin 11 Polyclonal Antibody - Protein Information**Name** CST11**Synonyms** CST8L**Function**

Has antibacterial activity against the Gram-negative bacteria E.coli. May play a role in sperm maturation and fertilization.

Cellular Location

Secreted. Note=Probably secreted into the epididymis lumen, where it localizes to the outer surface of sperm. Specifically localizes to the postacrosomal and tail regions of sperm.

Tissue Location

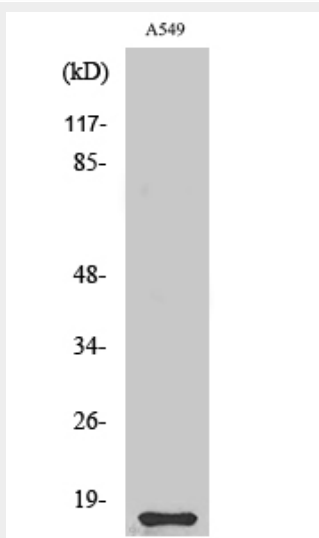
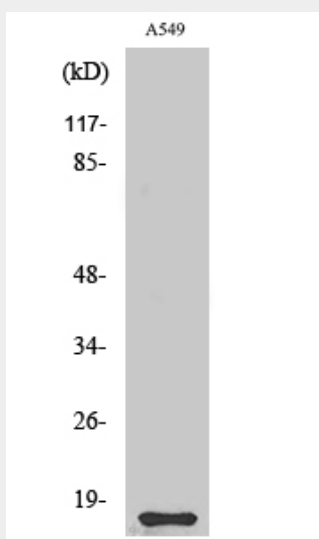
Detected in the epithelium and lumen of the epididymis, and in sperm (at protein level)

Cystatin 11 Polyclonal Antibody - Protocols

Provided below are standard protocols that you may find useful for product applications.

- [Western Blot](#)
- [Blocking Peptides](#)
- [Dot Blot](#)
- [Immunohistochemistry](#)
- [Immunofluorescence](#)
- [Immunoprecipitation](#)
- [Flow Cytometry](#)
- [Cell Culture](#)

Cystatin 11 Polyclonal Antibody - Images



Cystatin 11 Polyclonal Antibody - Background

Has antibacterial activity against the Gram-negative bacteria E.coli. May play a role in sperm maturation and fertilization.