

**D1DR Polyclonal Antibody**  
**Catalog # AP69460****Specification**

---

**D1DR Polyclonal Antibody - Product Information**

Application	WB, IHC-P, IF
Primary Accession	<a href="#">P21728</a>
Reactivity	Human, Mouse, Rat
Host	Rabbit
Clonality	Polyclonal

**D1DR Polyclonal Antibody - Additional Information****Gene ID** 1812**Other Names**

DRD1; D(1A) dopamine receptor; Dopamine D1 receptor

**Dilution**

WB~~Western Blot: 1/500 - 1/2000. Immunohistochemistry: 1/100 - 1/300. Immunofluorescence: 1/200 - 1/1000. ELISA: 1/5000. Not yet tested in other applications.

IHC-P~~N/A

IF~~1:50~200

**Format**

Liquid in PBS containing 50% glycerol, 0.5% BSA and 0.09% (W/V) sodium azide.

**Storage Conditions**

-20°C

**D1DR Polyclonal Antibody - Protein Information****Name** DRD1**Function**

Dopamine receptor whose activity is mediated by G proteins which activate adenylyl cyclase.

**Cellular Location**

Cell membrane {ECO:0000250|UniProtKB:P18901}; Multi-pass membrane protein {ECO:0000250|UniProtKB:P18901}. Endoplasmic reticulum membrane {ECO:0000250|UniProtKB:P18901}; Multi-pass membrane protein {ECO:0000250|UniProtKB:P18901}. Cell projection, cilium membrane; Multi-pass membrane protein. Cell projection, dendrite {ECO:0000250|UniProtKB:Q61616}. Cell projection, dendritic spine {ECO:0000250|UniProtKB:Q61616}. Note=Transport from the endoplasmic reticulum to the cell surface is regulated by interaction with DNAJC14 {ECO:0000250|UniProtKB:P18901}

**Tissue Location**

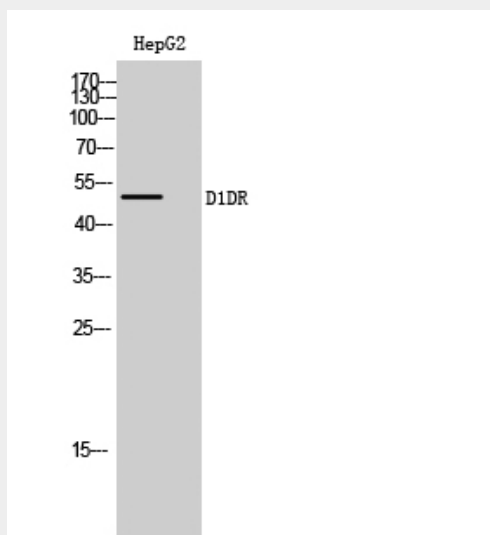
Detected in caudate, nucleus accumbens and in the olfactory tubercle.

## D1DR Polyclonal Antibody - Protocols

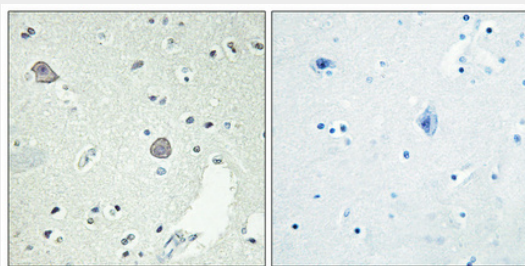
Provided below are standard protocols that you may find useful for product applications.

- [Western Blot](#)
- [Blocking Peptides](#)
- [Dot Blot](#)
- [Immunohistochemistry](#)
- [Immunofluorescence](#)
- [Immunoprecipitation](#)
- [Flow Cytometry](#)
- [Cell Culture](#)

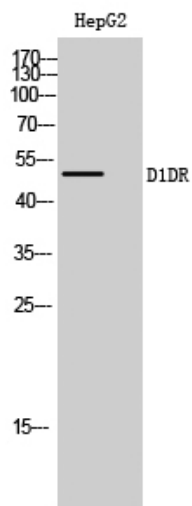
## D1DR Polyclonal Antibody - Images



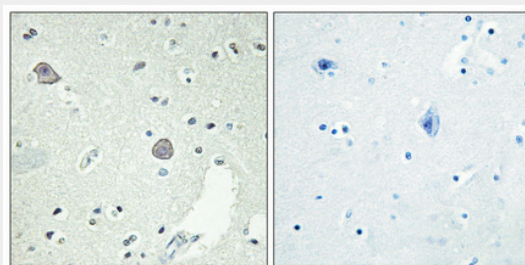
Western Blot analysis of HepG2 cells using D1DR Polyclonal Antibody



Immunohistochemical analysis of paraffin-embedded Human brain. Antibody was diluted at 1:100(4°,overnight). High-pressure and temperature Tris-EDTA,pH8.0 was used for antigen retrieval. Negative contrl (right) obtained from antibody was pre-absorbed by immunogen peptide.



Western Blot analysis of HepG2 cells using D1DR Polyclonal Antibody



Immunohistochemical analysis of paraffin-embedded Human brain. Antibody was diluted at 1:100(4°,overnight). High-pressure and temperature Tris-EDTA,pH8.0 was used for antigen retrieval. Negative contrl (right) obtained from antibody was pre-absorbed by immunogen peptide.

#### **D1DR Polyclonal Antibody - Background**

Dopamine receptor whose activity is mediated by G proteins which activate adenylyl cyclase.