

DDX55 Polyclonal Antibody
Catalog # AP69500**Specification**

DDX55 Polyclonal Antibody - Product Information

Application	WB, IHC-P
Primary Accession	Q8NHQ9
Reactivity	Human, Mouse
Host	Rabbit
Clonality	Polyclonal

DDX55 Polyclonal Antibody - Additional Information**Gene ID** 57696**Other Names**

DDX55; KIAA1595; ATP-dependent RNA helicase DDX55; DEAD box protein 55

Dilution

WB~~Western Blot: 1/500 - 1/2000. Immunohistochemistry: 1/100 - 1/300. ELISA: 1/40000. Not yet tested in other applications.

IHC-P~~N/A

Format

Liquid in PBS containing 50% glycerol, 0.5% BSA and 0.09% (W/V) sodium azide.

Storage Conditions

-20°C

DDX55 Polyclonal Antibody - Protein Information**Name** DDX55 ([HGNC:20085](#))**Synonyms** KIAA1595**Function**

Probable ATP-binding RNA helicase. Has ATPase activity and is involved in the maturation of precursor large subunit rRNAs (PubMed:33048000).

Cellular Location

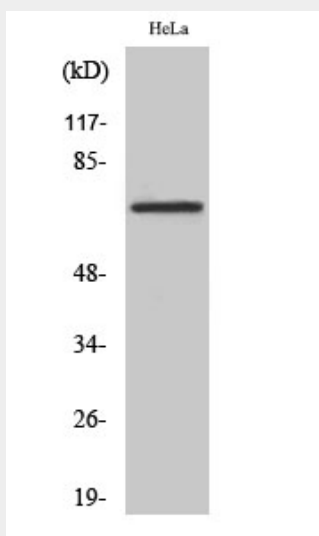
Nucleus, nucleoplasm

DDX55 Polyclonal Antibody - Protocols

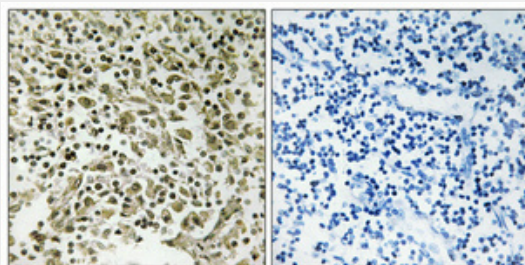
Provided below are standard protocols that you may find useful for product applications.

- [Western Blot](#)
- [Blocking Peptides](#)
- [Dot Blot](#)
- [Immunohistochemistry](#)
- [Immunofluorescence](#)
- [Immunoprecipitation](#)
- [Flow Cytometry](#)
- [Cell Culture](#)

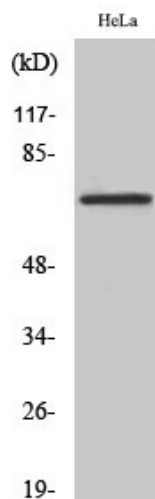
DDX55 Polyclonal Antibody - Images



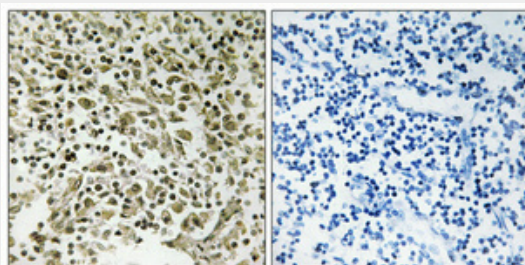
Western Blot analysis of various cells using DDX55 Polyclonal Antibody diluted at 1:500



Immunohistochemical analysis of paraffin-embedded Human lung cancer. Antibody was diluted at 1:100(4°,overnight). High-pressure and temperature Tris-EDTA,pH8.0 was used for antigen retrieval. Negative contrl (right) obtained from antibody was pre-absorbed by immunogen peptide.



Western Blot analysis of various cells using DDX55 Polyclonal Antibody diluted at 1:500



Immunohistochemical analysis of paraffin-embedded Human lung cancer. Antibody was diluted at 1:100(4°,overnight). High-pressure and temperature Tris-EDTA,pH8.0 was used for antigen retrieval. Negative contrl (right) obtained from antibody was pre-absorbed by immunogen peptide.

DDX55 Polyclonal Antibody - Background

Probable ATP-binding RNA helicase.