

**DHA Kinase Polyclonal Antibody**  
**Catalog # AP69524****Specification**

---

**DHA Kinase Polyclonal Antibody - Product Information**

Application	WB, IHC-P
Primary Accession	<a href="#">Q3LXA3</a>
Reactivity	Human, Mouse, Rat
Host	Rabbit
Clonality	Polyclonal

**DHA Kinase Polyclonal Antibody - Additional Information****Gene ID** 26007**Other Names**

DAK; Bifunctional ATP-dependent dihydroxyacetone kinase/FAD-AMP lyase; cyclizing

**Dilution**WB~~Western Blot: 1/500 - 1/2000. ELISA: 1/20000. Not yet tested in other applications.  
IHC-P~~N/A**Format**

Liquid in PBS containing 50% glycerol, 0.5% BSA and 0.09% (W/V) sodium azide.

**Storage Conditions**

-20°C

**DHA Kinase Polyclonal Antibody - Protein Information****Name** TKFC ([HGNC:24552](#))**Function**

Catalyzes both the phosphorylation of dihydroxyacetone and of glyceraldehyde, and the splitting of ribonucleoside diphosphate-X compounds among which FAD is the best substrate. Represses IFIH1- mediated cellular antiviral response (PubMed:&lt;a href="http://www.uniprot.org/citations/17600090" target="\_blank"&gt;17600090&lt;/a&gt;).

**Tissue Location**

Detected in erythrocytes (at protein level).

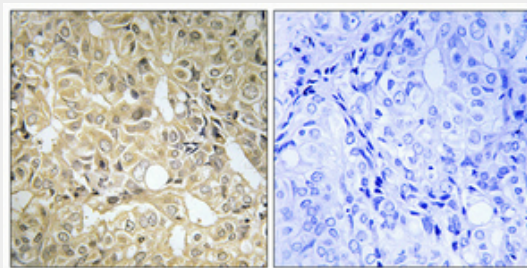
**DHA Kinase Polyclonal Antibody - Protocols**

Provided below are standard protocols that you may find useful for product applications.

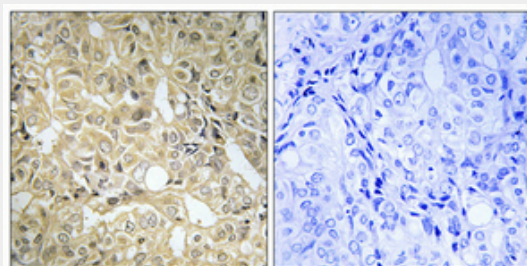
- [Western Blot](#)

- [Blocking Peptides](#)
- [Dot Blot](#)
- [Immunohistochemistry](#)
- [Immunofluorescence](#)
- [Immunoprecipitation](#)
- [Flow Cytometry](#)
- [Cell Culture](#)

#### **DHA Kinase Polyclonal Antibody - Images**



Immunohistochemical analysis of paraffin-embedded Human prostate cancer. Antibody was diluted at 1:100(4°,overnight). High-pressure and temperature Tris-EDTA,pH8.0 was used for antigen retrieval. Negative contrl (right) obtained from antibody was pre-absorbed by immunogen peptide.



Immunohistochemical analysis of paraffin-embedded Human prostate cancer. Antibody was diluted at 1:100(4°,overnight). High-pressure and temperature Tris-EDTA,pH8.0 was used for antigen retrieval. Negative contrl (right) obtained from antibody was pre-absorbed by immunogen peptide.

#### **DHA Kinase Polyclonal Antibody - Background**

Catalyzes both the phosphorylation of dihydroxyacetone and of glyceraldehyde, and the splitting of ribonucleoside diphosphate-X compounds among which FAD is the best substrate. Represses IFIH1-mediated cellular antiviral response (PubMed:17600090).