

Doublecortin Polyclonal Antibody
Catalog # AP69589**Specification**

Doublecortin Polyclonal Antibody - Product Information

Application	WB, IHC-P
Primary Accession	O43602
Reactivity	Human, Mouse, Rat
Host	Rabbit
Clonality	Polyclonal

Doublecortin Polyclonal Antibody - Additional Information**Gene ID** 1641**Other Names**

DCX; DBCN; LISX; Neuronal migration protein doublecortin; Doublin; Lissencephalin-X; Lis-X

Dilution

WB~~Western Blot: 1/500 - 1/2000. Immunohistochemistry: 1/100 - 1/300. ELISA: 1/10000. Not yet tested in other applications.

IHC-P~~N/A

Format

Liquid in PBS containing 50% glycerol, 0.5% BSA and 0.09% (W/V) sodium azide.

Storage Conditions

-20°C

Doublecortin Polyclonal Antibody - Protein Information**Name** DCX**Synonyms** DBCN, LISX**Function**

Microtubule-associated protein required for initial steps of neuronal dispersion and cortex lamination during cerebral cortex development. May act by competing with the putative neuronal protein kinase DCLK1 in binding to a target protein. May in that way participate in a signaling pathway that is crucial for neuronal interaction before and during migration, possibly as part of a calcium ion-dependent signal transduction pathway. May be part with PFAH1B1/LIS-1 of overlapping, but distinct, signaling pathways that promote neuronal migration.

Cellular Location

Cytoplasm. Cell projection, neuron projection {ECO:0000250|UniProtKB:Q9ESI7}. Note=Localizes at neurite tips. {ECO:0000250|UniProtKB:Q9ESI7}

Tissue Location

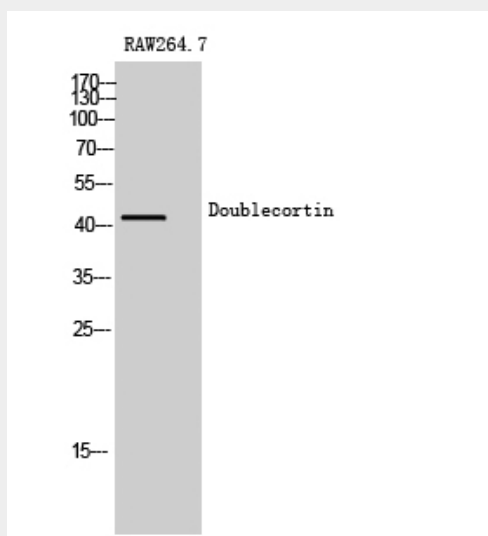
Highly expressed in neuronal cells of fetal brain (in the majority of cells of the cortical plate, intermediate zone and ventricular zone), but not expressed in other fetal tissues. In the adult, highly expressed in the brain frontal lobe, but very low expression in other regions of brain, and not detected in heart, placenta, lung, liver, skeletal muscles, kidney and pancreas

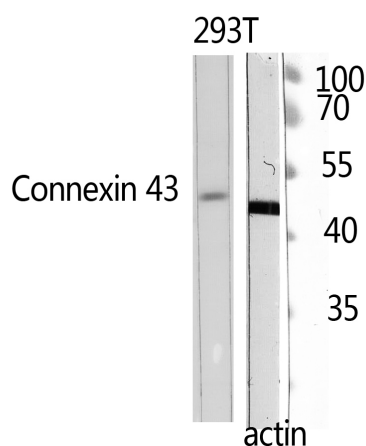
Doublecortin Polyclonal Antibody - Protocols

Provided below are standard protocols that you may find useful for product applications.

- [Western Blot](#)
- [Blocking Peptides](#)
- [Dot Blot](#)
- [Immunohistochemistry](#)
- [Immunofluorescence](#)
- [Immunoprecipitation](#)
- [Flow Cytometry](#)
- [Cell Culture](#)

Doublecortin Polyclonal Antibody - Images





Doublecortin Polyclonal Antibody - Background

Microtubule-associated protein required for initial steps of neuronal dispersion and cortex lamination during cerebral cortex development. May act by competing with the putative neuronal protein kinase DCLK1 in binding to a target protein. May in that way participate in a signaling pathway that is crucial for neuronal interaction before and during migration, possibly as part of a calcium ion-dependent signal transduction pathway. May be part with PAFAH1B1/LIS-1 of overlapping, but distinct, signaling pathways that promote neuronal migration.