

**E2F-2 Polyclonal Antibody**  
**Catalog # AP69626****Specification**

---

**E2F-2 Polyclonal Antibody - Product Information**

Application	WB
Primary Accession	<a href="#">Q14209</a>
Reactivity	Human, Mouse
Host	Rabbit
Clonality	Polyclonal

**E2F-2 Polyclonal Antibody - Additional Information****Gene ID** 1870**Other Names**

E2F2; Transcription factor E2F2; E2F-2

**Dilution**

WB~~Western Blot: 1/500 - 1/2000. Immunohistochemistry: 1/100 - 1/300. ELISA: 1/40000. Not yet tested in other applications.

**Format**

Liquid in PBS containing 50% glycerol, 0.5% BSA and 0.09% (W/V) sodium azide.

**Storage Conditions**

-20°C

**E2F-2 Polyclonal Antibody - Protein Information****Name** E2F2**Function**

Transcription activator that binds DNA cooperatively with DP proteins through the E2 recognition site, 5'-TTTC[CG]CGC-3' found in the promoter region of a number of genes whose products are involved in cell cycle regulation or in DNA replication. The DRTF1/E2F complex functions in the control of cell-cycle progression from G1 to S phase. E2F2 binds specifically to RB1 in a cell-cycle dependent manner.

**Cellular Location**

Nucleus.

**Tissue Location**

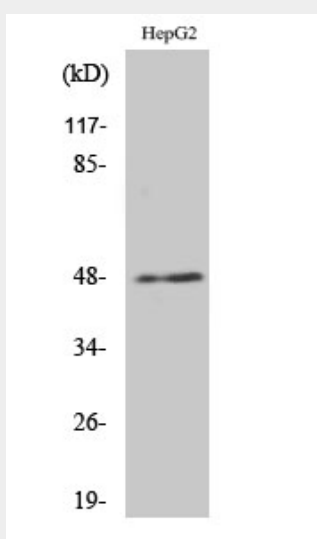
Highest level of expression is found in placenta, low levels are found in lung. Found as well in many immortalized cell lines derived from tumor samples

## E2F-2 Polyclonal Antibody - Protocols

Provided below are standard protocols that you may find useful for product applications.

- [Western Blot](#)
- [Blocking Peptides](#)
- [Dot Blot](#)
- [Immunohistochemistry](#)
- [Immunofluorescence](#)
- [Immunoprecipitation](#)
- [Flow Cytometry](#)
- [Cell Culture](#)

## E2F-2 Polyclonal Antibody - Images



## E2F-2 Polyclonal Antibody - Background

Transcription activator that binds DNA cooperatively with DP proteins through the E2 recognition site, 5'-TTTC[CG]CGC- 3' found in the promoter region of a number of genes whose products are involved in cell cycle regulation or in DNA replication. The DRTF1/E2F complex functions in the control of cell-cycle progression from g1 to s phase. E2F2 binds specifically to RB1 in a cell-cycle dependent manner.