

EDG-5 Polyclonal Antibody
Catalog # AP69650**Specification**

EDG-5 Polyclonal Antibody - Product Information

Application	WB, IHC-P, IF
Primary Accession	O95136
Reactivity	Human, Mouse, Rat
Host	Rabbit
Clonality	Polyclonal

EDG-5 Polyclonal Antibody - Additional Information**Gene ID** 9294**Other Names**

S1PR2; EDG5; Sphingosine 1-phosphate receptor 2; S1P receptor 2; S1P2; Endothelial differentiation G-protein coupled receptor 5; Sphingosine 1-phosphate receptor Edg-5; S1P receptor Edg-5

Dilution

WB~~Western Blot: 1/500 - 1/2000. Immunohistochemistry: 1/100 - 1/300. Immunofluorescence: 1/200 - 1/1000. ELISA: 1/10000. Not yet tested in other applications.
IHC-P~~N/A
IF~~1:50~200

Format

Liquid in PBS containing 50% glycerol, 0.5% BSA and 0.09% (W/V) sodium azide.

Storage Conditions

-20°C

EDG-5 Polyclonal Antibody - Protein Information**Name** S1PR2**Synonyms** EDG5**Function**

Receptor for the lysosphingolipid sphingosine 1-phosphate (S1P) (PubMed:10617617, PubMed:25274307). S1P is a bioactive lysophospholipid that elicits diverse physiological effects on most types of cells and tissues (PubMed:10617617). When expressed in rat HTC4 hepatoma cells, is capable of mediating S1P-induced cell proliferation and suppression of apoptosis (PubMed:10617617). Receptor for the chemokine-like protein FAM19A5 (PubMed:<a

<http://www.uniprot.org/citations/29453251>). Mediates the inhibitory effect of FAM19A5 on vascular smooth muscle cell proliferation and migration (By similarity). In lymphoid follicles, couples the binding of S1P to the activation of GNA13 and downstream inhibition of AKT activation leading to suppression of germinal center (GC) B cell growth and migration outside the GC niche.

Cellular Location

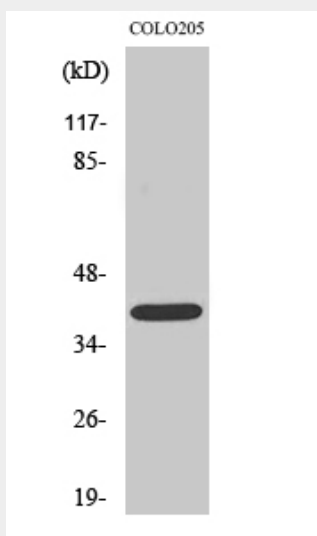
Cell membrane; Multi-pass membrane protein

EDG-5 Polyclonal Antibody - Protocols

Provided below are standard protocols that you may find useful for product applications.

- [Western Blot](#)
- [Blocking Peptides](#)
- [Dot Blot](#)
- [Immunohistochemistry](#)
- [Immunofluorescence](#)
- [Immunoprecipitation](#)
- [Flow Cytometry](#)
- [Cell Culture](#)

EDG-5 Polyclonal Antibody - Images



Western Blot analysis of various cells using EDG-5 Polyclonal Antibody

EDG-5 Polyclonal Antibody - Background

Receptor for the lysosphingolipid sphingosine 1- phosphate (S1P) (PubMed:10617617). S1P is a bioactive lysophospholipid that elicits diverse physiological effects on most types of cells and tissues (PubMed:10617617). When expressed in rat HTC4 hepatoma cells, is capable of mediating S1P-induced cell proliferation and suppression of apoptosis (PubMed:10617617). Receptor for the chemokine-like protein FAM19A5 (PubMed:29453251). Mediates the inhibitory effect of FAM19A5 on vascular smooth muscle cell proliferation and migration (By similarity).