

**HAND1 Polyclonal Antibody**  
**Catalog # AP69684****Specification**

---

**HAND1 Polyclonal Antibody - Product Information**

Application	IHC-P
Primary Accession	<a href="#">O96004</a>
Reactivity	Human, Mouse, Rat
Host	Rabbit
Clonality	Polyclonal

**HAND1 Polyclonal Antibody - Additional Information****Gene ID** 9421**Other Names**

HAND1; BHLHA27; EHAND; Heart- and neural crest derivatives-expressed protein 1; Class A basic helix-loop-helix protein 27; bHLHa27; Extraembryonic tissues; heart, autonomic nervous system and neural crest derivatives-expressed protein 1; eH

**Dilution**

IHC-P~~N/A

**Format**

Liquid in PBS containing 50% glycerol, 0.5% BSA and 0.09% (W/V) sodium azide.

**Storage Conditions**

-20°C

**HAND1 Polyclonal Antibody - Protein Information****Name** HAND1**Synonyms** BHLHA27, EHAND**Function**

Transcription factor that plays an essential role in both trophoblast giant cell differentiation and in cardiac morphogenesis (By similarity). Binds the DNA sequence 5'-NRTCTG-3' (non-canonical E-box) (By similarity). Acts as a transcriptional repressor of SOX15 (By similarity). In the adult, could be required for ongoing expression of cardiac-specific genes (PubMed:<a href="http://www.uniprot.org/citations/9931445" target="\_blank">9931445</a>).

**Cellular Location**

Nucleus, nucleoplasm. Nucleus, nucleolus. Note=Interaction with MDFIC sequesters it into the nucleolus, preventing the transcription factor activity Phosphorylation by PLK4 disrupts the interaction with MDFIC and releases it from the nucleolus, leading to transcription factor activity (By similarity).

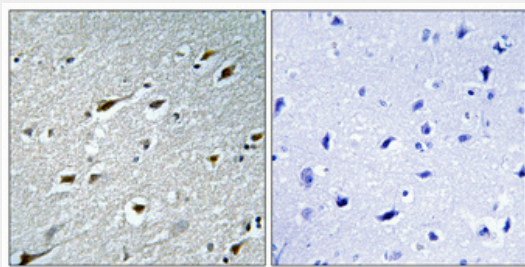
**Tissue Location**  
Heart.

### **HAND1 Polyclonal Antibody - Protocols**

Provided below are standard protocols that you may find useful for product applications.

- [Western Blot](#)
- [Blocking Peptides](#)
- [Dot Blot](#)
- [Immunohistochemistry](#)
- [Immunofluorescence](#)
- [Immunoprecipitation](#)
- [Flow Cytometry](#)
- [Cell Culture](#)

### **HAND1 Polyclonal Antibody - Images**



### **HAND1 Polyclonal Antibody - Background**

Transcription factor that plays an essential role in both trophoblast-giant cells differentiation and in cardiac morphogenesis. In the adult, could be required for ongoing expression of cardiac-specific genes. Binds the DNA sequence 5'- NRTCTG-3' (non-canonical E-box) (By similarity).