

**EID-1 Polyclonal Antibody**  
**Catalog # AP69685****Specification**

---

**EID-1 Polyclonal Antibody - Product Information**

Application	WB, IHC-P, IF
Primary Accession	<a href="#">Q9Y6B2</a>
Reactivity	Human
Host	Rabbit
Clonality	Polyclonal

**EID-1 Polyclonal Antibody - Additional Information****Gene ID** 23741**Other Names**

EID1; C15orf3; CRI1; RBP21; PNAS-22; PTD014; EP300-interacting inhibitor of differentiation 1; 21 kDa pRb-associated protein; CREBBP/EP300 inhibitory protein 1; E1A-like inhibitor of differentiation 1; EID-1

**Dilution**

WB~~Western Blot: 1/500 - 1/2000. Immunohistochemistry: 1/100 - 1/300. Immunofluorescence: 1/200 - 1/1000. ELISA: 1/10000. Not yet tested in other applications.  
IHC-P~~N/A  
IF~~1:50~200

**Format**

Liquid in PBS containing 50% glycerol, 0.5% BSA and 0.09% (W/V) sodium azide.

**Storage Conditions**

-20°C

**EID-1 Polyclonal Antibody - Protein Information****Name** EID1 {ECO:0000312|EMBL:AAI14947.1}**Function**

Interacts with RB1 and EP300 and acts as a repressor of MYOD1 transactivation. Inhibits EP300 and CBP histone acetyltransferase activity. May be involved in coupling cell cycle exit to the transcriptional activation of genes required for cellular differentiation. May act as a candidate coinhibitory factor for NR0B2 that can be directly linked to transcription inhibitory mechanisms.

**Cellular Location**

Nucleus. Cytoplasm. Note=May shuttle between nucleus and cytoplasm.  
{ECO:0000250|UniProtKB:Q9DCR4, ECO:0000269|PubMed:11223246}

**Tissue Location**

Widely expressed. Most abundantly expressed in heart, skeletal muscle, pancreas, brain and

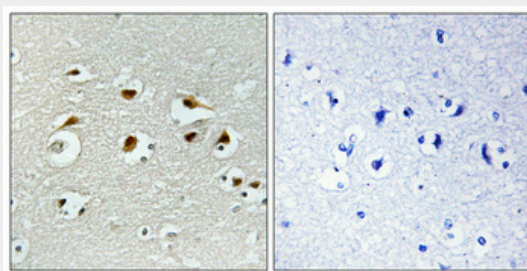
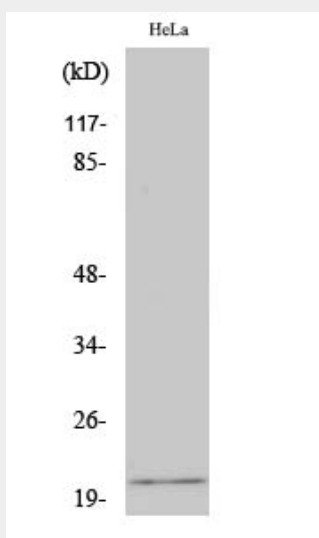
testis. Expressed at much lower levels in placenta and peripheral blood leukocyte. Barely detectable in lung. Also weakly expressed in lung carcinoma A-549 and various leukemia cell lines.

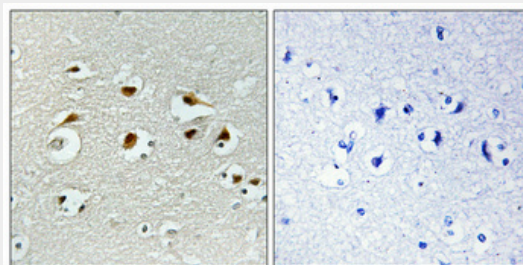
### EID-1 Polyclonal Antibody - Protocols

Provided below are standard protocols that you may find useful for product applications.

- [Western Blot](#)
- [Blocking Peptides](#)
- [Dot Blot](#)
- [Immunohistochemistry](#)
- [Immunofluorescence](#)
- [Immunoprecipitation](#)
- [Flow Cytometry](#)
- [Cell Culture](#)

### EID-1 Polyclonal Antibody - Images





#### **EID-1 Polyclonal Antibody - Background**

Interacts with RB1 and EP300 and acts as a repressor of MYOD1 transactivation. Inhibits EP300 and CBP histone acetyltransferase activity. May be involved in coupling cell cycle exit to the transcriptional activation of genes required for cellular differentiation. May act as a candidate coinhibitory factor for NR0B2 that can be directly linked to transcription inhibitory mechanisms.