

**EIF3L Polyclonal Antibody**  
**Catalog # AP69694****Specification****EIF3L Polyclonal Antibody - Product Information**

Application	WB
Primary Accession	<a href="#">Q9Y262</a>
Reactivity	Human, Mouse
Host	Rabbit
Clonality	Polyclonal

**EIF3L Polyclonal Antibody - Additional Information****Gene ID** 51386**Other Names**

EIF3L; EIF3EIP; EIF3S6IP; HSPC021; HSPC025; MSTP005; Eukaryotic translation initiation factor 3 subunit L; eIF3l; Eukaryotic translation initiation factor 3 subunit 6-interacting protein; Eukaryotic translation initiation factor 3 subunit E

**Dilution**

WB~~Western Blot: 1/500 - 1/2000. Immunofluorescence: 1/200 - 1/1000. ELISA: 1/20000. Not yet tested in other applications.

**Format**

Liquid in PBS containing 50% glycerol, 0.5% BSA and 0.09% (W/V) sodium azide.

**Storage Conditions**

-20°C

**EIF3L Polyclonal Antibody - Protein Information****Name** EIF3L {ECO:0000255|HAMAP-Rule:MF\_03011}**Function**

Component of the eukaryotic translation initiation factor 3 (eIF-3) complex, which is required for several steps in the initiation of protein synthesis (PubMed:<a href="http://www.uniprot.org/citations/17581632" target="\_blank">17581632</a>, PubMed:<a href="http://www.uniprot.org/citations/25849773" target="\_blank">25849773</a>, PubMed:<a href="http://www.uniprot.org/citations/27462815" target="\_blank">27462815</a>). The eIF-3 complex associates with the 40S ribosome and facilitates the recruitment of eIF-1, eIF-1A, eIF-2:GTP:methionyl- tRNAi and eIF-5 to form the 43S pre-initiation complex (43S PIC). The eIF-3 complex stimulates mRNA recruitment to the 43S PIC and scanning of the mRNA for AUG recognition. The eIF-3 complex is also required for disassembly and recycling of post-termination ribosomal complexes and subsequently prevents premature joining of the 40S and 60S ribosomal subunits prior to initiation (PubMed:<a href="http://www.uniprot.org/citations/17581632" target="\_blank">17581632</a>). The eIF-3 complex specifically targets and initiates translation of a subset of mRNAs involved in cell proliferation, including cell cycling, differentiation and

apoptosis, and uses different modes of RNA stem-loop binding to exert either translational activation or repression (PubMed:<a href="http://www.uniprot.org/citations/25849773" target="\_blank">25849773</a>).

#### **Cellular Location**

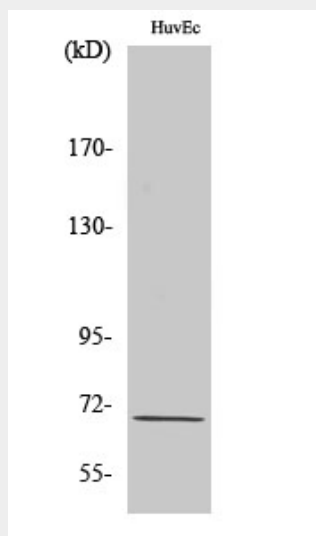
Cytoplasm {ECO:0000255|HAMAP-Rule:MF\_03011}.

### **eIF3L Polyclonal Antibody - Protocols**

Provided below are standard protocols that you may find useful for product applications.

- [Western Blot](#)
- [Blocking Peptides](#)
- [Dot Blot](#)
- [Immunohistochemistry](#)
- [Immunofluorescence](#)
- [Immunoprecipitation](#)
- [Flow Cytometry](#)
- [Cell Culture](#)

### **eIF3L Polyclonal Antibody - Images**



### **eIF3L Polyclonal Antibody - Background**

Component of the eukaryotic translation initiation factor 3 (eIF-3) complex, which is required for several steps in the initiation of protein synthesis (PubMed:17581632, PubMed:25849773, PubMed:27462815). The eIF-3 complex associates with the 40S ribosome and facilitates the recruitment of eIF-1, eIF-1A, eIF-2:GTP:methionyl-tRNA<sub>i</sub> and eIF-5 to form the 43S pre-initiation complex (43S PIC). The eIF-3 complex stimulates mRNA recruitment to the 43S PIC and scanning of the mRNA for AUG recognition. The eIF-3 complex is also required for disassembly and recycling of post-termination ribosomal complexes and subsequently prevents premature joining of the 40S and 60S ribosomal subunits prior to initiation (PubMed:17581632). The eIF-3 complex specifically targets and initiates translation of a subset of mRNAs involved in cell proliferation, including cell cycling, differentiation and apoptosis, and uses different modes of RNA stem-loop binding to exert either translational activation or repression (PubMed:25849773).