

ELOVL4 Polyclonal Antibody
Catalog # AP69721**Specification**

ELOVL4 Polyclonal Antibody - Product Information

Application	WB
Primary Accession	Q9GZR5
Reactivity	Human, Mouse
Host	Rabbit
Clonality	Polyclonal

ELOVL4 Polyclonal Antibody - Additional Information**Gene ID** 6785**Other Names**

ELOVL4; Elongation of very long chain fatty acids protein 4; 3-keto acyl-CoA synthase ELOVL4;
ELOVL fatty acid elongase 4; ELOVL FA elongase 4

Dilution

WB~~Western Blot: 1/500 - 1/2000. ELISA: 1/40000. Not yet tested in other applications.

Format

Liquid in PBS containing 50% glycerol, 0.5% BSA and 0.09% (W/V) sodium azide.

Storage Conditions

-20°C

ELOVL4 Polyclonal Antibody - Protein Information**Name** ELOVL4 {ECO:0000255|HAMAP-Rule:MF_03204}**Function**

Catalyzes the first and rate-limiting reaction of the four reactions that constitute the long-chain fatty acids elongation cycle. This endoplasmic reticulum-bound enzymatic process allows the addition of 2 carbons to the chain of long- and very long-chain fatty acids (VLCFAs) per cycle. Condensing enzyme that catalyzes the synthesis of very long chain saturated (VLC-SFA) and polyunsaturated (PUFA) fatty acids that are involved in multiple biological processes as precursors of membrane lipids and lipid mediators. May play a critical role in early brain and skin development.

Cellular Location

Endoplasmic reticulum membrane {ECO:0000255|HAMAP-Rule:MF_03204, ECO:0000269|PubMed:16036915, ECO:0000269|PubMed:20937905}; Multi-pass membrane protein {ECO:0000255|HAMAP-Rule:MF_03204}

Tissue Location

Expressed in the retina and at much lower level in the brain. Ubiquitous, highest expression in

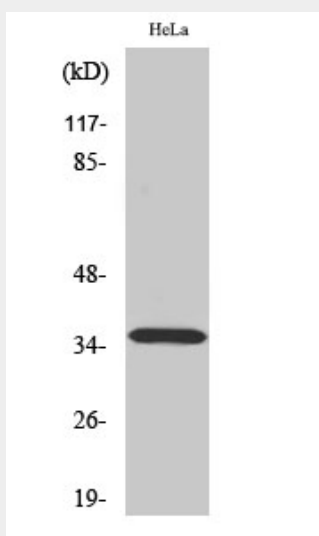
thymus, followed by testis, small intestine, ovary, and prostate. Little or no expression in heart, lung, liver, or leukocytes.

ELOVL4 Polyclonal Antibody - Protocols

Provided below are standard protocols that you may find useful for product applications.

- [Western Blot](#)
- [Blocking Peptides](#)
- [Dot Blot](#)
- [Immunohistochemistry](#)
- [Immunofluorescence](#)
- [Immunoprecipitation](#)
- [Flow Cytometry](#)
- [Cell Culture](#)

ELOVL4 Polyclonal Antibody - Images



ELOVL4 Polyclonal Antibody - Background

Catalyzes the first and rate-limiting reaction of the four reactions that constitute the long-chain fatty acids elongation cycle. This endoplasmic reticulum-bound enzymatic process allows the addition of 2 carbons to the chain of long- and very long-chain fatty acids (VLCFAs) per cycle. Condensing enzyme that specifically elongates C24:0 and C26:0 acyl-CoAs. May participate in the production of saturated and monounsaturated VLCFAs of different chain lengths that are involved in multiple biological processes as precursors of membrane lipids and lipid mediators. May play a critical role in early brain and skin development.