

ENaC β Polyclonal Antibody
Catalog # AP69734**Specification****ENaC β Polyclonal Antibody - Product Information**

Application	WB, IHC-P, IF
Primary Accession	P51168
Reactivity	Human, Mouse, Rat
Host	Rabbit
Clonality	Polyclonal

ENaC β Polyclonal Antibody - Additional Information**Gene ID** 6338**Other Names**

SCNN1B; Amiloride-sensitive sodium channel subunit beta; Beta-NaCH; Epithelial Na(+) channel subunit beta; Beta-ENaC; ENaCB; Nonvoltage-gated sodium channel 1 subunit beta; SCNEB

DilutionWB~~WB 1:500-2000 Immunohistochemistry: 1/100 - 1/300. Immunofluorescence: 1/200 - 1/1000. ELISA: 1/20000. Not yet tested in other applications.
IHC-P~~N/A
IF~~1:50~200**Format**

Liquid in PBS containing 50% glycerol, 0.5% BSA and 0.09% (W/V) sodium azide.

Storage Conditions

-20°C

ENaC β Polyclonal Antibody - Protein Information**Name** SCNN1B {ECO:0000303|PubMed:7490094, ECO:0000312|HGNC:HGNC:10600}**Function**

This is one of the three pore-forming subunits of the heterotrimeric epithelial sodium channel (ENaC), a critical regulator of sodium balance and fluid homeostasis (PubMed:30251954, PubMed:32729833, PubMed:7762608, PubMed:9792722). ENaC operates in epithelial tissues, where it mediates the electrodiffusion of sodium ions from extracellular fluid through the apical membrane of cells, with water following osmotically (PubMed:24124190). It plays a key role in maintaining sodium homeostasis through electrogenic sodium reabsorption in the kidneys (PubMed:12107247). Additionally, ENaC is essential for airway surface liquid homeostasis, which is crucial for proper

mucus clearance (PubMed:24124190).

Cellular Location

Apical cell membrane; Multi-pass membrane protein. Cytoplasmic vesicle membrane {ECO:0000250|UniProtKB:P37090}; Multi-pass membrane protein

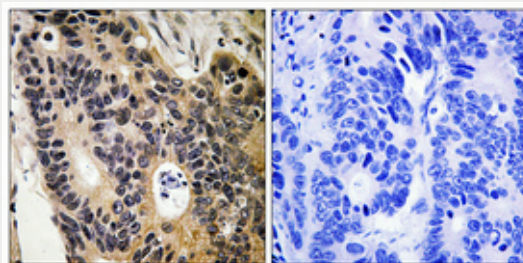
Tissue Location

Detected in placenta, lung and kidney (PubMed:7762608). Expressed in kidney (at protein level) (PubMed:22207244).

ENaC β Polyclonal Antibody - Protocols

Provided below are standard protocols that you may find useful for product applications.

- [Western Blot](#)
- [Blocking Peptides](#)
- [Dot Blot](#)
- [Immunohistochemistry](#)
- [Immunofluorescence](#)
- [Immunoprecipitation](#)
- [Flow Cytometry](#)
- [Cell Culture](#)

ENaC β Polyclonal Antibody - Images**ENaC β Polyclonal Antibody - Background**

Sodium permeable non-voltage-sensitive ion channel inhibited by the diuretic amiloride. Mediates the electrodiffusion of the luminal sodium (and water, which follows osmotically) through the apical membrane of epithelial cells. Plays an essential role in electrolyte and blood pressure homeostasis, but also in airway surface liquid homeostasis, which is important for proper clearance of mucus. Controls the reabsorption of sodium in kidney, colon, lung and sweat glands. Also plays a role in taste perception.