

Ephrin-B3 Polyclonal Antibody
Catalog # AP69779**Specification**

Ephrin-B3 Polyclonal Antibody - Product Information

Application	WB, IHC-P
Primary Accession	Q15768
Reactivity	Human, Mouse, Rat
Host	Rabbit
Clonality	Polyclonal

Ephrin-B3 Polyclonal Antibody - Additional Information**Gene ID** 1949**Other Names**

EFNB3; EPLG8; LERK8; Ephrin-B3; EPH-related receptor transmembrane ligand ELK-L3; EPH-related receptor tyrosine kinase ligand 8; LERK-8

Dilution

WB~~Western Blot: 1/500 - 1/2000. Immunohistochemistry: 1/100 - 1/300. ELISA: 1/20000. Not yet tested in other applications.

IHC-P~~N/A

Format

Liquid in PBS containing 50% glycerol, 0.5% BSA and 0.09% (W/V) sodium azide.

Storage Conditions

-20°C

Ephrin-B3 Polyclonal Antibody - Protein Information**Name** EFNB3**Synonyms** EPLG8, LERK8**Function**

Cell surface transmembrane ligand for Eph receptors, a family of receptor tyrosine kinases which are crucial for migration, repulsion and adhesion during neuronal, vascular and epithelial development. Binds promiscuously Eph receptors residing on adjacent cells, leading to contact-dependent bidirectional signaling into neighboring cells. The signaling pathway downstream of the receptor is referred to as forward signaling while the signaling pathway downstream of the ephrin ligand is referred to as reverse signaling. May play a pivotal role in forebrain function. Binds to, and induce the collapse of, commissural axons/growth cones in vitro. May play a role in constraining the orientation of longitudinally projecting axons (By similarity).

Cellular Location

Membrane; Single-pass type I membrane protein.

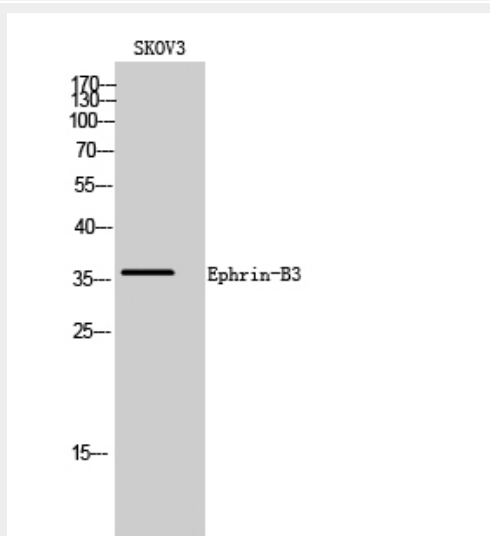
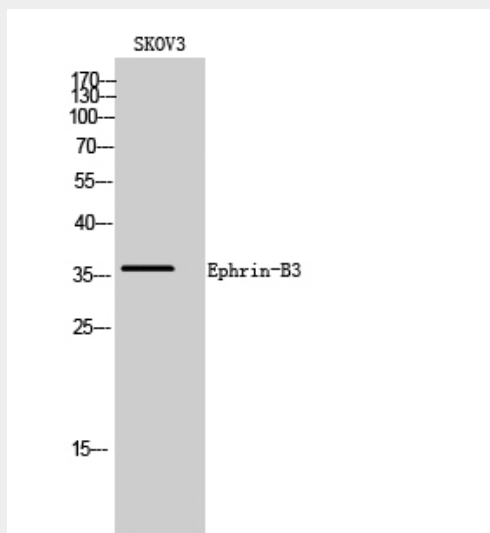
Tissue Location

Highly expressed in brain; expressed in embryonic floor plate, roof plate and hindbrain segments

Ephrin-B3 Polyclonal Antibody - Protocols

Provided below are standard protocols that you may find useful for product applications.

- [Western Blot](#)
- [Blocking Peptides](#)
- [Dot Blot](#)
- [Immunohistochemistry](#)
- [Immunofluorescence](#)
- [Immunoprecipitation](#)
- [Flow Cytometry](#)
- [Cell Culture](#)

Ephrin-B3 Polyclonal Antibody - Images

Ephrin-B3 Polyclonal Antibody - Background

Cell surface transmembrane ligand for Eph receptors, a family of receptor tyrosine kinases which are crucial for migration, repulsion and adhesion during neuronal, vascular and epithelial development. Binds promiscuously Eph receptors residing on adjacent cells, leading to contact-dependent bidirectional signaling into neighboring cells. The signaling pathway downstream of the receptor is referred to as forward signaling while the signaling pathway downstream of the ephrin ligand is referred to as reverse signaling. May play a pivotal role in forebrain function. Binds to, and induce the collapse of, commissural axons/growth cones in vitro. May play a role in constraining the orientation of longitudinally projecting axons (By similarity).