

**Eps8L2 Polyclonal Antibody**  
**Catalog # AP69782****Specification**

---

**Eps8L2 Polyclonal Antibody - Product Information**

Application	WB, IHC-P, IF
Primary Accession	<a href="#">Q9H6S3</a>
Reactivity	Human, Mouse
Host	Rabbit
Clonality	Polyclonal

**Eps8L2 Polyclonal Antibody - Additional Information****Gene ID** 64787**Other Names**

EPS8L2; EPS8R2; PP13181; Epidermal growth factor receptor kinase substrate 8-like protein 2; EPS8-like protein 2; Epidermal growth factor receptor pathway substrate 8-related protein 2; EPS8-related protein 2

**Dilution**

WB~~Western Blot: 1/500 - 1/2000. Immunohistochemistry: 1/100 - 1/300. Immunofluorescence: 1/200 - 1/1000. ELISA: 1/40000. Not yet tested in other applications.  
IHC-P~~N/A  
IF~~1:50~200

**Format**

Liquid in PBS containing 50% glycerol, 0.5% BSA and 0.09% (W/V) sodium azide.

**Storage Conditions**

-20°C

**Eps8L2 Polyclonal Antibody - Protein Information****Name** EPS8L2**Synonyms** EPS8R2**Function**

Stimulates guanine exchange activity of SOS1. May play a role in membrane ruffling and remodeling of the actin cytoskeleton. In the cochlea, is required for stereocilia maintenance in adult hair cells (By similarity).

**Cellular Location**

Cytoplasm. Cell projection, stereocilium {ECO:0000250|UniProtKB:Q99K30}. Note=Localizes at the tips of the stereocilia of the inner and outer hair cells {ECO:0000250|UniProtKB:Q99K30}

**Tissue Location**

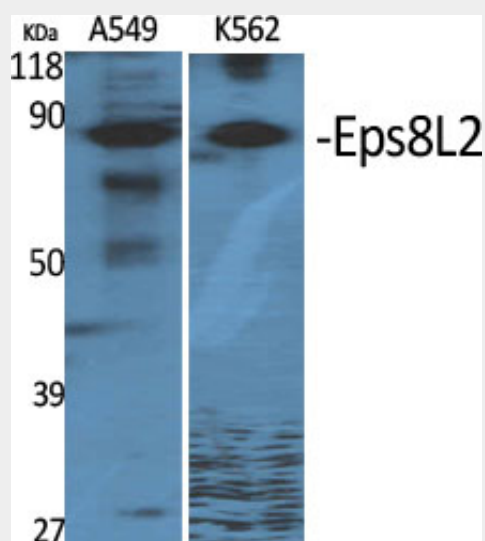
Detected in fibroblasts and placenta.

### Eps8L2 Polyclonal Antibody - Protocols

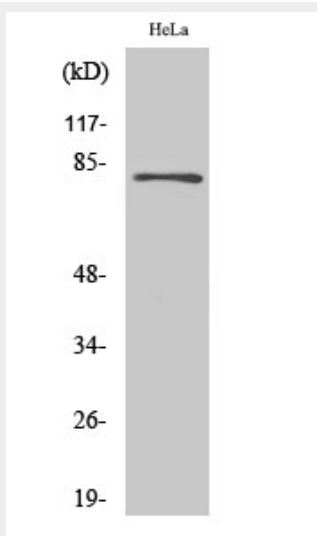
Provided below are standard protocols that you may find useful for product applications.

- [Western Blot](#)
- [Blocking Peptides](#)
- [Dot Blot](#)
- [Immunohistochemistry](#)
- [Immunofluorescence](#)
- [Immunoprecipitation](#)
- [Flow Cytometry](#)
- [Cell Culture](#)

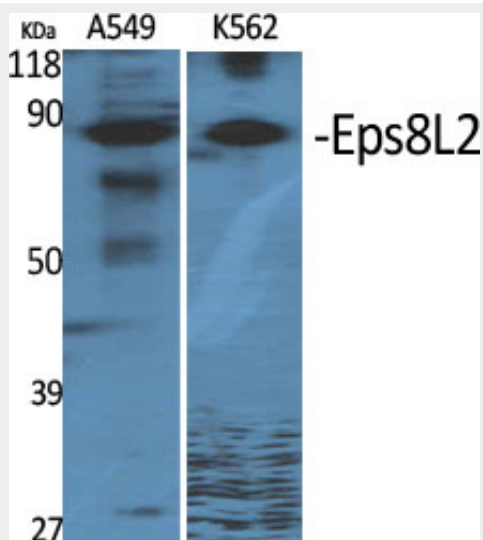
### Eps8L2 Polyclonal Antibody - Images



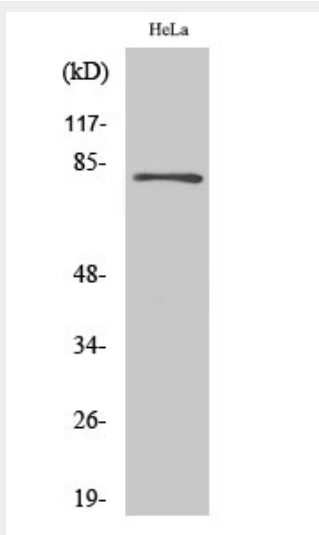
Western Blot analysis of various cells using Eps8L2 Polyclonal Antibody



Western Blot analysis of HuvEc cells using Eps8L2 Polyclonal Antibody



Western Blot analysis of various cells using Eps8L2 Polyclonal Antibody



Western Blot analysis of HuvEc cells using Eps8L2 Polyclonal Antibody

### Eps8L2 Polyclonal Antibody - Background

Stimulates guanine exchange activity of SOS1. May play a role in membrane ruffling and remodeling of the actin cytoskeleton. In the cochlea, is required for stereocilia maintenance in adult hair cells (By similarity).