

Epsin 2 Polyclonal Antibody
Catalog # AP69785**Specification**

Epsin 2 Polyclonal Antibody - Product Information

Application	WB, IHC-P
Primary Accession	O95208
Reactivity	Human, Mouse, Rat
Host	Rabbit
Clonality	Polyclonal

Epsin 2 Polyclonal Antibody - Additional Information**Gene ID** 22905**Other Names**

EPN2; KIAA1065; Epsin-2; EPS-15-interacting protein 2

Dilution

WB~~Western Blot: 1/500 - 1/2000. Immunohistochemistry: 1/100 - 1/300. ELISA: 1/20000. Not yet tested in other applications.

IHC-P~~N/A

Format

Liquid in PBS containing 50% glycerol, 0.5% BSA and 0.09% (W/V) sodium azide.

Storage Conditions

-20°C

Epsin 2 Polyclonal Antibody - Protein Information**Name** EPN2**Synonyms** KIAA1065**Function**

Plays a role in the formation of clathrin-coated invaginations and endocytosis.

Cellular Location

Cytoplasm. Cytoplasmic vesicle, clathrin-coated vesicle. Note=In punctate structures throughout the cell, associated with clathrin-coated vesicles, and particularly concentrated in the region of the Golgi complex

Tissue Location

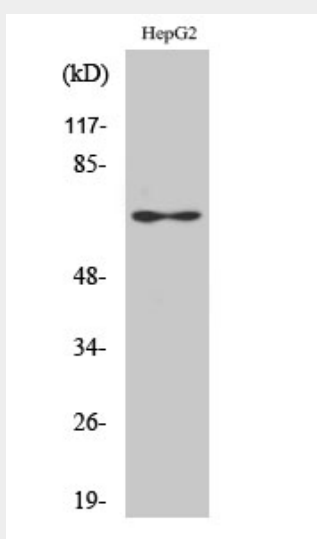
Highest expression is found in brain. Detected at lower levels in lung and liver.

Epsin 2 Polyclonal Antibody - Protocols

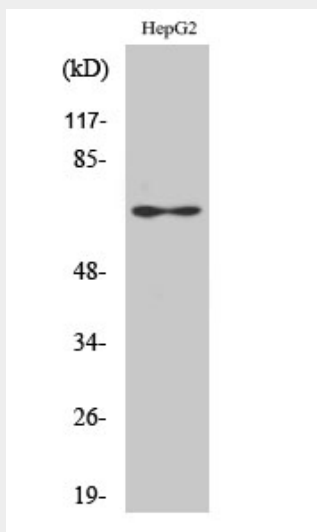
Provided below are standard protocols that you may find useful for product applications.

- [Western Blot](#)
- [Blocking Peptides](#)
- [Dot Blot](#)
- [Immunohistochemistry](#)
- [Immunofluorescence](#)
- [Immunoprecipitation](#)
- [Flow Cytometry](#)
- [Cell Culture](#)

Epsin 2 Polyclonal Antibody - Images



Western Blot analysis of various cells using Epsin 2 Polyclonal Antibody diluted at 1:1000



Western Blot analysis of various cells using Epsin 2 Polyclonal Antibody diluted at 1:1000

Epsin 2 Polyclonal Antibody - Background

Plays a role in the formation of clathrin-coated invaginations and endocytosis.