

ERdj3 Polyclonal Antibody
Catalog # AP69799**Specification**

ERdj3 Polyclonal Antibody - Product Information

Application	WB, IHC-P
Primary Accession	Q9UBS4
Reactivity	Human, Mouse, Rat
Host	Rabbit
Clonality	Polyclonal

ERdj3 Polyclonal Antibody - Additional Information**Gene ID** 51726**Other Names**

DNAJB11; EDJ; ERJ3; HDJ9; PSEC0121; DnaJ homolog subfamily B member 11; APOBEC1-binding protein 2; ABBP-2; DnaJ protein homolog 9; ER-associated DNAJ; ER-associated Hsp40 co-chaperone; ER-associated dnaJ protein 3; ERdj3; ERJ3p; HEDJ; Human

Dilution

WB~~Western Blot: 1/500 - 1/2000. Immunohistochemistry: 1/100 - 1/300. ELISA: 1/20000. Not yet tested in other applications.
IHC-P~~N/A

Format

Liquid in PBS containing 50% glycerol, 0.5% BSA and 0.09% (W/V) sodium azide.

Storage Conditions

-20°C

ERdj3 Polyclonal Antibody - Protein Information**Name** DNAJB11**Synonyms** EDJ, ERJ3, HDJ9**Function**

As a co-chaperone for HSPA5 it is required for proper folding, trafficking or degradation of proteins (PubMed:10827079, PubMed:15525676, PubMed:29706351). Binds directly to both unfolded proteins that are substrates for ERAD and nascent unfolded peptide chains, but dissociates from the HSPA5-unfolded protein complex before folding is completed (PubMed:15525676). May help recruiting HSPA5 and other chaperones to the substrate. Stimulates HSPA5 ATPase activity (PubMed:10827079). It is necessary for maturation and correct trafficking of PKD1

(PubMed:29706351).

Cellular Location

Endoplasmic reticulum lumen Note=Associated with the ER membrane in a C-terminally epitope-tagged construct

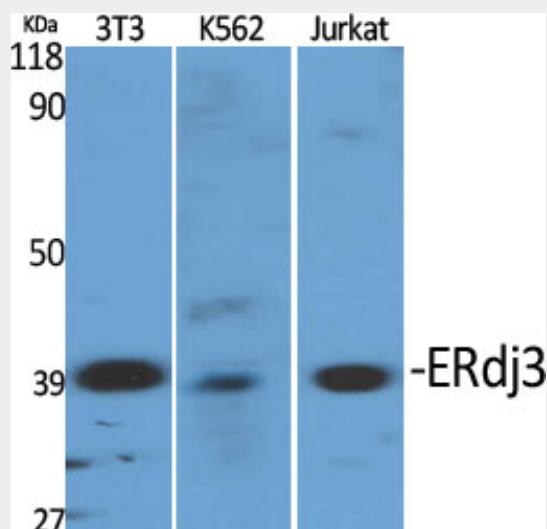
Tissue Location

Widely expressed.

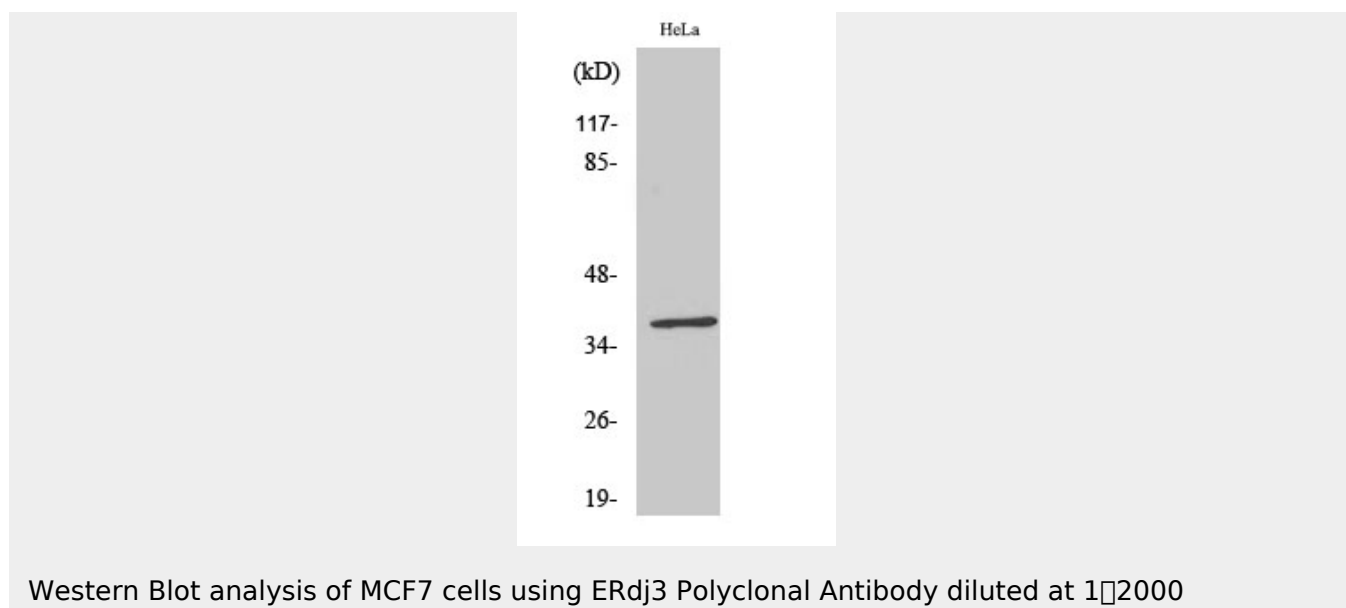
ERdj3 Polyclonal Antibody - Protocols

Provided below are standard protocols that you may find useful for product applications.

- [Western Blot](#)
- [Blocking Peptides](#)
- [Dot Blot](#)
- [Immunohistochemistry](#)
- [Immunofluorescence](#)
- [Immunoprecipitation](#)
- [Flow Cytometry](#)
- [Cell Culture](#)

ERdj3 Polyclonal Antibody - Images

Western Blot analysis of various cells using ERdj3 Polyclonal Antibody diluted at 1:2000



ERdj3 Polyclonal Antibody - Background

As a co-chaperone for HSPA5 it is required for proper folding, trafficking or degradation of proteins (PubMed:10827079, PubMed:15525676, PubMed:29706351). Binds directly to both unfolded proteins that are substrates for ERAD and nascent unfolded peptide chains, but dissociates from the HSPA5-unfolded protein complex before folding is completed (PubMed:15525676). May help recruiting HSPA5 and other chaperones to the substrate. Stimulates HSPA5 ATPase activity (PubMed:10827079). It is necessary for maturation and correct trafficking of PKD1 (PubMed:29706351).