

ERK 3 Polyclonal Antibody
Catalog # AP69811**Specification**

ERK 3 Polyclonal Antibody - Product Information

Application	WB, IHC-P, IF
Primary Accession	Q16659
Reactivity	Human, Mouse, Rat
Host	Rabbit
Clonality	Polyclonal

ERK 3 Polyclonal Antibody - Additional Information**Gene ID** 5597**Other Names**

MAPK6; ERK3; PRKM6; Mitogen-activated protein kinase 6; MAP kinase 6; MAPK 6; Extracellular signal-regulated kinase 3; ERK-3; MAP kinase isoform p97; p97-MAPK

Dilution

WB~~Western Blot: 1/500 - 1/2000. Immunohistochemistry: 1/100 - 1/300. Immunofluorescence: 1/200 - 1/1000. ELISA: 1/10000. Not yet tested in other applications.

IHC-P~~N/A

IF~~1:50~200

Format

Liquid in PBS containing 50% glycerol, 0.5% BSA and 0.09% (W/V) sodium azide.

Storage Conditions

-20°C

ERK 3 Polyclonal Antibody - Protein Information**Name** MAPK6**Synonyms** ERK3, PRKM6**Function**

Atypical MAPK protein. Phosphorylates microtubule-associated protein 2 (MAP2) and MAPKAPK5. The precise role of the complex formed with MAPKAPK5 is still unclear, but the complex follows a complex set of phosphorylation events: upon interaction with atypical MAPKAPK5, ERK3/MAPK6 is phosphorylated at Ser-189 and then mediates phosphorylation and activation of MAPKAPK5, which in turn phosphorylates ERK3/MAPK6. May promote entry in the cell cycle (By similarity).

Cellular Location

Cytoplasm. Nucleus. Note=Translocates to the cytoplasm following interaction with MAPKAPK5

Tissue Location

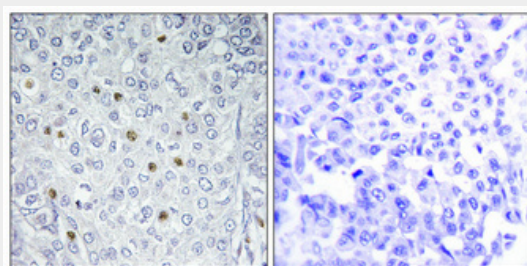
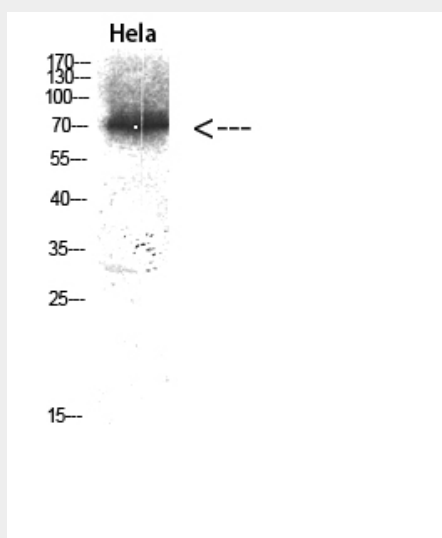
Highest expression in the skeletal muscle, followed by the brain. Also found in heart, placenta, lung, liver, pancreas, kidney and skin fibroblasts

ERK 3 Polyclonal Antibody - Protocols

Provided below are standard protocols that you may find useful for product applications.

- [Western Blot](#)
- [Blocking Peptides](#)
- [Dot Blot](#)
- [Immunohistochemistry](#)
- [Immunofluorescence](#)
- [Immunoprecipitation](#)
- [Flow Cytometry](#)
- [Cell Culture](#)

ERK 3 Polyclonal Antibody - Images



ERK 3 Polyclonal Antibody - Background

Atypical MAPK protein. Phosphorylates microtubule-associated protein 2 (MAP2) and MAPKAPK5. The precise role of the complex formed with MAPKAPK5 is still unclear, but the complex follows a complex set of phosphorylation events: upon interaction with atypical MAPKAPK5, ERK3/MAPK6 is phosphorylated at Ser-189 and then mediates phosphorylation and activation of MAPKAPK5, which

in turn phosphorylates ERK3/MAPK6. May promote entry in the cell cycle (By similarity).