

Exo1 Polyclonal Antibody
Catalog # AP69829**Specification**

Exo1 Polyclonal Antibody - Product Information

Application	WB, IF
Primary Accession	Q9UQ84
Reactivity	Human, Mouse
Host	Rabbit
Clonality	Polyclonal

Exo1 Polyclonal Antibody - Additional Information**Gene ID** 9156**Other Names**

EXO1; EXOI; HEX1; Exonuclease 1; hExo1; Exonuclease I; hExoI

Dilution

WB~~Western Blot: 1/500 - 1/2000. Immunofluorescence: 1/200 - 1/1000. ELISA: 1/10000. Not yet tested in other applications.

IF~~1:50~200

Format

Liquid in PBS containing 50% glycerol, 0.5% BSA and 0.09% (W/V) sodium azide.

Storage Conditions

-20°C

Exo1 Polyclonal Antibody - Protein Information**Name** EXO1**Synonyms** EXOI, HEX1**Function**

5'→3' double-stranded DNA exonuclease which may also possess a cryptic 3'→5' double-stranded DNA exonuclease activity. Functions in DNA mismatch repair (MMR) to excise mismatch-containing DNA tracts directed by strand breaks located either 5' or 3' to the mismatch. Also exhibits endonuclease activity against 5'-overhanging flap structures similar to those generated by displacement synthesis when DNA polymerase encounters the 5'-end of a downstream Okazaki fragment. Required for somatic hypermutation (SHM) and class switch recombination (CSR) of immunoglobulin genes. Essential for male and female meiosis.

Cellular Location

Nucleus Note=Colocalizes with PCNA to discrete nuclear foci in S-phase

Tissue Location

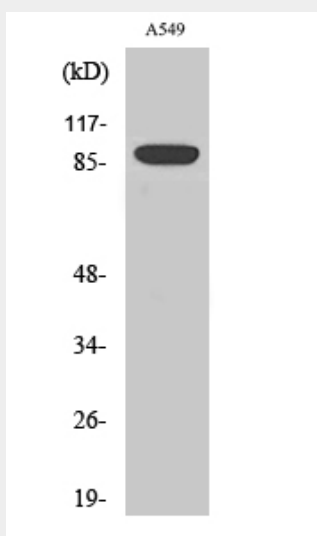
Highly expressed in bone marrow, testis and thymus. Expressed at lower levels in colon, lymph nodes, ovary, placenta, prostate, small intestine, spleen and stomach

Exo1 Polyclonal Antibody - Protocols

Provided below are standard protocols that you may find useful for product applications.

- [Western Blot](#)
- [Blocking Peptides](#)
- [Dot Blot](#)
- [Immunohistochemistry](#)
- [Immunofluorescence](#)
- [Immunoprecipitation](#)
- [Flow Cytometry](#)
- [Cell Culture](#)

Exo1 Polyclonal Antibody - Images



Exo1 Polyclonal Antibody - Background

5'->3' double-stranded DNA exonuclease which may also possess a cryptic 3'->5' double-stranded DNA exonuclease activity. Functions in DNA mismatch repair (MMR) to excise mismatch-containing DNA tracts directed by strand breaks located either 5' or 3' to the mismatch. Also exhibits endonuclease activity against 5'-overhanging flap structures similar to those generated by displacement synthesis when DNA polymerase encounters the 5'-end of a downstream Okazaki fragment. Required for somatic hypermutation (SHM) and class switch recombination (CSR) of immunoglobulin genes. Essential for male and female meiosis.