

CD28 Antibody (C-term)
Affinity Purified Rabbit Polyclonal Antibody (Pab)
Catalog # AP6982B**Specification**

CD28 Antibody (C-term) - Product Information

Application	IF, WB,E
Primary Accession	P10747
Other Accession	P42069
Reactivity	Human
Predicted	Rabbit
Host	Rabbit
Clonality	Polyclonal
Isotype	Rabbit IgG
Calculated MW	25066
Antigen Region	182-208

CD28 Antibody (C-term) - Additional Information**Gene ID** 940**Other Names**

T-cell-specific surface glycoprotein CD28, TP44, CD28, CD28

Target/Specificity

This CD28 antibody is generated from rabbits immunized with a KLH conjugated synthetic peptide between 182-208 amino acids from the C-terminal region of human CD28.

Dilution

IF~~1:10~50

WB~~1:1000

E~~Use at an assay dependent concentration.

Format

Purified polyclonal antibody supplied in PBS with 0.09% (W/V) sodium azide. This antibody is purified through a protein A column, followed by peptide affinity purification.

Storage

Maintain refrigerated at 2-8°C for up to 2 weeks. For long term storage store at -20°C in small aliquots to prevent freeze-thaw cycles.

Precautions

CD28 Antibody (C-term) is for research use only and not for use in diagnostic or therapeutic procedures.

CD28 Antibody (C-term) - Protein Information**Name** CD28

Function Receptor that plays a role in T-cell activation, proliferation, survival and the maintenance of immune homeostasis (PubMed:[1650475](#), PubMed:[7568038](#)). Functions not only as an amplifier of TCR signals but delivers unique signals that control intracellular biochemical events that alter the gene expression program of T-cells (PubMed:[24665965](#)). Stimulation upon engagement of its cognate ligands CD80 or CD86 increases proliferation and expression of various cytokines in particular IL2 production in both CD4(+) and CD8(+) T-cell subsets (PubMed:[12196291](#), PubMed:[1650475](#), PubMed:[35397202](#)). Mechanistically, ligation induces recruitment of protein kinase C- theta/PRKCQ and GRB2 leading to NF-kappa-B activation via both PI3K/Akt-dependent and -independent pathways (PubMed:[21964608](#), PubMed:[24665965](#), PubMed:[7568038](#)). In conjunction with TCR/CD3 ligation and CD40L costimulation, enhances the production of IL4 and IL10 in T- cells (PubMed:[8617933](#)).

Cellular Location

Cell membrane; Single-pass type I membrane protein

Tissue Location

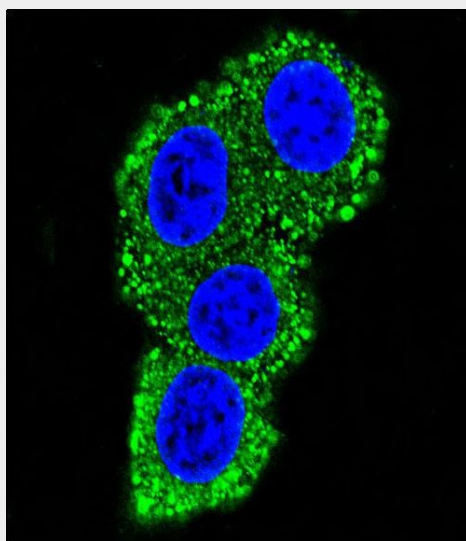
Expressed in T-cells and plasma cells, but not in less mature B-cells

CD28 Antibody (C-term) - Protocols

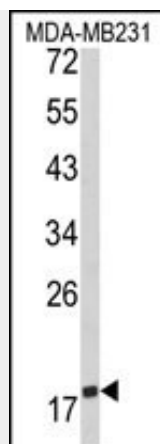
Provided below are standard protocols that you may find useful for product applications.

- [Western Blot](#)
- [Blocking Peptides](#)
- [Dot Blot](#)
- [Immunohistochemistry](#)
- [Immunofluorescence](#)
- [Immunoprecipitation](#)
- [Flow Cytometry](#)
- [Cell Culture](#)

CD28 Antibody (C-term) - Images



Confocal immunofluorescent analysis of CD28 Antibody (C-term) (Cat. #AP6982b) with HeLa cell followed by Alexa Fluor® 489-conjugated goat anti-rabbit IgG (green). DAPI was used to stain the cell nuclear (blue).



Western blot analysis of CD28 Antibody (C-term) (Cat. #AP6982b) in MDA-MB231 cell line lysates (35ug/lane). CD28 (arrow) was detected using the purified Pab.

CD28 Antibody (C-term) - Background

CD28 costimulation is essential for CD4-positive T-cell proliferation, survival, interleukin-2 production, and T-helper type-2 (Th2) development.

CD28 Antibody (C-term) - References

Zocchi, M.R., et.al., Eur. J. Cancer 28A (4-5), 749-754 (1992)