

Ezrin Polyclonal Antibody
Catalog # AP69833**Specification**

Ezrin Polyclonal Antibody - Product Information

Application	WB
Primary Accession	P15311
Reactivity	Human, Mouse, Rat
Host	Rabbit
Clonality	Polyclonal

Ezrin Polyclonal Antibody - Additional Information**Gene ID** 7430**Other Names**

EZR; VIL2; Ezrin; Cytovillin; Villin-2; p81

Dilution

WB~~Western Blot: 1/500 - 1/2000. ELISA: 1/40000. Not yet tested in other applications.

Format

Liquid in PBS containing 50% glycerol, 0.5% BSA and 0.09% (W/V) sodium azide.

Storage Conditions

-20°C

Ezrin Polyclonal Antibody - Protein Information**Name** EZR**Synonyms** VIL2**Function**

Probably involved in connections of major cytoskeletal structures to the plasma membrane. In epithelial cells, required for the formation of microvilli and membrane ruffles on the apical pole. Along with PLEKHG6, required for normal macropinocytosis.

Cellular Location

Apical cell membrane; Peripheral membrane protein; Cytoplasmic side. Cell projection. Cell projection, microvillus membrane; Peripheral membrane protein; Cytoplasmic side. Cell projection, ruffle membrane; Peripheral membrane protein; Cytoplasmic side. Cytoplasm, cell cortex. Cytoplasm, cytoskeleton. Cell projection, microvillus {ECO:0000250|UniProtKB:P26040}. Note=Localization to the apical membrane of parietal cells depends on the interaction with PALS1 Localizes to cell extensions and peripheral processes of astrocytes (By similarity). Microvillar peripheral membrane protein (cytoplasmic side). {ECO:0000250|UniProtKB:P31977}

Tissue Location

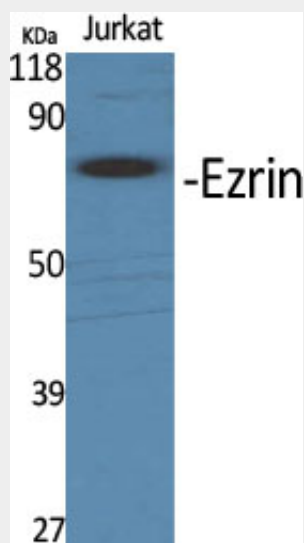
Expressed in cerebral cortex, basal ganglia, hippocampus, hypophysis, and optic nerve. Weakly expressed in brain stem and diencephalon. Stronger expression was detected in gray matter of frontal lobe compared to white matter (at protein level). Component of the microvilli of intestinal epithelial cells. Preferentially expressed in astrocytes of hippocampus, frontal cortex, thalamus, parahippocampal cortex, amygdala, insula, and corpus callosum. Not detected in neurons in most tissues studied

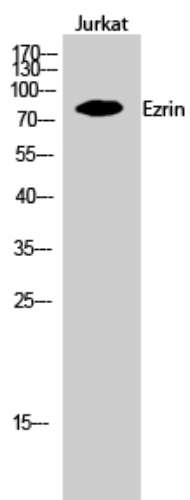
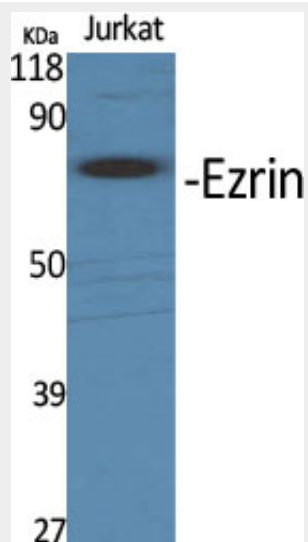
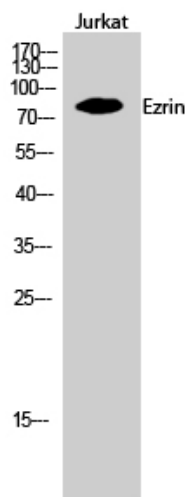
Ezrin Polyclonal Antibody - Protocols

Provided below are standard protocols that you may find useful for product applications.

- [Western Blot](#)
- [Blocking Peptides](#)
- [Dot Blot](#)
- [Immunohistochemistry](#)
- [Immunofluorescence](#)
- [Immunoprecipitation](#)
- [Flow Cytometry](#)
- [Cell Culture](#)

Ezrin Polyclonal Antibody - Images





Ezrin Polyclonal Antibody - Background

Probably involved in connections of major cytoskeletal structures to the plasma membrane. In epithelial cells, required for the formation of microvilli and membrane ruffles on the apical pole. Along with PLEKHG6, required for normal macropinocytosis.