

**FGF-13 Polyclonal Antibody**  
**Catalog # AP69879****Specification**

---

**FGF-13 Polyclonal Antibody - Product Information**

Application	WB
Primary Accession	<a href="#">Q92913</a>
Reactivity	Human, Mouse, Rat
Host	Rabbit
Clonality	Polyclonal

**FGF-13 Polyclonal Antibody - Additional Information****Gene ID** 2258**Other Names**

FGF13; FHF2; Fibroblast growth factor 13; FGF-13; Fibroblast growth factor homologous factor 2; FHF-2

**Dilution**

WB~~Western Blot: 1/500 - 1/2000. ELISA: 1/5000. Not yet tested in other applications.

**Format**

Liquid in PBS containing 50% glycerol, 0.5% BSA and 0.09% (W/V) sodium azide.

**Storage Conditions**

-20°C

**FGF-13 Polyclonal Antibody - Protein Information****Name** FGF13 ([HGNC:3670](#))**Synonyms** FHF2**Function**

Microtubule-binding protein which directly binds tubulin and is involved in both polymerization and stabilization of microtubules (By similarity). Through its action on microtubules, may participate in the refinement of axons by negatively regulating axonal and leading processes branching (By similarity). Plays a crucial role in neuron polarization and migration in the cerebral cortex and the hippocampus (By similarity). Regulates voltage-gated sodium channel transport and function (PubMed:<a href="http://www.uniprot.org/citations/15282281" target="\_blank">15282281</a>, PubMed:<a href="http://www.uniprot.org/citations/33245860" target="\_blank">33245860</a>, PubMed:<a href="http://www.uniprot.org/citations/36696443" target="\_blank">36696443</a>). May also play a role in MAPK signaling (By similarity). Required for the development of axonal initial segment-targeting inhibitory GABAergic synapses made by chandelier neurons (By similarity).

**Cellular Location**

[Isoform 1]: Nucleus [Isoform 3]: Cytoplasm. Nucleus [Isoform 5]: Cytoplasm  
{ECO:0000250|UniProtKB:P61329}. Nucleus {ECO:0000250|UniProtKB:P61329}

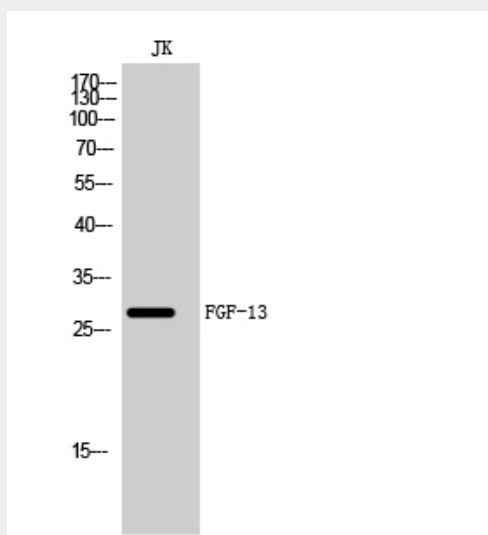
**Tissue Location**

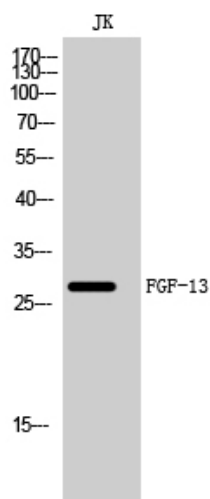
Ubiquitously expressed. Predominantly expressed in the nervous system.

**FGF-13 Polyclonal Antibody - Protocols**

Provided below are standard protocols that you may find useful for product applications.

- [Western Blot](#)
- [Blocking Peptides](#)
- [Dot Blot](#)
- [Immunohistochemistry](#)
- [Immunofluorescence](#)
- [Immunoprecipitation](#)
- [Flow Cytometry](#)
- [Cell Culture](#)

**FGF-13 Polyclonal Antibody - Images**



### FGF-13 Polyclonal Antibody - Background

Microtubule-binding protein which directly binds tubulin and is involved in both polymerization and stabilization of microtubules. Through its action on microtubules, may participate to the refinement of axons by negatively regulating axonal and leading processes branching. Plays a crucial role in neuron polarization and migration in the cerebral cortex and the hippocampus.