

**Fibulin-5 Polyclonal Antibody**  
**Catalog # AP69893****Specification**

---

**Fibulin-5 Polyclonal Antibody - Product Information**

Application	WB
Primary Accession	<a href="#">Q9UBX5</a>
Reactivity	Human, Mouse, Rat
Host	Rabbit
Clonality	Polyclonal

**Fibulin-5 Polyclonal Antibody - Additional Information****Gene ID** 10516**Other Names**

FBLN5; DANCE; Fibulin-5; FIBL-5; Developmental arteries and neural crest EGF-like protein; Dance; Urine p50 protein; UP50

**Dilution**

WB~~Western Blot: 1/500 - 1/2000. ELISA: 1/5000. Not yet tested in other applications.

**Format**

Liquid in PBS containing 50% glycerol, 0.5% BSA and 0.09% (W/V) sodium azide.

**Storage Conditions**

-20°C

**Fibulin-5 Polyclonal Antibody - Protein Information****Name** FBLN5**Synonyms** DANCE**Function**

Essential for elastic fiber formation, is involved in the assembly of continuous elastin (ELN) polymer and promotes the interaction of microfibrils and ELN (PubMed:<a href="http://www.uniprot.org/citations/18185537" target="\_blank">18185537</a>). Stabilizes and organizes elastic fibers in the skin, lung and vasculature (By similarity). Promotes adhesion of endothelial cells through interaction of integrins and the RGD motif. Vascular ligand for integrin receptors which may play a role in vascular development and remodeling (PubMed:<a href="http://www.uniprot.org/citations/10428823" target="\_blank">10428823</a>). May act as an adapter that mediates the interaction between FBN1 and ELN (PubMed:<a href="http://www.uniprot.org/citations/17255108" target="\_blank">17255108</a>).

**Cellular Location**

Secreted. Secreted, extracellular space, extracellular matrix. Note=co-localizes with ELN in elastic fibers.

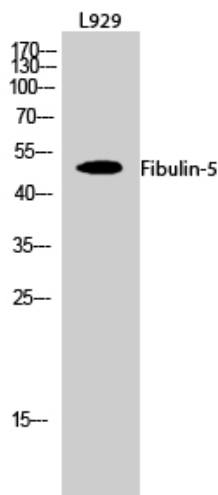
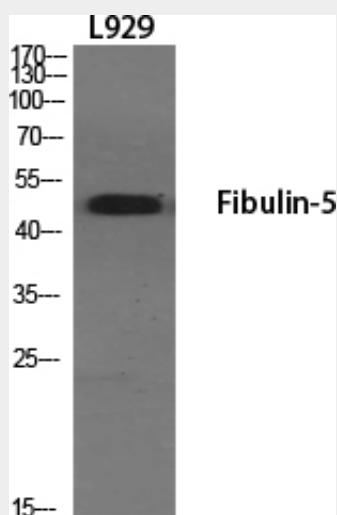
**Tissue Location**

Expressed in skin fibroblasts (at protein level) (PubMed:17035250). Expressed predominantly in heart, ovary, and colon but also in kidney, pancreas, testis, lung and placenta. Not detectable in brain, liver, thymus, prostate, or peripheral blood leukocytes (PubMed:10428823).

**Fibulin-5 Polyclonal Antibody - Protocols**

Provided below are standard protocols that you may find useful for product applications.

- [Western Blot](#)
- [Blocking Peptides](#)
- [Dot Blot](#)
- [Immunohistochemistry](#)
- [Immunofluorescence](#)
- [Immunoprecipitation](#)
- [Flow Cytometry](#)
- [Cell Culture](#)

**Fibulin-5 Polyclonal Antibody - Images**

### **Fibulin-5 Polyclonal Antibody - Background**

Essential for elastic fiber formation, is involved in the assembly of continuous elastin (ELN) polymer and promotes the interaction of microfibrils and ELN (PubMed:18185537). Stabilizes and organizes elastic fibers in the skin, lung and vasculature (By similarity). Promotes adhesion of endothelial cells through interaction of integrins and the RGD motif. Vascular ligand for integrin receptors which may play a role in vascular development and remodeling (PubMed:10428823). May act as an adapter that mediates the interaction between FBN1 and ELN (PubMed:17255108).