

SFRP5 Antibody (Center)
Affinity Purified Rabbit Polyclonal Antibody (Pab)
Catalog # AP6991C**Specification**

SFRP5 Antibody (Center) - Product Information

Application	FC, IHC-P, WB,E
Primary Accession	Q5T4F7
Other Accession	Q9XSC1
Reactivity	Human
Predicted	Bovine
Host	Rabbit
Clonality	Polyclonal
Isotype	Rabbit IgG
Antigen Region	219-248

SFRP5 Antibody (Center) - Additional Information**Gene ID** 6425**Other Names**

Secreted frizzled-related protein 5, sFRP-5, Frizzled-related protein 1b, FRP-1b, Secreted apoptosis-related protein 3, SARP-3, SFRP5, FRP1B, SARP3

Target/Specificity

This SFRP5 antibody is generated from rabbits immunized with a KLH conjugated synthetic peptide between 219-248 amino acids from the Central region of human SFRP5.

Dilution

FC~~1:10~50

IHC-P~~1:50~100

WB~~1:1000

E~~Use at an assay dependent concentration.

Format

Purified polyclonal antibody supplied in PBS with 0.09% (W/V) sodium azide. This antibody is purified through a protein A column, followed by peptide affinity purification.

Storage

Maintain refrigerated at 2-8°C for up to 2 weeks. For long term storage store at -20°C in small aliquots to prevent freeze-thaw cycles.

Precautions

SFRP5 Antibody (Center) is for research use only and not for use in diagnostic or therapeutic procedures.

SFRP5 Antibody (Center) - Protein Information

Name SFRP5

Synonyms FRP1B, SARP3

Function Soluble frizzled-related proteins (sFRPS) function as modulators of Wnt signaling through direct interaction with Wnts. They have a role in regulating cell growth and differentiation in specific cell types. SFRP5 may be involved in determining the polarity of photoreceptor, and perhaps, other cells in the retina.

Cellular Location
Secreted.

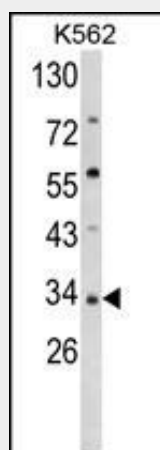
Tissue Location
Highly expressed in the retinal pigment epithelium (RPE) and pancreas. Weak expression in heart, liver and muscle

SFRP5 Antibody (Center) - Protocols

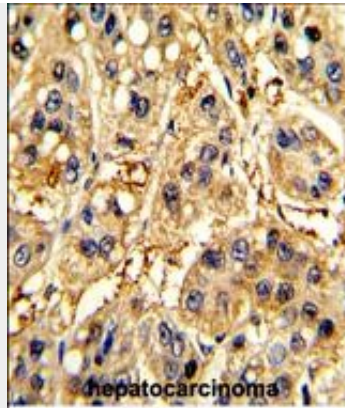
Provided below are standard protocols that you may find useful for product applications.

- [Western Blot](#)
- [Blocking Peptides](#)
- [Dot Blot](#)
- [Immunohistochemistry](#)
- [Immunofluorescence](#)
- [Immunoprecipitation](#)
- [Flow Cytometry](#)
- [Cell Culture](#)

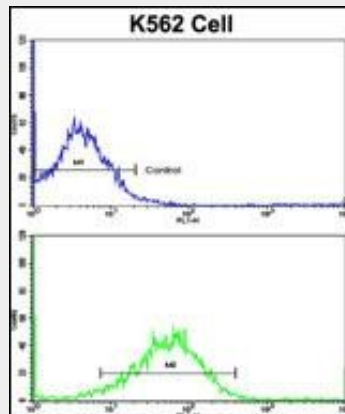
SFRP5 Antibody (Center) - Images



Western blot analysis of SFRP5 Antibody (Center) (Cat. #AP6991c) in K562 cell line lysates (35ug/lane). SFRP5 (arrow) was detected using the purified Pab.



Formalin-fixed and paraffin-embedded human hepatocarcinoma with SFRP5 Antibody (Center), which was peroxidase-conjugated to the secondary antibody, followed by DAB staining. This data demonstrates the use of this antibody for immunohistochemistry; clinical relevance has not been evaluated.



Flow cytometric analysis of K562 cells using SFRP5 Antibody (Center)(bottom histogram) compared to a negative control cell (top histogram). FITC-conjugated goat-anti-rabbit secondary antibodies were used for the analysis.

SFRP5 Antibody (Center) - Background

Secreted frizzled-related protein 5 (SFRP5) is a member of the SFRP family that contains a cysteine-rich domain homologous to the putative Wnt-binding site of Frizzled proteins. SFRPs act as soluble modulators of Wnt signaling. SFRP5 and SFRP1 may be involved in determining the polarity of photoreceptor cells in the retina.

SFRP5 Antibody (Center) - References

Deloukas,P., et.al., Nature 429 (6990), 375-381 (2004)