

FoxE3 Polyclonal Antibody
Catalog # AP69932**Specification**

FoxE3 Polyclonal Antibody - Product Information

Application	WB, IHC-P
Primary Accession	Q13461
Reactivity	Human, Mouse, Rat
Host	Rabbit
Clonality	Polyclonal

FoxE3 Polyclonal Antibody - Additional Information**Gene ID** 2301**Other Names**

FOXE3; FKHL12; FREAC8; Forkhead box protein E3; Forkhead-related protein FKHL12; Forkhead-related transcription factor 8; FREAC-8

Dilution

WB~~Western Blot: 1/500 - 1/2000. Immunohistochemistry: 1/100 - 1/300. ELISA: 1/20000. Not yet tested in other applications.

IHC-P~~N/A

Format

Liquid in PBS containing 50% glycerol, 0.5% BSA and 0.09% (W/V) sodium azide.

Storage Conditions

-20°C

FoxE3 Polyclonal Antibody - Protein Information**Name** FOXE3**Synonyms** FKHL12, FREAC8**Function**

Transcription factor that controls lens epithelial cell growth through regulation of proliferation, apoptosis and cell cycle (PubMed:22527307, PubMed:25504734). During lens development, controls the ratio of the lens fiber cells to the cells of the anterior lens epithelium by regulating the rate of proliferation and differentiation (By similarity). Controls lens vesicle closure and subsequent separation of the lens vesicle from ectoderm (By similarity). Controls the expression of DNAJB1 in a pathway that is crucial for the development of the anterior segment of the eye (PubMed:27218149).

Cellular Location

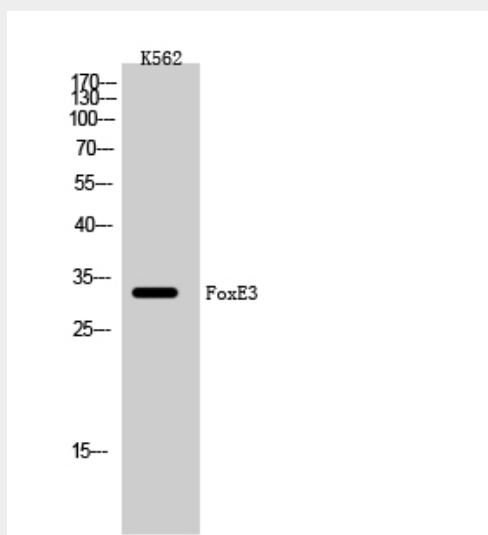
Nucleus.

FoxE3 Polyclonal Antibody - Protocols

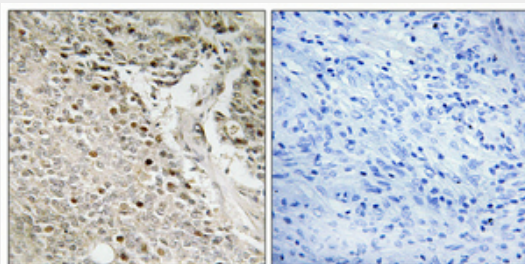
Provided below are standard protocols that you may find useful for product applications.

- [Western Blot](#)
- [Blocking Peptides](#)
- [Dot Blot](#)
- [Immunohistochemistry](#)
- [Immunofluorescence](#)
- [Immunoprecipitation](#)
- [Flow Cytometry](#)
- [Cell Culture](#)

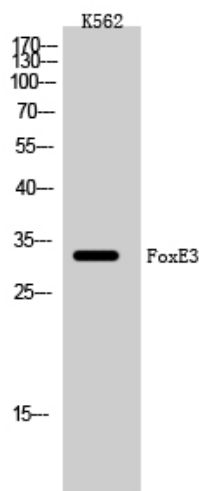
FoxE3 Polyclonal Antibody - Images



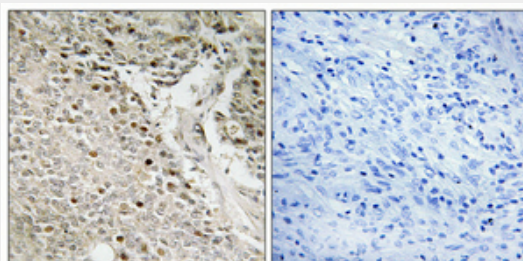
Western Blot analysis of K562 cells using FoxE3 Polyclonal Antibody cells nucleus extracted by Minute TM Cytoplasmic and Nuclear Fractionation kit (SC-003, Invent biotech, MN, USA).



Immunohistochemical analysis of paraffin-embedded Human prostate cancer. Antibody was diluted at 1:100 (4°, overnight). High-pressure and temperature Tris-EDTA, pH 8.0 was used for antigen retrieval. Negative control (right) obtained from antibody was pre-absorbed by immunogen peptide.



Western Blot analysis of K562 cells using FoxE3 Polyclonal Antibody cells nucleus extracted by Minute TM Cytoplasmic and Nuclear Fractionation kit (SC-003, Invent biotech, MN, USA).



Immunohistochemical analysis of paraffin-embedded Human prostate cancer. Antibody was diluted at 1:100 (4°, overnight). High-pressure and temperature Tris-EDTA, pH 8.0 was used for antigen retrieval. Negative control (right) obtained from antibody was pre-absorbed by immunogen peptide.

FoxE3 Polyclonal Antibody - Background

Transcription factor that controls lens epithelial cell growth through regulation of proliferation, apoptosis and cell cycle (PubMed:22527307, PubMed:25504734). During lens development, controls the ratio of the lens fiber cells to the cells of the anterior lens epithelium by regulating the rate of proliferation and differentiation (By similarity). Controls lens vesicle closure and subsequent separation of the lens vesicle from ectoderm (By similarity). Controls the expression of DNAJB1 in a pathway that is crucial for the development of the anterior segment of the eye (PubMed:27218149).