

NAT2 Antibody (C-term)
Affinity Purified Rabbit Polyclonal Antibody (Pab)
Catalog # AP6993B

Specification

NAT2 Antibody (C-term) - Product Information

Application	FC, IHC-P, WB,E
Primary Accession	P11245
Reactivity	Human, Mouse
Host	Rabbit
Clonality	Polyclonal
Isotype	Rabbit IgG
Calculated MW	33571
Antigen Region	226-254

NAT2 Antibody (C-term) - Additional Information

Gene ID 10

Other Names

Arylamine N-acetyltransferase 2, Arylamide acetylase 2, N-acetyltransferase type 2, NAT-2, Polymorphic arylamine N-acetyltransferase, PNAT, NAT2, AAC2

Target/Specificity

This NAT2 antibody is generated from rabbits immunized with a KLH conjugated synthetic peptide between 226-254 amino acids from the C-terminal region of human NAT2.

Dilution

FC~~1:10~50

IHC-P~~1:10~50

WB~~1:1000

E~~Use at an assay dependent concentration.

Format

Purified polyclonal antibody supplied in PBS with 0.09% (W/V) sodium azide. This antibody is purified through a protein A column, followed by peptide affinity purification.

Storage

Maintain refrigerated at 2-8°C for up to 2 weeks. For long term storage store at -20°C in small aliquots to prevent freeze-thaw cycles.

Precautions

NAT2 Antibody (C-term) is for research use only and not for use in diagnostic or therapeutic procedures.

NAT2 Antibody (C-term) - Protein Information

Name NAT2

Synonyms AAC2

Function Catalyzes the N- or O-acetylation of various arylamine and heterocyclic amine substrates (PubMed:[12222688](#), PubMed:[7915226](#)). Participates in the detoxification of a plethora of hydrazine and arylamine drugs, and is able to bioactivate several known carcinogens.

Cellular Location

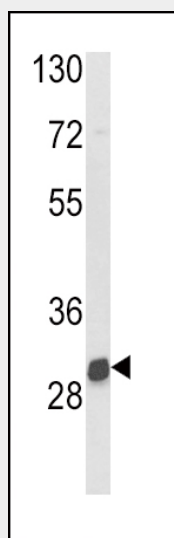
Cytoplasm.

NAT2 Antibody (C-term) - Protocols

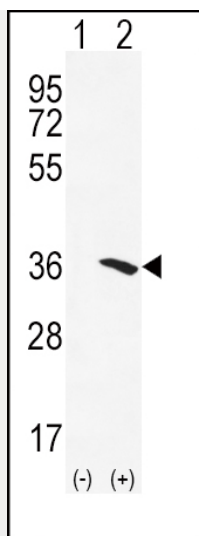
Provided below are standard protocols that you may find useful for product applications.

- [Western Blot](#)
- [Blocking Peptides](#)
- [Dot Blot](#)
- [Immunohistochemistry](#)
- [Immunofluorescence](#)
- [Immunoprecipitation](#)
- [Flow Cytometry](#)
- [Cell Culture](#)

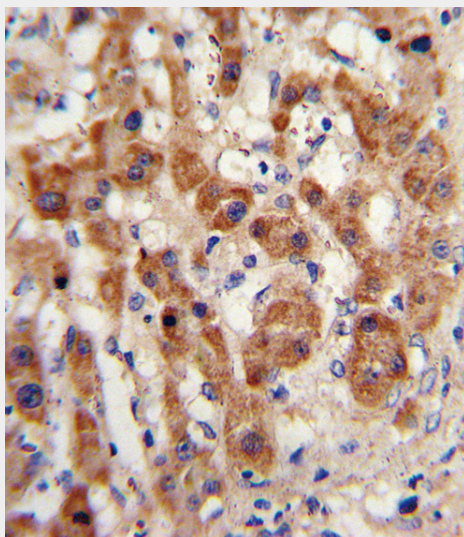
NAT2 Antibody (C-term) - Images



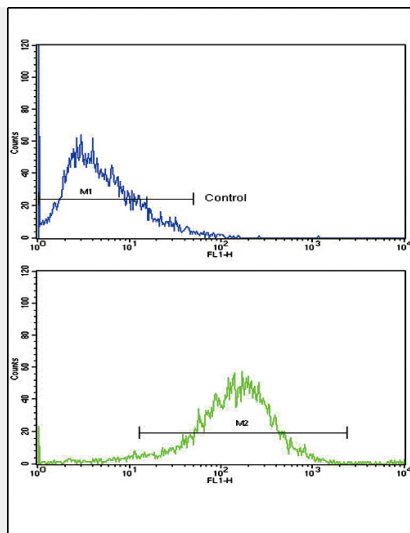
Western blot analysis of NAT2 Antibody (C-term) (Cat. #AP6993b) in mouse kidney tissue lysates (35ug/lane). NAT2 (arrow) was detected using the purified Pab.



Western blot analysis of NAT2 (arrow) using rabbit polyclonal NAT2 Antibody (C-term) (Cat. #AP6993b). 293 cell lysates (2 ug/lane) either nontransfected (Lane 1) or transiently transfected (Lane 2) with the NAT2 gene.



Formalin-fixed and paraffin-embedded human hepatocarcinoma with NAT2 Antibody (C-term), which was peroxidase-conjugated to the secondary antibody, followed by DAB staining. This data demonstrates the use of this antibody for immunohistochemistry; clinical relevance has not been evaluated.



Flow cytometric analysis of HepG2 cells using NAT2 Antibody (C-term)(bottom histogram) compared to a negative control cell (top histogram). FITC-conjugated goat-anti-rabbit secondary antibodies were used for the analysis.

NAT2 Antibody (C-term) - Background

NAT2 is an enzyme that functions to both activate and deactivate arylamine and hydrazine drugs and carcinogens.

NAT2 Antibody (C-term) - References

Kim,S.H., et.al., Pharmacogenomics 10 (11), 1767-1779 (2009)