

FSHR Polyclonal Antibody
Catalog # AP69978**Specification**

FSHR Polyclonal Antibody - Product Information

Application	WB, IHC-P, IF
Primary Accession	P23945
Reactivity	Human, Mouse, Rat
Host	Rabbit
Clonality	Polyclonal

FSHR Polyclonal Antibody - Additional Information**Gene ID** 2492**Other Names**

FSHR; LGR1; Follicle-stimulating hormone receptor; FSH-R; Follitropin receptor

Dilution

WB~~IHC-p: 100-300. Western Blot: 1/500 - 1/2000. Immunofluorescence: 1/200 - 1/1000. ELISA: 1/5000. Not yet tested in other applications.

IHC-P~~N/A

IF~~1:50~200

Format

Liquid in PBS containing 50% glycerol, 0.5% BSA and 0.09% (W/V) sodium azide.

Storage Conditions

-20°C

FSHR Polyclonal Antibody - Protein Information**Name** FSHR**Synonyms** LGR1**Function**

G protein-coupled receptor for follitropin, the follicle-stimulating hormone (PubMed:11847099, PubMed:24058690, PubMed:24692546). Through cAMP production activates the downstream PI3K-AKT and ERK1/ERK2 signaling pathways (PubMed:24058690).

Cellular Location

Cell membrane; Multi-pass membrane protein

Tissue Location

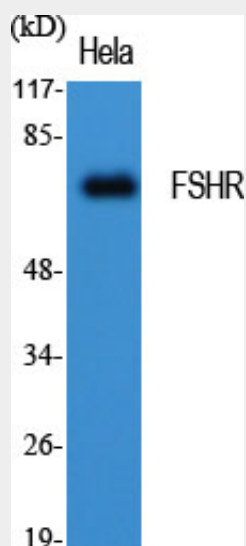
Sertoli cells and ovarian granulosa cells.

FSHR Polyclonal Antibody - Protocols

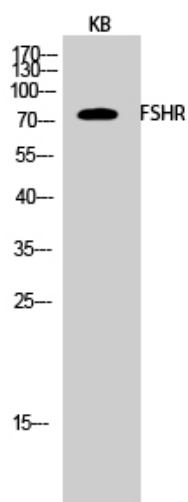
Provided below are standard protocols that you may find useful for product applications.

- [Western Blot](#)
- [Blocking Peptides](#)
- [Dot Blot](#)
- [Immunohistochemistry](#)
- [Immunofluorescence](#)
- [Immunoprecipitation](#)
- [Flow Cytometry](#)
- [Cell Culture](#)

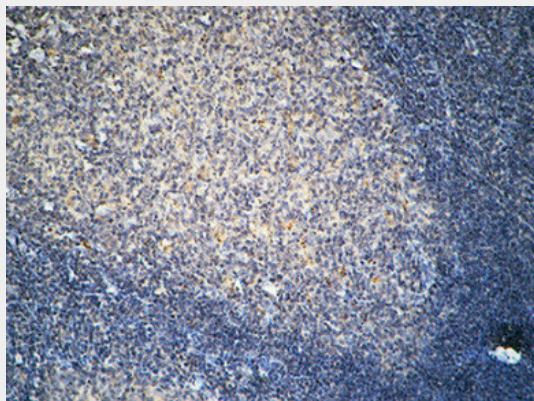
FSHR Polyclonal Antibody - Images



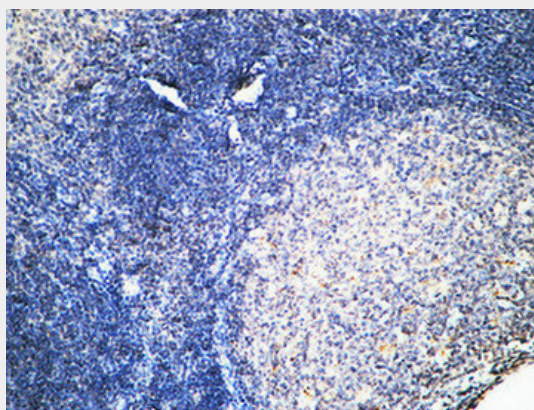
Western Blot analysis of various cells using FSHR Polyclonal Antibody diluted at 1:1000



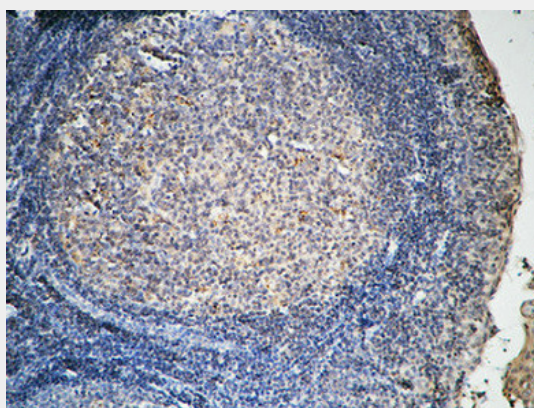
Western Blot analysis of KB cells using FSHR Polyclonal Antibody diluted at 1:1000



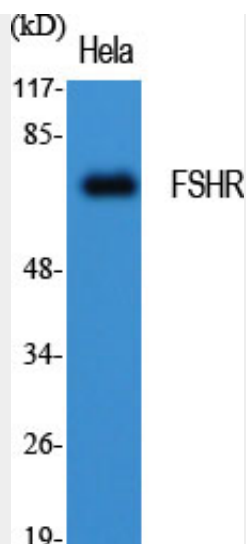
Immunohistochemical analysis of paraffin-embedded Human Amygdala. 1, Antibody was diluted at 1:100(4°,overnight). 2, High-pressure and temperature EDTA, pH8.0 was used for antigen retrieval. 3,Secondary antibody was diluted at 1:200(room temperature, 30min).



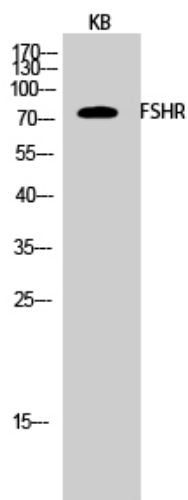
Immunohistochemical analysis of paraffin-embedded Human Amygdala. 1, Antibody was diluted at 1:100(4°,overnight). 2, High-pressure and temperature EDTA, pH8.0 was used for antigen retrieval. 3,Secondary antibody was diluted at 1:200(room temperature, 30min).



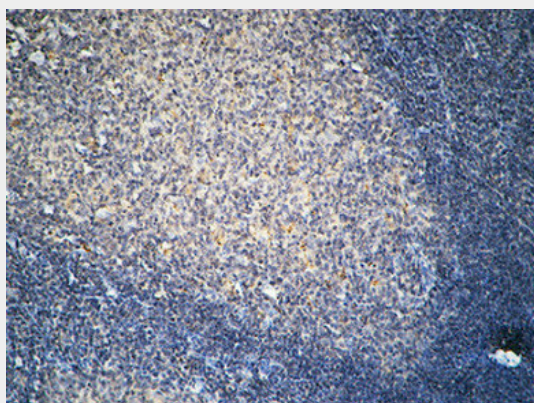
Immunohistochemical analysis of paraffin-embedded Human Amygdala. 1, Antibody was diluted at 1:100(4°,overnight). 2, High-pressure and temperature EDTA, pH8.0 was used for antigen retrieval. 3,Secondary antibody was diluted at 1:200(room temperature, 30min).



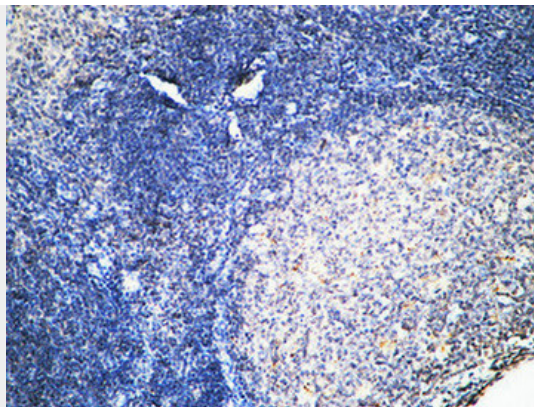
Western Blot analysis of various cells using FSHR Polyclonal Antibody diluted at 1:1000



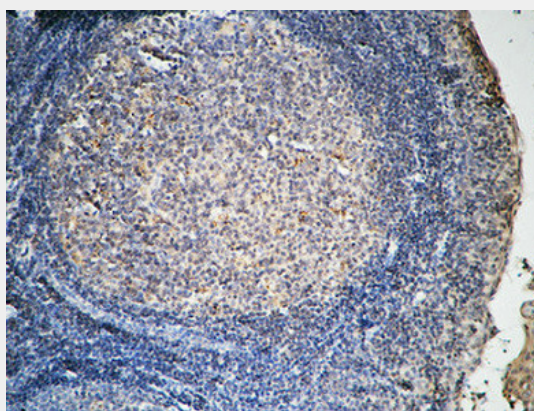
Western Blot analysis of KB cells using FSHR Polyclonal Antibody diluted at 1:1000



Immunohistochemical analysis of paraffin-embedded Human Amygdala. 1, Antibody was diluted at 1:100(4°,overnight). 2, High-pressure and temperature EDTA, pH8.0 was used for antigen retrieval. 3,Secondary antibody was diluted at 1:200(room temperature, 30min).



Immunohistochemical analysis of paraffin-embedded Human Amygdala. 1, Antibody was diluted at 1:100(4°,overnight). 2, High-pressure and temperature EDTA, pH8.0 was used for antigen retrieval. 3,Secondary antibody was diluted at 1:200(room temperature, 30min).



Immunohistochemical analysis of paraffin-embedded Human Amygdala. 1, Antibody was diluted at 1:100(4°,overnight). 2, High-pressure and temperature EDTA, pH8.0 was used for antigen retrieval. 3,Secondary antibody was diluted at 1:200(room temperature, 30min).

FSHR Polyclonal Antibody - Background

G protein-coupled receptor for follitropin, the follicle-stimulating hormone (PubMed:11847099, PubMed:24058690, PubMed:24692546). Through cAMP production activates the downstream PI3K-AKT and ERK1/ERK2 signaling pathways (PubMed:24058690).