

**G2A Polyclonal Antibody**  
**Catalog # AP69990****Specification**

---

**G2A Polyclonal Antibody - Product Information**

Application	WB, IF
Primary Accession	<a href="#">Q9UNW8</a>
Reactivity	Human, Mouse, Monkey
Host	Rabbit
Clonality	Polyclonal

**G2A Polyclonal Antibody - Additional Information****Gene ID** 29933**Other Names**

GPR132; G2A; Probable G-protein coupled receptor 132; G2 accumulation protein

**Dilution**

WB~~Western Blot: 1/500 - 1/2000. Immunofluorescence: 1/200 - 1/1000. ELISA: 1/5000. Not yet tested in other applications.

IF~~1:50~200

**Format**

Liquid in PBS containing 50% glycerol, 0.5% BSA and 0.09% (W/V) sodium azide.

**Storage Conditions**

-20°C

**G2A Polyclonal Antibody - Protein Information****Name** GPR132**Synonyms** G2A**Function**

May be a receptor for oxidized free fatty acids derived from linoleic and arachidonic acids such as 9-hydroxyoctadecadienoic acid (9-HODE). Activates a G alpha protein, most likely G alpha(q). May be involved in apoptosis. Functions at the G2/M checkpoint to delay mitosis. May function as a sensor that monitors the oxidative states and mediates appropriate cellular responses such as secretion of paracrine signals and attenuation of proliferation. May mediate the accumulation of intracellular inositol phosphates at acidic pH through proton-sensing activity.

**Cellular Location**

Cell membrane; Multi-pass membrane protein. Note=Internalized and accumulated in endosomal compartments. LPC triggers the relocalization from the endosomal compartment to the cell surface (By similarity).

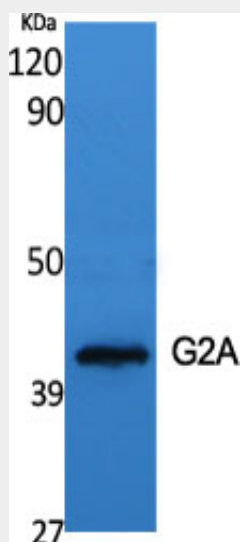
**Tissue Location**

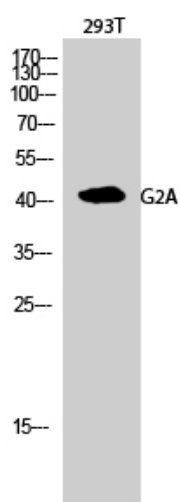
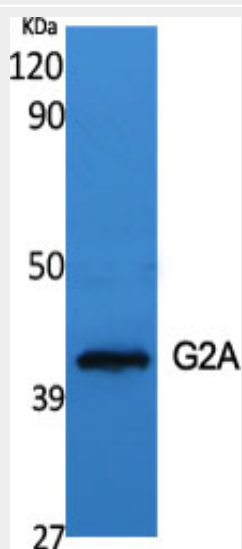
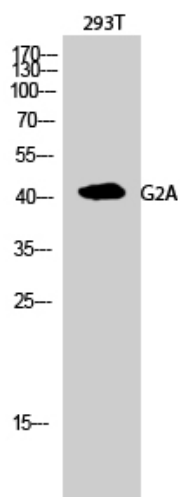
Highly expressed in macrophages and hematopoietic tissues rich in lymphocytes, like spleen and thymus. Weakly expressed in heart and lung. In atherosclerotic plaques, expression is observed around the lipid core and at the shoulder region

**G2A Polyclonal Antibody - Protocols**

Provided below are standard protocols that you may find useful for product applications.

- [Western Blot](#)
- [Blocking Peptides](#)
- [Dot Blot](#)
- [Immunohistochemistry](#)
- [Immunofluorescence](#)
- [Immunoprecipitation](#)
- [Flow Cytometry](#)
- [Cell Culture](#)

**G2A Polyclonal Antibody - Images**



**G2A Polyclonal Antibody - Background**

May be a receptor for oxidized free fatty acids derived from linoleic and arachidonic acids such as 9- hydroxyoctadecadienoic acid (9-HODE). Activates a G alpha protein, most likely G alpha(q). May be involved in apoptosis. Functions at the G2/M checkpoint to delay mitosis. May function as a sensor that monitors the oxidative states and mediates appropriate cellular responses such as secretion of paracrine signals and attenuation of proliferation. May mediate the accumulation of intracellular inositol phosphates at acidic pH through proton- sensing activity.