

SDCCAG33 Antibody (Center)
Purified Rabbit Polyclonal Antibody (Pab)
Catalog # AP6999c

Specification

SDCCAG33 Antibody (Center) - Product Information

Application	FC, IHC-P, WB,E
Primary Accession	Q6ZSZ6
Reactivity	Human, Mouse
Host	Rabbit
Clonality	Polyclonal
Isotype	Rabbit IgG
Calculated MW	117916
Antigen Region	656-685

SDCCAG33 Antibody (Center) - Additional Information

Gene ID 10194

Other Names

Teashirt homolog 1, Antigen NY-CO-33, Serologically defined colon cancer antigen 33, TSHZ1, SDCCAG33, TSH1

Target/Specificity

This SDCCAG33 antibody is generated from rabbits immunized with a KLH conjugated synthetic peptide between 656-685 amino acids from the Central region of human SDCCAG33.

Dilution

FC~~1:10~50

IHC-P~~1:50~100

WB~~1:1000

E~~Use at an assay dependent concentration.

Format

Purified polyclonal antibody supplied in PBS with 0.09% (W/V) sodium azide. This antibody is prepared by Saturated Ammonium Sulfate (SAS) precipitation followed by dialysis against PBS.

Storage

Maintain refrigerated at 2-8°C for up to 2 weeks. For long term storage store at -20°C in small aliquots to prevent freeze-thaw cycles.

Precautions

SDCCAG33 Antibody (Center) is for research use only and not for use in diagnostic or therapeutic procedures.

SDCCAG33 Antibody (Center) - Protein Information

Name TSHZ1

Synonyms SDCCAG33, TSH1

Function Probable transcriptional regulator involved in developmental processes. May act as a transcriptional repressor (Potential).

Cellular Location

Nucleus.

Tissue Location

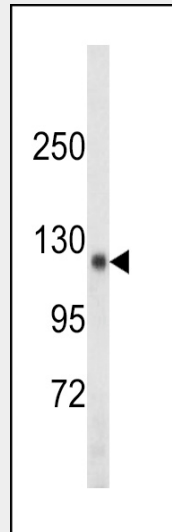
Expressed in brain; strongly reduced in post-mortem elderly subjects with Alzheimer disease.

SDCCAG33 Antibody (Center) - Protocols

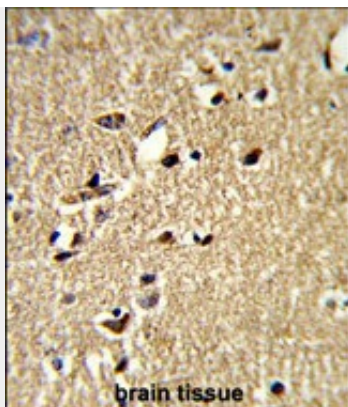
Provided below are standard protocols that you may find useful for product applications.

- [Western Blot](#)
- [Blocking Peptides](#)
- [Dot Blot](#)
- [Immunohistochemistry](#)
- [Immunofluorescence](#)
- [Immunoprecipitation](#)
- [Flow Cytometry](#)
- [Cell Culture](#)

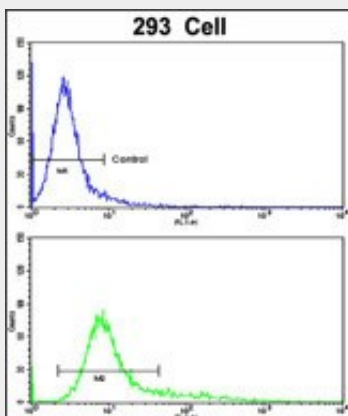
SDCCAG33 Antibody (Center) - Images



Western blot analysis of SDCCAG33 Antibody (Center) (Cat. #AP6999c) in mouse kidney tissue lysates (35ug/lane). SDCCAG33 (arrow) was detected using the purified Pab.



Formalin-fixed and paraffin-embedded human brain tissue reacted with SDCCAG33 Antibody (Center), which was peroxidase-conjugated to the secondary antibody, followed by DAB staining. This data demonstrates the use of this antibody for immunohistochemistry; clinical relevance has not been evaluated.



Flow cytometric analysis of 293 cells using SDCCAG33 Antibody (Center)(bottom histogram) compared to a negative control cell (top histogram). FITC-conjugated goat-anti-rabbit secondary antibodies were used for the analysis.

SDCCAG33 Antibody (Center) - Background

SDCCAG33 is a colon cancer antigen that was defined by serological analysis of recombinant cDNA expression libraries. This protein is a member of the teashirt C2H2-type zinc-finger protein family and may be involved in transcriptional regulation of developmental processes.

SDCCAG33 Antibody (Center) - References

Core,N., Caubit,X., et.al., Dev. Biol. 308 (2), 407-420 (2007)
 Scanlan,M.J., et.al., Int. J. Cancer 76 (5), 652-658 (1998)