

**GATA-5 Polyclonal Antibody**  
**Catalog # AP70047****Specification**

---

**GATA-5 Polyclonal Antibody - Product Information**

Application	WB, IHC-P
Primary Accession	<a href="#">Q9BWX5</a>
Reactivity	Human, Mouse
Host	Rabbit
Clonality	Polyclonal

**GATA-5 Polyclonal Antibody - Additional Information****Gene ID** 140628**Other Names**

GATA5; Transcription factor GATA-5; GATA-binding factor 5

**Dilution**

WB~~Western Blot: 1/500 - 1/2000. Immunohistochemistry: 1/100 - 1/300. ELISA: 1/10000. Not yet tested in other applications.

IHC-P~~N/A

**Format**

Liquid in PBS containing 50% glycerol, 0.5% BSA and 0.09% (W/V) sodium azide.

**Storage Conditions**

-20°C

**GATA-5 Polyclonal Antibody - Protein Information****Name** GATA5 ([HGNC:15802](#))**Function**

Transcription factor required during cardiovascular development (PubMed:<a href="http://www.uniprot.org/citations/23289003" target="\_blank">23289003</a>). Plays an important role in the transcriptional program(s) that underlies smooth muscle cell diversity (By similarity). Binds to the functionally important CEF-1 nuclear protein binding site in the cardiac-specific slow/cardiac troponin C transcriptional enhancer (PubMed:<a href="http://www.uniprot.org/citations/25543888" target="\_blank">25543888</a>).

**Cellular Location**

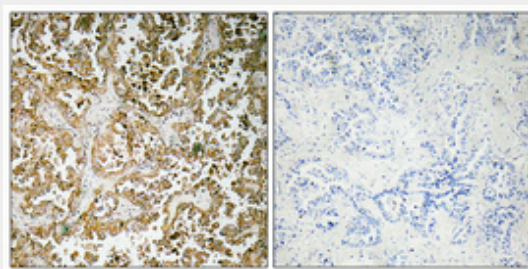
Nucleus.

**GATA-5 Polyclonal Antibody - Protocols**

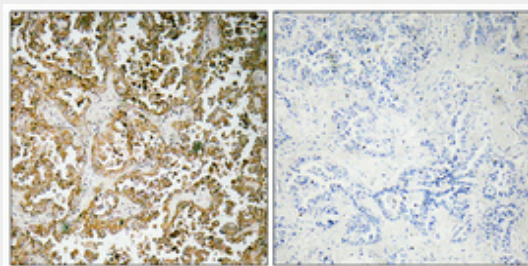
Provided below are standard protocols that you may find useful for product applications.

- [Western Blot](#)
- [Blocking Peptides](#)
- [Dot Blot](#)
- [Immunohistochemistry](#)
- [Immunofluorescence](#)
- [Immunoprecipitation](#)
- [Flow Cytometry](#)
- [Cell Culture](#)

#### **GATA-5 Polyclonal Antibody - Images**



Immunohistochemical analysis of paraffin-embedded Human lung cancer. Antibody was diluted at 1:100(4°,overnight). High-pressure and temperature Tris-EDTA,pH8.0 was used for antigen retrieval. Negative contrl (right) obtaned from antibody was pre-absorbed by immunogen peptide.



Immunohistochemical analysis of paraffin-embedded Human lung cancer. Antibody was diluted at 1:100(4°,overnight). High-pressure and temperature Tris-EDTA,pH8.0 was used for antigen retrieval. Negative contrl (right) obtaned from antibody was pre-absorbed by immunogen peptide.

#### **GATA-5 Polyclonal Antibody - Background**

Transcription factor required during cardiovascular development (PubMed:23289003). Plays an important role in the transcriptional program(s) that underlies smooth muscle cell diversity (By similarity). Binds to the functionally important CEF-1 nuclear protein binding site in the cardiac-specific slow/cardiac troponin C transcriptional enhancer (PubMed:25543888).