

**GBP3 Polyclonal Antibody**  
**Catalog # AP70051****Specification**

---

**GBP3 Polyclonal Antibody - Product Information**

Application	WB, IHC-P
Primary Accession	<a href="#">Q9H0R5</a>
Reactivity	Human
Host	Rabbit
Clonality	Polyclonal

**GBP3 Polyclonal Antibody - Additional Information****Gene ID** 2635**Other Names**

GBP3; Guanylate-binding protein 3; GTP-binding protein 3; GBP-3; Guanine nucleotide-binding protein 3

**Dilution**

WB~~Western Blot: 1/500 - 1/2000. Immunohistochemistry: 1/100 - 1/300. ELISA: 1/10000. Not yet tested in other applications.

IHC-P~~N/A

**Format**

Liquid in PBS containing 50% glycerol, 0.5% BSA and 0.09% (W/V) sodium azide.

**Storage Conditions**

-20°C

**GBP3 Polyclonal Antibody - Protein Information****Name** GBP3**Function**

Interferon (IFN)-inducible GTPase that plays important roles in innate immunity against a diverse range of bacterial, viral and protozoan pathogens (PubMed:<a href="http://www.uniprot.org/citations/22106366" target="\_blank">22106366</a>). Hydrolyzes GTP very efficiently; GDP rather than GMP is the major reaction product (By similarity). Following infection, recruited to the pathogen-containing vacuoles or vacuole-escaped bacteria and acts as a positive regulator of inflammasome assembly by promoting the release of inflammasome ligands from bacteria (By similarity). Acts by promoting lysis of pathogen- containing vacuoles, releasing pathogens into the cytosol (By similarity). Following pathogen release in the cytosol, promotes recruitment of proteins that mediate bacterial cytolysis: this liberates ligands that are detected by inflammasomes, such as lipopolysaccharide (LPS) that activates the non-canonical CASP4/CASP11 inflammasome or double-stranded DNA (dsDNA) that activates the AIM2 inflammasome (By similarity). Exhibits antiviral activity against influenza virus (PubMed:<a href="http://www.uniprot.org/citations/22106366" target="\_blank">22106366</a>).

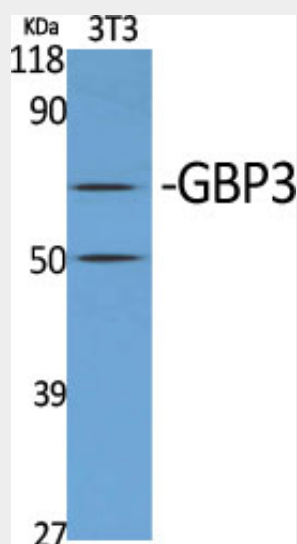
**Cellular Location**

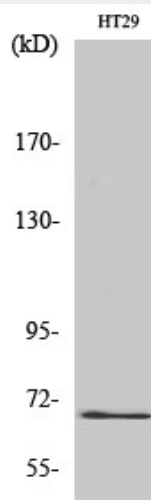
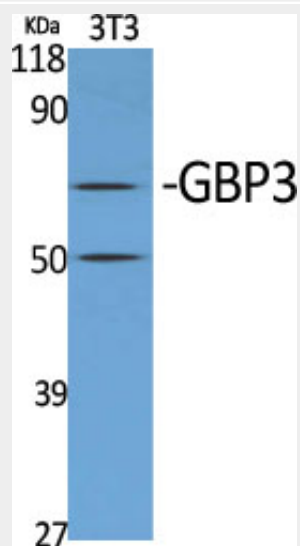
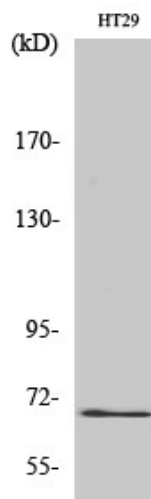
Cytoplasm. Cytoplasm, perinuclear region. Golgi apparatus membrane. Note=Heterodimers with GBP1, GBP2 and GBP5 localize in the compartment of the prenylated GBPs: with GBP1 in a vesicle-like compartment, with GBP2, around the nucleus and with GBP5, at the Golgi apparatus

**GBP3 Polyclonal Antibody - Protocols**

Provided below are standard protocols that you may find useful for product applications.

- [Western Blot](#)
- [Blocking Peptides](#)
- [Dot Blot](#)
- [Immunohistochemistry](#)
- [Immunofluorescence](#)
- [Immunoprecipitation](#)
- [Flow Cytometry](#)
- [Cell Culture](#)

**GBP3 Polyclonal Antibody - Images**



### **GBP3 Polyclonal Antibody - Background**

Exhibits antiviral activity against influenza virus.