

GFAP Polyclonal Antibody
Catalog # AP70077**Specification**

GFAP Polyclonal Antibody - Product Information

| | |
|-------------------|------------------------|
| Application | WB, IHC-P, IF |
| Primary Accession | P14136 |
| Reactivity | Human |
| Host | Rabbit |
| Clonality | Polyclonal |

GFAP Polyclonal Antibody - Additional Information**Gene ID** 2670**Other Names**

GFAP; Glial fibrillary acidic protein; GFAP

Dilution

WB~~Western Blot: 1/500 - 1/2000. Immunohistochemistry: 1/100 - 1/300. Immunofluorescence: 1/200 - 1/1000. ELISA: 1/5000. Not yet tested in other applications.

IHC-P~~N/A

IF~~1:50~200

Format

Liquid in PBS containing 50% glycerol, 0.5% BSA and 0.09% (W/V) sodium azide.

Storage Conditions

-20°C

GFAP Polyclonal Antibody - Protein Information**Name** GFAP**Function**

GFAP, a class-III intermediate filament, is a cell-specific marker that, during the development of the central nervous system, distinguishes astrocytes from other glial cells.

Cellular Location

Cytoplasm. Note=Associated with intermediate filaments

Tissue Location

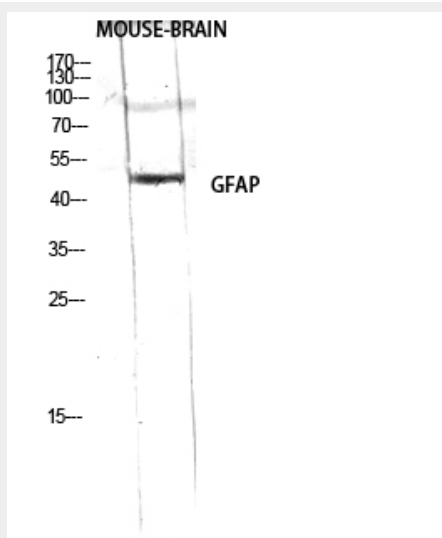
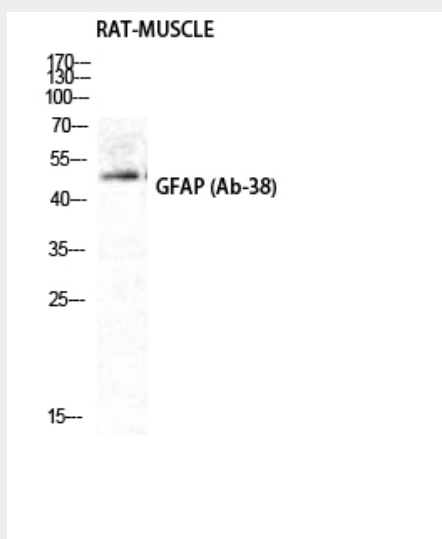
Expressed in cells lacking fibronectin.

GFAP Polyclonal Antibody - Protocols

Provided below are standard protocols that you may find useful for product applications.

- [Western Blot](#)
- [Blocking Peptides](#)
- [Dot Blot](#)
- [Immunohistochemistry](#)
- [Immunofluorescence](#)
- [Immunoprecipitation](#)
- [Flow Cytometry](#)
- [Cell Culture](#)

GFAP Polyclonal Antibody - Images



GFAP Polyclonal Antibody - Background

GFAP, a class-III intermediate filament, is a cell-specific marker that, during the development of the central nervous system, distinguishes astrocytes from other glial cells.