

GIMAP5 Polyclonal Antibody
Catalog # AP70088**Specification**

GIMAP5 Polyclonal Antibody - Product Information

Application	WB
Primary Accession	Q96F15
Reactivity	Human
Host	Rabbit
Clonality	Polyclonal

GIMAP5 Polyclonal Antibody - Additional Information**Gene ID** 55340**Other Names**

GIMAP5; IAN4L1; IAN5; IMAP3; GTPase IMAP family member 5; Immunity-associated nucleotide 4-like 1 protein; Immunity-associated nucleotide 5 protein; IAN-5; hIAN5; Immunity-associated protein 3

Dilution

WB~~Western Blot: 1/500 - 1/2000. Immunohistochemistry: 1/100 - 1/300. ELISA: 1/20000. Not yet tested in other applications.

Format

Liquid in PBS containing 50% glycerol, 0.5% BSA and 0.09% (W/V) sodium azide.

Storage Conditions

-20°C

GIMAP5 Polyclonal Antibody - Protein Information**Name** GIMAP5**Synonyms** IAN4L1, IAN5, IMAP3**Function**

Plays a role in T lymphocyte development and the optimal generation of CD4/CD8 double-positive thymocytes (By similarity). Inhibitor of GSK3A, possibly by sequestering GSK3A in cytoplasmic vesicles and impairing its translocation to the nucleus. Consequently, impairs GSK3A-dependent transcriptional program and regulation of the DNA damage response occurring during T cells proliferation (PubMed:29382851). Required for the survival of peripheral T cells, natural killer (NK) and NK T-cell development and the maintenance of normal liver function (By similarity). May promote the survival of mature T lymphocytes upon cytokine withdrawal (By similarity). May regulate Ca(2+) homeostasis by modulating lysosomal Ca(2+) stores, preventing its accumulation in the absence of T cell activation (By similarity). May play a role in mitochondrial DNA segregation in hematopoietic tissues (By similarity). Is a regulator of liver endothelial cell homeostasis (By

similarity).

Cellular Location

Lysosome membrane; Single-pass type IV membrane protein. Endosome, multivesicular body membrane; Single-pass type IV membrane protein. Endosome membrane {ECO:0000250|UniProtKB:Q8K3L6}; Single-pass type IV membrane protein {ECO:0000250|UniProtKB:Q8K3L6} Note=The mitochondrial localization originally reported was observed with C-terminally tagged protein and was not confirmed in later publications.

Tissue Location

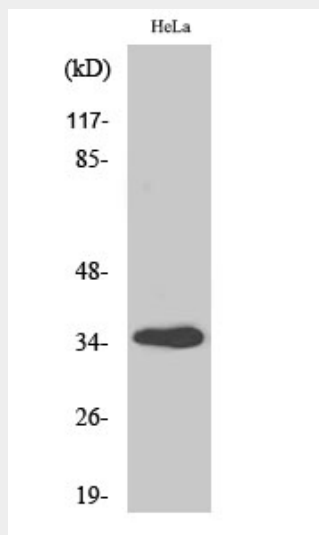
Widely expressed with high levels in lymph node and spleen (PubMed:14724691). High expression found in T lymphocytes, including CD4 and CD8-positive T-cells, and monocytes (PubMed:14724691, PubMed:29382851). Very low expression levels in B-lymphocytes (PubMed:14724691).

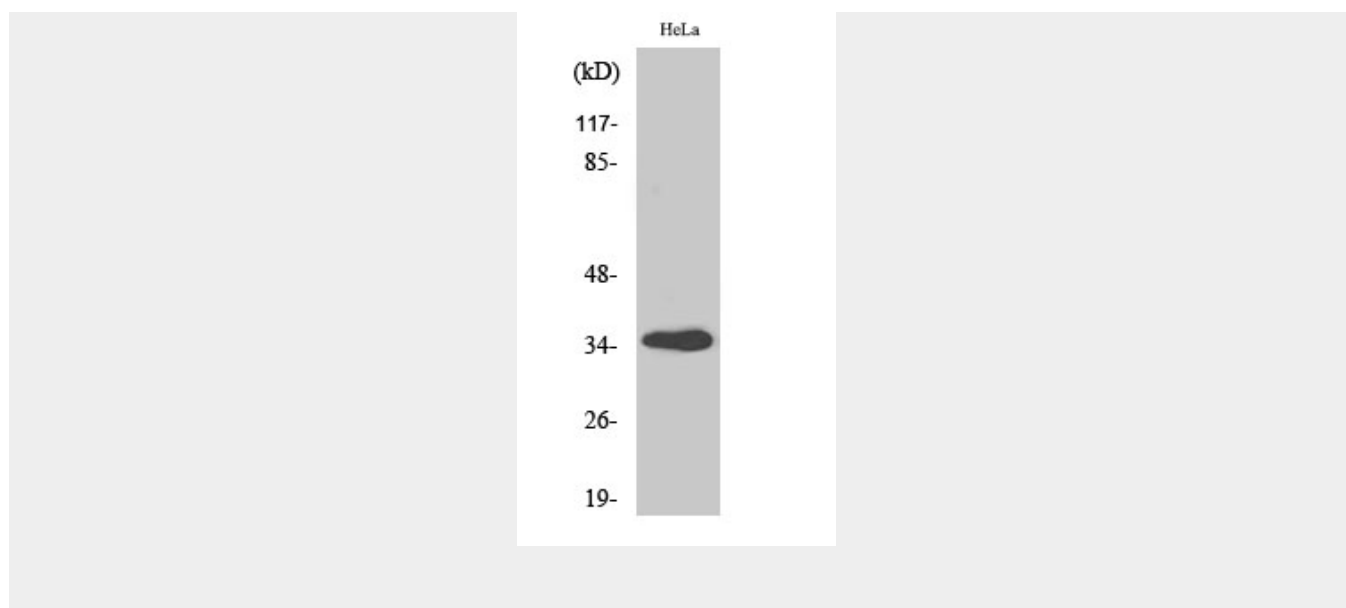
GIMAP5 Polyclonal Antibody - Protocols

Provided below are standard protocols that you may find useful for product applications.

- [Western Blot](#)
- [Blocking Peptides](#)
- [Dot Blot](#)
- [Immunohistochemistry](#)
- [Immunofluorescence](#)
- [Immunoprecipitation](#)
- [Flow Cytometry](#)
- [Cell Culture](#)

GIMAP5 Polyclonal Antibody - Images





GIMAP5 Polyclonal Antibody - Background

Required for mitochondrial integrity and T-cell survival. May contribute to T-cell quiescence (By similarity).