

GRK6 Antibody (C-term)
Purified Rabbit Polyclonal Antibody (Pab)
Catalog # AP7008a**Specification**

GRK6 Antibody (C-term) - Product Information

Application	IHC-P, WB,E
Primary Accession	P43250
Other Accession	P97711 , O70293
Reactivity	Human, Mouse
Predicted	Rat
Host	Rabbit
Clonality	Polyclonal
Isotype	Rabbit IgG
Calculated MW	65991
Antigen Region	551-576

GRK6 Antibody (C-term) - Additional Information**Gene ID** 2870**Other Names**

G protein-coupled receptor kinase 6, G protein-coupled receptor kinase GRK6, GRK6, GPRK6

Target/Specificity

This GRK6 antibody is generated from rabbits immunized with a KLH conjugated synthetic peptide between 551-576 amino acids from the C-terminal region of human GRK6.

Dilution

IHC-P~~1:50~100

WB~~1:1000

E~~Use at an assay dependent concentration.

Format

Purified polyclonal antibody supplied in PBS with 0.09% (W/V) sodium azide. This antibody is prepared by Saturated Ammonium Sulfate (SAS) precipitation followed by dialysis against PBS.

Storage

Maintain refrigerated at 2-8°C for up to 2 weeks. For long term storage store at -20°C in small aliquots to prevent freeze-thaw cycles.

Precautions

GRK6 Antibody (C-term) is for research use only and not for use in diagnostic or therapeutic procedures.

GRK6 Antibody (C-term) - Protein Information**Name** GRK6

Synonyms GPRK6

Function Specifically phosphorylates the activated forms of G protein- coupled receptors. Such receptor phosphorylation initiates beta- arrestin-mediated receptor desensitization, internalization, and signaling events leading to their desensitization. Seems to be involved in the desensitization of D2-like dopamine receptors in striatum and chemokine receptor CXCR4 which is critical for CXCL12-induced cell chemotaxis (By similarity). Phosphorylates rhodopsin (RHO) (in vitro) and a non G-protein-coupled receptor: LRP6 during Wnt signaling (in vitro).

Cellular Location

Membrane; Lipid-anchor.

Tissue Location

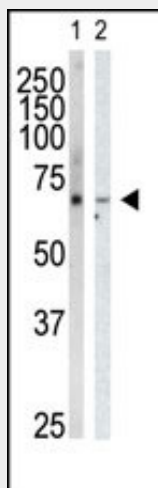
Widely expressed..

GRK6 Antibody (C-term) - Protocols

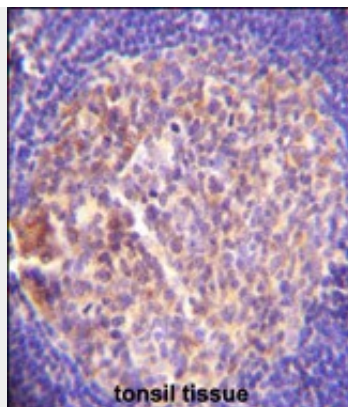
Provided below are standard protocols that you may find useful for product applications.

- [Western Blot](#)
- [Blocking Peptides](#)
- [Dot Blot](#)
- [Immunohistochemistry](#)
- [Immunofluorescence](#)
- [Immunoprecipitation](#)
- [Flow Cytometry](#)
- [Cell Culture](#)

GRK6 Antibody (C-term) - Images



Western blot analysis of anti-GRK6 Pab (Cat. #AP7008a) in HeLa cell lysate (Lane 1) and mouse heart tissue lysate (Lane 2). GRK6 (arrow) was detected using purified Pab. Secondary HRP-anti-rabbit was used for signal visualization with chemiluminescence.



GRK6 Antibody (C-term) (Cat. #AP7008A) immunohistochemistry analysis in formalin fixed and paraffin embedded human tonsil tissue followed by peroxidase conjugation of the secondary antibody and DAB staining. This data demonstrates the use of GRK6 Antibody (C-term) for immunohistochemistry. Clinical relevance has not been evaluated.

GRK6 Antibody (C-term) - Background

GRK6 is a member of the guanine nucleotide-binding protein (G protein)-coupled receptor kinase subfamily of the Ser/Thr protein kinase family. The protein phosphorylates the activated forms of G protein-coupled receptors thus initiating their deactivation.

GRK6 Antibody (C-term) - References

Strausberg, R.L., et al., Proc. Natl. Acad. Sci. U.S.A. 99(26):16899-16903 (2002).
Stoffel, R.H., et al., J. Biol. Chem. 269(45):27791-27794 (1994).
Benovic, J.L., et al., J. Biol. Chem. 268(26):19521-19527 (1993).