

**GK1 Polyclonal Antibody**  
**Catalog # AP70093****Specification**

---

**GK1 Polyclonal Antibody - Product Information**

Application	WB, IF
Primary Accession	<a href="#">P32189</a>
Reactivity	Human, Mouse, Rat
Host	Rabbit
Clonality	Polyclonal

**GK1 Polyclonal Antibody - Additional Information****Gene ID** 2710**Other Names**

GK; Glycerol kinase; GK; Glycerokinase; ATP:glycerol 3-phosphotransferase

**Dilution**

WB~~Western Blot: 1/500 - 1/2000. Immunofluorescence: 1/200 - 1/1000. ELISA: 1/20000. Not yet tested in other applications.

IF~~1:50~200

**Format**

Liquid in PBS containing 50% glycerol, 0.5% BSA and 0.09% (W/V) sodium azide.

**Storage Conditions**

-20°C

**GK1 Polyclonal Antibody - Protein Information****Name** GK ([HGNC:4289](#))**Function**

Kinase that plays a key role in glycerol metabolism, catalyzing its phosphorylation to produce sn-glycerol 3-phosphate. Sn- glycerol 3-phosphate is a crucial intermediate in various metabolic pathways, such as the synthesis of glycerolipids and triglycerides, glycogenesis, glycolysis and gluconeogenesis.

**Cellular Location**

Mitochondrion outer membrane; Single-pass membrane protein. Nucleus. Cytoplasm, cytosol. Note=Glycerol kinase activity is more cytosolic in some tissues. It probably represents the expression of isoforms lacking a transmembrane domain [Isoform 4]: Cytoplasm, cytosol. Note=In adult tissues, such as liver the glycerol kinase activity is more cytosolic. It probably represents the expression of this isoform which lacks a transmembrane domain

**Tissue Location**

[Isoform 2]: Widely expressed in fetal and adult tissues. [Isoform 4]: The sole isoform expressed in

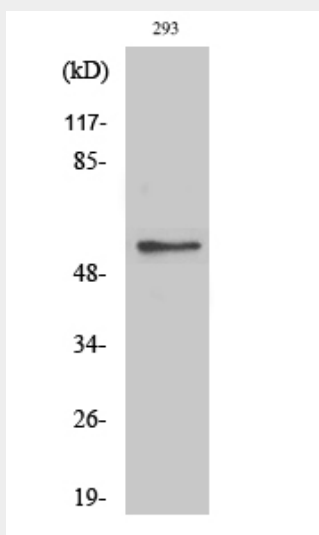
adult liver and kidney.

### GK1 Polyclonal Antibody - Protocols

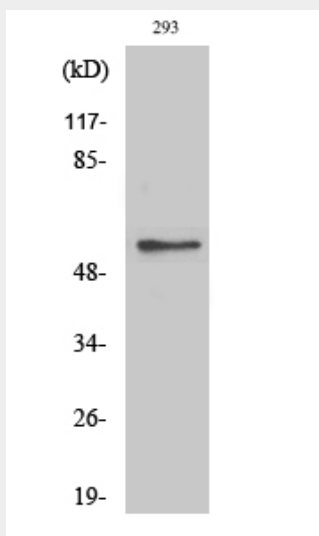
Provided below are standard protocols that you may find useful for product applications.

- [Western Blot](#)
- [Blocking Peptides](#)
- [Dot Blot](#)
- [Immunohistochemistry](#)
- [Immunofluorescence](#)
- [Immunoprecipitation](#)
- [Flow Cytometry](#)
- [Cell Culture](#)

### GK1 Polyclonal Antibody - Images



Western Blot analysis of various cells using GK1 Polyclonal Antibody diluted at 1:2000



Western Blot analysis of various cells using GK1 Polyclonal Antibody diluted at 1:2000

### **GK1 Polyclonal Antibody - Background**

Key enzyme in the regulation of glycerol uptake and metabolism.