

RIOK2 Antibody (C-term)
Purified Rabbit Polyclonal Antibody (Pab)
Catalog # AP7009b**Specification**

RIOK2 Antibody (C-term) - Product Information

Application	WB,E
Primary Accession	Q9BVS4
Other Accession	NP_060813
Reactivity	Human
Host	Rabbit
Clonality	Polyclonal
Isotype	Rabbit IgG
Calculated MW	63283
Antigen Region	401-430

RIOK2 Antibody (C-term) - Additional Information**Gene ID** 55781**Other Names**

Serine/threonine-protein kinase RIO2, RIO kinase 2, RIOK2

Target/Specificity

This RIOK2 antibody is generated from rabbits immunized with a KLH conjugated synthetic peptide between 401-430 amino acids from the C-terminal region of human RIOK2.

Dilution

WB~~1:1000

E~~Use at an assay dependent concentration.

Format

Purified polyclonal antibody supplied in PBS with 0.09% (W/V) sodium azide. This antibody is prepared by Saturated Ammonium Sulfate (SAS) precipitation followed by dialysis against PBS.

Storage

Maintain refrigerated at 2-8°C for up to 2 weeks. For long term storage store at -20°C in small aliquots to prevent freeze-thaw cycles.

Precautions

RIOK2 Antibody (C-term) is for research use only and not for use in diagnostic or therapeutic procedures.

RIOK2 Antibody (C-term) - Protein Information**Name** RIOK2 ([HGNC:18999](#))**Function** Serine/threonine-protein kinase involved in the final steps of cytoplasmic maturation of

the 40S ribosomal subunit. Involved in export of the 40S pre-ribosome particles (pre-40S) from the nucleus to the cytoplasm. Its kinase activity is required for the release of NOB1, PNO1 and LTV1 from the late pre-40S and the processing of 18S-E pre- rRNA to the mature 18S rRNA (PubMed:[19564402](#)). Regulates the timing of the metaphase-anaphase transition during mitotic progression, and its phosphorylation, most likely by PLK1, regulates this function (PubMed:[21880710](#)).

Cellular Location

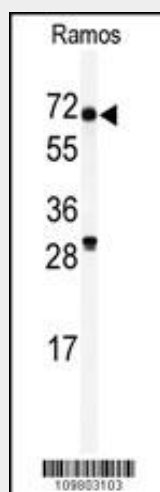
Cytoplasm. Note=Exported out of the nucleus via its NES in a XPO1-dependent manner.

RIOK2 Antibody (C-term) - Protocols

Provided below are standard protocols that you may find useful for product applications.

- [Western Blot](#)
- [Blocking Peptides](#)
- [Dot Blot](#)
- [Immunohistochemistry](#)
- [Immunofluorescence](#)
- [Immunoprecipitation](#)
- [Flow Cytometry](#)
- [Cell Culture](#)

RIOK2 Antibody (C-term) - Images



Western blot analysis of anti-RIOK2 Antibody (C-term) (Cat.#AP7009b) in Ramos cell line lysates (35ug/lane). RIOK2 (arrow) was detected using the purified Pab.

RIOK2 Antibody (C-term) - Background

RIOK2 belongs to the protein kinase superfamily; RIO-type Ser/Thr kinase family. Serine/threonine protein kinases, such as RIOK2, phosphorylate the OH group of serine or threonine (which have similar sidechains). Activity of these protein kinases can be regulated by specific events (e.g. DNA damage), as well as numerous chemical signals, including cAMP/cGMP, Diacylglycerol, and Ca²⁺/calmodulin.

RIOK2 Antibody (C-term) - References

Ota, T., et al., Nat. Genet. 36(1):40-45 (2004).